

## **Userguide of shipping instruction which results in Bill of Lading (version 1.5.3, October 2010).**

*Based on: IFTMIN MESSAGE of EDIFACT directory D97A and IFTM principles and rules : JM4/ITIGG/ 96.100/v.131 (based on D94B)*

## 1 Table of Contents

|          |  |            |
|----------|--|------------|
| <b>2</b> | <b>Introduction .....</b>  | <b>3</b>   |
| 2.1      | EDIFACT definition of IFTMIN.....  | 3          |
| 2.2      | Principles .....   | 3          |
| 2.3      | Representation of numeric values.....  | 4          |
| 2.4      | Document references .....  | 4          |
| 2.5      | Explanation of status indicators.....  | 5          |
| 2.6      | Elements relating to the printing of the Bill of Lading .....                                      | 6          |
| 2.7      | Restrictions in the length of data elements.....   | 9          |
| 2.8      | Changes to the previous version.....   | 10         |
| 2.9      | Conditions for the use of the PorthusUN/IFTMIN D.97A message in relation to SE/BILLAD 0.005.<br>15 |            |
| 2.9.1    | General remarks/restrictions.....  | 15         |
| 2.9.2    | Data in Porthus IFTMIN that are not covered in BILLAD .....  | 17         |
| 2.9.3    | Length of data fields and different formats. ....  | 18         |
| 2.10     | Userguide maintenance .....  | 20         |
| <b>3</b> | <b>MESSAGE STRUCTURE CHART AND BRANCHING DIAGRAM .....</b>   | <b>22</b>  |
| <b>4</b> | <b>Examples.....</b>   | <b>131</b> |
| 4.1      | Example 1: Levels of packaging .....   | 131        |
| 4.2      | Example 2.....   | 132        |

## 2 Introduction

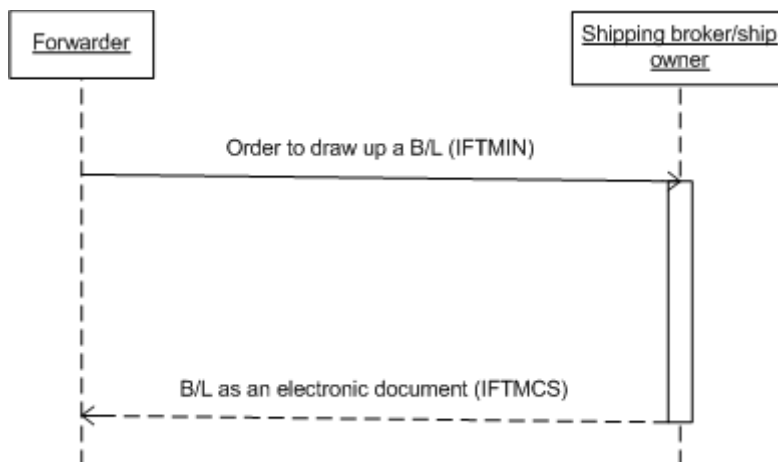
### 2.1 EDIFACT definition of IFTMIN

A message from the party issuing an instruction regarding forwarding/transport services for a consignment under conditions agreed, to the party arranging the forwarding and/or transport services.

### 2.2 Principles

#### Application of the message

Basically the IFTMIN message concerns the information transfer between forwarder and shipbroker/ship owner.



Additionally the IFTMCS message can be used as required for the communication between other participants like overseas agents, customs, shipper, banks, insurances etc.

#### Combined versus Through Transport

There is an essential difference between a combined transport and a through transport:

- In case of a combined transport the combined transport operator accepts full responsibility for the entire movement and acts as principal with respect to the shipper and other carriers.
- A through transport is a transport from one place to another in separate stages of which at least one stage is sea transport. The issuing sea-carrier accepts responsibility for the sea-carriage and acts as agent for the shipper in arranging carriage and in handling the goods to the subsequent carrier.

### Printing the B/L

This message is an instruction for a bill of lading. The bill of lading is printed out after this message is received. It is therefore recommended that all participants agree on a "layout". If the layout is one of the layouts designed by AGHA, reference can be made to them in this message (See 1.6).

## 2.3 Representation of numeric values

### Decimal sign

The representation for decimal sign is the point on the line (.). The decimal sign shall not be counted as a character when computing the maximum field length of a numeric data element. When a decimal sign is transmitted, there shall be at least one digit before and after the decimal sign.

### Triad separator

Triad separators shall not be used in an interchange (allowed: 2500000; not allowed: 2,500,000 or 2.500.000 or 2 500 000).

## 2.4 Document references

The PorthusIFTMIN message for an instruction resulting in a bill of lading is based on:

- IFTMIN MESSAGE of EDIFACT directory D97A
- IFTM\*<sup>1</sup> principles and rules : JM4/ITIGG/96.100/v.131 (based on D94B)

---

<sup>1</sup> International Forwarding & Trade Messages

This principles and rules document has been developed by the International Transport Implementation Guidelines Group (ITIGG) and covers maritime-related electronic data interchange (EDI). Specifically it provides guidance as to the recommended usage within the set of single consignment messages (IFTM\*\* set) of codes, qualifiers, data elements, composites, segments and groups of segments for international trade purposes.

The intention of the ITIGG P& R documents is to provide principles and rules which when followed will ensure consistent use of the appropriate UN/EDIFACT messages throughout the worldwide trade and transport community.

## 2.5 Explanation of status indicators

Status indicators describe the status of segments/elements in the EDIFACT framework or this MIG (= Message Implementation Guide).

Throughout this document the following status indicators are used:

| <i>Value</i> | <i>Description</i>  |
|--------------|---|
| M            | Mandatory<br>Indicates that this entity is mandatory in the message.                              |
| R            | Recommended<br>Indicates that this entity is strongly recommended.                                |
| D            | Dependant<br>Indicates that the occurrence depends on some kind of condition.                     |
| O            | Optional<br>Indicates that this entity is at the need or discretion of the sender of the message. |
| X            | Not Used<br>Indicates that the entity is not to be used in this message implementation.           |

**Statuses that appear on the left side are the statuses relevant in this manual.**

Important note for the interpretation of status indicators in the segment layout (part 2 of this manual): for the usage of a segment/segment group the status indicator in brackets determines the usage of this segment/group in this MIG (= Message Implementation Guide).

Example:

|  |
|--|
| <b>Segment: MEA Measurements</b>                                     |
| <b>Position:</b> 1360 (Trigger Segment)                              |
| <b>Group:</b> Segment Group 30 (Measurements)<br>Optional (Required) |

In this example segment group 30 is mandatory instead of optional.

## 2.6 Elements relating to the printing of the Bill of Lading

### General remark

If a blank line is to be transmitted, the following convention has been made (mostly used in free text segments, e.g. FTX and PCI): when at the beginning of the line, a dot (".") is indicated, this signifies that a blank line is transmitted: as a result a blank line has to appear on the printout B/L. This procedure should be agreed with the specific carrier.

### Several other elements which have to be considered when printing the electronic Bill of Lading message :

- 1) the value 0 of the goods item number – NOT RECOMMENDED any more as this is not supported by most carriers
- 2) the possibility of having an attached sheet in case the goods description exceeds the length of 20 times an..26
- 3) the nine layouts of the B/L
- 4) segments FTX and PCI :
  - via the header segment FTX (qualifier AAW Letter of credit information, BLC Bill of Lading clause or BLR Transport documents remarks) the forwarder can give remarks which are to be printed on the first page of the B/L: e.g. clauses and L/C requirements.

- the information given in segment FTX in GID (qualifier AAA goods description), header segment FTX (qualifier AAW, BLC or BLR) and segment PCI have to be literally taken over by the agent/carrier on the printout.
- 5) convention regarding segment CNT :
- when the qualifier value 8 is used in 6069 control qualifier the shipping agent automatically prints the word packages on the printout of the B/L.
  - when the qualifier value 11 is used in 6069 control qualifier the shipping agent automatically prints the word colli on the printout of the B/L.

### Solutions

1. The value 0 of the goods item number was introduced in several PORTHUSmessages to speed up the transmission time by giving all common elements of the different goods items under the goods item number 0. Only FTX- and PCI-segments can occur under goods item number 0. Firstly the data under goods item number 0 are to be printed and afterwards the specific characteristics of the different goods items. The data under goods item number 0 values are not repeated per goods item on the B/L printout.
2. In case the goods description (in FTX, qualifier AAA goods description) exceeds the length of 10 times an..26 an attached sheet will be needed when printing the B/L. The FTX segment (qualifier DOC documentation instructions) is included to give details on how the information has to be printed in case there is an attached sheet:
  - the data element 4441 will indicate whether there is an attached sheet Y(es) or whether there is none N(o).
  - data element 4440 (free text) will be used in case of an attached sheet and has the value "See attached sheet" in the language chosen by the freight forwarder.
3. The nine layouts B/L

PORTHUS defined nine layouts (for conventional B/L's, container B/L's and B/L's with containerised and conventional items).

The professional port associations "Antwerpse Scheepvaartvereniging" (ASV), "Vereniging der Expediteurs van Antwerpen" (VEA) and "Groepering der Nijverheidszeevaartagenten" (GAMU) agree with these proposed layouts. In the IFTMIN message, the freight forwarder can make clear to the agent/carrier via the header segment FTX with qualifier SIN (special instructions), which layout has to be taken regarding to the printout B/L (layout number 1, 2, 3, 4, 5, 6, 7, 8 or 9 in data element 4411). For container B/Ls layout number 2 is strongly recommended.

The segment FTX with qualifier SIN (special instructions) in the GID group is only to be used in case layout number 3, 4, 8 or 9 is chosen to indicate the end of the conventional items and the beginning of the containerised items.

3.1 Layout number 1 : Container B/L without using the segment SGP + on print-out 'containers'

- By means of this layout, the forwarder expresses that no links have to appear on the printout of the B/L between the goods items and the containers
- firstly, the goods items are to be given (GID groups) and secondly the container details (EQD groups)
- only one type of service may be used for the complete B/L
- in segment CNT (control total) : total number of outer packages of the consignment and total number of containers are to be indicated.
- on the print-out B/L in the field 'total number of packages / containers' only containers may appear (no packages)

3.2 Layout number 2 : Container B/L with use of segment SGP<sup>2</sup> + on print-out 'containers'

- On the printout of the B/L the link between the goods items and the containers is indicated.
- THIS LAYOUT IS STRONGLY RECOMMENDED for container B/Ls
- on the print-out B/L in the field 'total number of packages / containers' only containers may appear (no packages)

3.3 Layout number 3 : Conventional + container B/L : without SGP + on print-out 'containers' - NOT RECOMMENDED for container B/Ls

- firstly the conventional items are given (GID groups)
- a segment FTX (qualifier SIN) is included in the GID group to indicate the end of the non-containerised items
- next, the containerised items are to be given (without using segment SGP)
- on the print-out B/L in the field 'total number of packages / containers' : for the container part only containers may appear

3.4 Layout number 4 : Conventional + container B/L : with SGP + on print-out 'containers' - NOT RECOMMENDED

The same as layout number 3, but with the difference that the containerised items are to be given with use of SGP.

3.5 Layout number 5 : Conventional B/L

---

<sup>2</sup> SGP = Split goods placement. In this segment you indicate that a number of packages of a certain goods item have been put in a particular container.



This layout contains only conventional items. Used for conventional cargo and NVOCC cargo.

3.6 Layout number 6 : Container B/L without using the segment SGP + on print-out 'packages'

- by means of this layout, the forwarder expresses that no links have to appear on the printout of the B/L between the goods items and the containers
- firstly, the goods items are to be given (GID groups) and secondly the container details (EQD groups)
- only one type of service may be used for the complete B/L
- in segment CNT (control total) : total number of outer packages of the consignment and total number of containers are to be indicated.
- on the print-out B/L in the field 'total number of packages/containers' only packages may appear (no containers)

3.7 Layout number 7 : Container B/L with use of segment SGP + on print-out 'packages'

- On the printout of the B/L the link between the goods items and the containers is indicated.
- on the print-out B/L in the field 'total number of packages / containers' only packages may appear (no containers)

3.8 Layout number 8 : Conventional + container B/L : without SGP + on print-out 'packages'

- firstly the conventional items are given (GID groups)
- a segment FTX (with qualifier SIN) is included in the GID group to indicate the end of the non-containerised items
- next, the containerised items are to be given (without using segment SGP)
- on the print-out B/L in the field 'total number of packages / containers' only packages may appear for the container part

3.9 Layout number 9 : Conventional + container B/L : with SGP + on print-out 'packages'

The same as layout number 8, but with the difference that the containerised items are to be given with use of SGP.

**2.7 Restrictions in the length of data elements**

| Element                             | Length in EDIFACT | Recommended length in this manual          |
|-------------------------------------|-------------------|--|
| Shipping Marks (GID.PCI.7102)       | an..35            | an..17 (in conformance with UN Layout Key) |
| Description of goods (GID.FTX.4440) | an..70            | an..26                                     |

| Element   | Length in EDIFACT             | Recommended length in this manual   |
|---|-------------------------------|---|
| Volumes (all MEA-segments and CNT segment with qualifier 15)          | an..18 in MEA or n..18 in CNT | n..15: 9 integers and 6 decimals, explicit decimal point, no leading or trailing zero's (e.g. 2354.25)              |
| Weights<br>(all MEA-segments and CNT segment with qualifier 7 and 29) | an..18 in MEA or n..18 in CNT | n..15: 11 integers and 4 decimals, explicit decimal point, no leading or trailing zero's (e.g. 1232.325, 122563.32) |

## 2.8 Changes to the previous version

### Changes to version 1.5.2

| Page | Segment-element | Change/Remark  |
|------|-----------------|--|
| 64   | TDT/LOC         | Country code in C519/3223 and berth code in C553/3233. The change is to be in line with the other LOC segment. Remark: the berth code is not processed by most shipping agents/carriers. |

### Changes to version 1.5

| Page | Segment-element   | Change/Remark   |
|------|-------------------|---|
| 38   | FTX/DOC (heading) | The single message indicator (SMI) needs to be sent in the field 4453.  |
| 71   | NAD (MR)          | Extra NAD segment to submit a notification e-mail for compliance data like US 10+2 elements, so that these other parties can comply with government regulations |

### Changes to version 1.4

Following changes are related to the requirements of Customs Authorities in US, Canada and Brazil. Currently these changes only apply for carrier on the INTTRA portal.

Please find a summary of the changes:

1. Export to US
  2. HS Code is mandatory (PIA)
  3. Postal code is mandatory for Consignee and Main Notify (NAD/CN, NAD/N1)
  4. Optional support for "10+2" datafields: B/L Requestor may include all ten datafields required for "10+2" Importer Security Filings within their B/L instruction. INTTRA SI products allow B/L Requestors to share 10+2 data with 3<sup>rd</sup> parties via INTTRA's information sharing feature. INTTRA does not act as a 3<sup>rd</sup> party filing agent and does not submit Importer Security Filings to US Customs or other regulatory agencies:
    - Manufacturer/supplier Name and address (NAD/SU)
    - Exporter/seller Name and address (NAD/EX)
    - Goods owner/buyer Name and address (NAD/GO)
    - Ship to Name and address (NAD/ST)
    - Importer Name and address, Tax ID (NAD/IM + RFF/GN)
    - Consignee Name and address, Tax ID (NAD/CN + RFF/GN)
    - Consolidator Name and address (NAD/CS)
    - Origin of goods (TDT/LOC/198)
    - Container stuffing location (EQD/NAD/CS)
    - Place of delivery (TDT/LOC/7)
 For FROB (Freight remaining on board) the Ship to party (NAD/ST) and place of delivery (TDT/LOC7) are required.
5. Export to US and Canada
  6. Filing status ("Self" or "Carrier") and Filing Country mandatory. (Note: Optional at Header level provided default customer preference exists.) (FTX/CCI)
  7. If Filing status = Self, Self-filer code is mandatory => SCAC code (FTX/CCI)
  8. For Consolidation shipments where Carrier files cargo manifest:
    9. Filing status and Filing Country ("US" or "CA") is mandatory per Cargo. (FTX/CCI)
    10. For cargo where filing status = Self, self-filer code is mandatory (FTX/CCI)
    11. For cargo where Filing status = Carrier, Original Shipper and Ultimate Consignee parties are mandatory (GID/NAD/OS, UC)
    12. Housebill Number is mandatory per cargo item (GID/RFF/BH)
    13. Some carriers will no longer accept Standalone Housebill SIs
  14. Postal code mandatory for Consignee party when Port of Discharge is a Canadian port (NAD/CN)
15. Export to Brazil
  16. Government Reference/Tax ID mandatory for Consignee. If shipment is "to order" then Government Reference/Tax ID is mandatory for Main Notify party . (NAD/CN, NAD/N1)
  17. Country code for Consignee party is mandatory. If Consignee country code is not Brazil or shipment is "to order", then Main Notify party must be provided with a country code of Brazil. (NAD/CN, NAD/N1)
  18. NCM commodity code (up to 140 codes per cargo), Cargo Gross Weight, Cargo Gross Volume and Container Tare Weight mandatory per cargo. (GID/RFF/ABT, GID/MEA, EQD/MEA)

Table of changes related to Customs requirements (INTTRA only for the moment):

| Page | Segment-element   | Change/Remark  |
|------|-------------------|--|
| 38   | FTX/DOC (heading) | Addition of Single Message Indicator (consolidation shipments) |

|     |   |   |
|-----|---|---|
| 38  | FTX/CCI (heading)                             | Addition of self-filer information  |
| 67  | TDT/LOC                                       | Extra qualifier 198 for origin of the goods   |
| 71  | NAD   | Extra qualifiers EX, GO, ST, SU, CS and IM (US 10+2) + addition of postal code and country code next to address block               |
| 93  | GID/FTX(CCI) – in case not provided on detail | Addition of self-filer information  |
| NEW | NAD/RFF, qualifier GN                         | Tax identifier for NAD/CN or NAD/N1   |
| NEW | GID/NAD qualifier OS and UC                   | OS=original shipper, UC=ultimate consignee (consolidation and self-filing)  |
| NEW | GID/RFF qualifier ABT, BH, ED                 | ABT for NCM code Brazil, HB=House B/L (consolidation and single message indicator), ED is export declaration type (for future use). |
| NEW | EQD/MEA, qualifier T                          | Tare weight of the container (required for Brazil)  |
| NEW | EQD/NAD qualifier CS                          | CS=consolidator stuffing place  |

Other changes in version 1.5.

| Page | Segment-element | Change/Remark  |
|------|-----------------|--|
| 26   | UNH             | New value POR15 for UNH/0057 (association assigned code)   |
| 27   | BGM             | Use of new element revision number (alternative for RFF/ACW in case of replaces)                               |
| 41   | DOC             | Addition of qualifier 714 for House B/L – please consult Porthus before using as not all carriers support this |
| 47   | LOC             | Addition of field for country code   |

|     |                  |   |
|-----|------------------|---|
| 52  | DTM              | Extra qualifier 182 (L/C issue date)  |
| 61  | TDT              | Remove reference to call sign   |
| 67  | TDT/LOC          | Remove qualifier 64, 68 and 70 + addition of country code                     |
| NEW | RFF qualifier ON | Purchase order number on detail line in case of different PO's per goods item |
| NEW | EQD/MEA          | Container weight/volume   |

Following table contains the changes to the PORTHUS UN/IFTMIN D.97A message version 1.3, dd. august 2004. The "PAGE" refers to the page number in the PORTHUSUN/IFTMIN manual version 1.3.

Changes to version 1.3

| Page    | Segment-element | Change/Remark  |
|---------|-----------------|--|
| 38      | FTX             | New meaning of FTX, qualifier BLR: B/L remarks to be printed before the goods description part, on the 1st page of the B/L. New qualifier AAS: B/L remarks to be printed after the goods description part, at the end of the B/L. Qualifier AAW is marked for deletion.<br><u>Remark:</u> please use BLR and AAS only after consultation with Porthus as not all carriers are supporting this. |
| 49      | RFF             | In case qualifier ACW is used, reference must be made to the BGM/1004 reference of the original message (e.g. in case of original and 2 replace messages, reference in second replace to original message and not to the previous replace message).  |
| 102-103 | EQD             | Added element 8077 – equipment supplier code – container shipper supplied or carrier supplied (not supported in SE/BILLAD)   |

Following table contains the changes to the PORTHUSUN/IFTMIN D.97A message version 1.2, dd. march 2003. The "PAGE" refers to the page number in the PORTHUSUN/IFTMIN manual version 1.2.

| Page  | Segment-element | Change/Remark   |
|-------|-----------------|---|
| 27    | BGM             | The number of qualifiers in element 1225 is restricted to 9 (original) , 5 (replace) and 1 (cancellation).  |
|       | CTA/COM         | Added possibility to include contact details of the submitter of the B/L instruction.   |
| 29    | DTM             | This segment is no longer mandatory   |
| 30    | TSR             | The segment is mandatory.   |
| 30    | TSR.4065        | This element is used to indicate the movement type.   |
| 38    | DOC             | Added the possibility to include rated/unrated.   |
| 40    | LOC             | Added comments for the use of LOC segment - place of payment/place of issue.  |
| 43    | RFF             | Added qualifier ON (purchase order number), SI (shipper's identifying number) and LC (Letter of Credit number).   |
| 47    | CPI             | This segment is mandatory with qualifier 4 (basic freight) or 1 (all charges).  |
| 52    | TDT             | The vessel name is mandatory (element 8212) - element 8213 (IMO, call sign) is not supported by INTTRA/GTNexus.   |
| 54-55 | LOC             | The place of receipt (qualifier 88) is mandatory in case of door-pier and door-door movements. The place of delivery (qualifier 7) is mandatory in case of pier-door and door-door movements. The use of the UN/LOCODE is mandatory for qualifiers 9, 11, 7 and 88. |
| 57    | NAD             | Removed qualifiers SF and ST. If the B/L is "to order", the indication "TO ORDER" or "ORDER" can only be put in data element 3124 instead of element 3039. Added comments about the use of the segment with qualifier CG and CA.                                    |
| 64    | GID             | The use of the GID group with qualifier "0" is not recommended any more.  |

|       |              |   |
|-------|--------------|---|
| 68    | GID.TMP      | For INTTRA/GTNexus, the temperature can only be provided on container level (EQD group) - only in case of a reefer container.   |
| 69    | GID.RNG      | For INTTRA/GTNexus, the temperature can only be provided on container level (EQD group) - only in case of a reefer container  |
|       | GID.PIA      | New segment for HS code - Mandatory for INTTRA in case of destination US, Canada or Israël.   |
| 77    | GID.RFF      | This segment is not used any more   |
| 84-85 | SGP.MEA      | The measurement qualifiers have been extended with MTQ, MTR and FTQ (support of volumes).   |
| 90    | DGS.FTX      | Indication Marine Pollutant or Severe Marine Pollutant to be used with qualifier AAD.   |
|       | DGS.CTA/COM  | Added segments for emergency contact in case of dangerous goods.  |
| 93    | EQD.8155     | Container ISO code is mandatory.  |
| 98    | EQD.FTX.4441 | With qualifier AAI in element 4451 and qualifier TMP in element 4441 , this segment is used to indicate the reefer temperature or temperature range (necessary for INTTRA/GTNexus). |

General Remark: Special requirements from the carrier portals INTTRA/GTNexus have been included in this manual.

## 2.9 Conditions for the use of the PorthusUN/IFTMIN D.97A message in relation to SE/BILLAD 0.005.

Following items are made from the point of view of the IFTMIN-user to indicate the restrictions of a possible mapping to the SE/BILLAD message. In general the BILLAD message contains less data elements than the IFTMIN-message, which means that there are certain restrictions when using the IFTMIN-message in relation to BILLAD (mapping).

The "PAGE" in the following table refers to the page number in the PORTHUSUN/IFTMIN manual version 1.0.

### 2.9.1 General remarks/restrictions

| PAGE | SEGMENT IN IFTMIN | REMARKS/RESTRICTIONS   |
|------|-------------------|--|
| 71   | GID               | The information about inner and intermediate packaging is not covered in the BILLAD message in an appropriate way. We have solved this problem by putting the information in the beginning of a GDS-segment (Goods Description) within the GID-group of the BILLAD message. The actual description of the goods follows this information in the GDS-segment and is referenced in IFTMIN by the FTX segment with qualifier AAA (see *). |
| 79   | GID.FTX           | On item level, the number of free text-lines is limited to 10 times 5 lines of 26 characters (= 1300 characters). The FTX-segment (with qualifier AAA) in IFTMIN is mapped to the GDS-segment in BILLAD. In these 10 repetitions, the free text of dangerous goods is also included, if used (GID.DGS.FTX).  |
| 85   | GID.PCI           | The number of lines for "shipping marks" is restricted to 10 times 10 lines of 17 characters.  |
| 93   | GID.DGS.7106      | The digits after the decimal point (flashpoint) are not mapped.  |
| 102  | EQD               | Both ISO container codes and PORTHUScontainer codes (SSTHH) can be mapped to BILLAD. The ISO code (element 8155) will be mapped to data element 8260 and the PORTHUScode (element 8154) will be split up in size, type and height.   |

(\*) Example intermediate and inner packages (STC = "Said to Contain"):

Information in IFTMIN :

GID+2+2:PX:3::OUTER-P+100:BK:2::INTERM-P+400:SA:1::INNER-P'

FTX+AAA+++\*\*\*\*\*.\*\*\*\*\*.\*\*\*\*\*.\*\*\*\*\*.\*\*\*\*\*'



FTX+SIN+++END OF CONVENTIONAL ITEMS'  
 FTX+AAA+++Test:Test:Test:Test:Test'  
 MEA+AAE+G+KGM:0000000001900.0000'  
 PCI+24+\*\*\*\*\*'

Information in BILLAD:

GID+2+PX:OUTER-P+2'  
 MKS+\*\*\*\*\*'  
 GDS+STC 100 INTERM-P:STC 400 INNERP:\*\*\*\*\*:\*\*\*\*\*:\*\*\*\*\*:\*\*\*\*\*:\*\*\*\*\*'  
 GDS+Test:Test:Test:Test:Test'  
 WEI+GRW+19000000:KGM'  
 FTX++END OF CONVENTIONAL ITEMS'

**2.9.2 Data in Porthus IFTMIN that are not covered in BILLAD**

| PAGE | SEGMENT IN IFTMIN | ELEMENTS NOT COVERED IN SE/BILLAD  |
|------|-------------------|--|
| 31   | CTA/COM           | Contact details submitter of the B/L instruction.  |
| 33   | DTM               | The date of the B/L instructions (=time of the message). On the other hand, the mapping of the date of issue of the B/L (and the expiry date of the L/C) is possible.  |
| 43   | DOC               | The use of element 1373 (document freighted or not) is not foreseen in BILLAD.   |
| 49   | RFF               | Although qualifiers ON (purchase order number), LC (letter of credit number) and SI (shipper's identifying number) are not foreseen in BILLAD, they will be mapped, so that you can agree with the shipping agent to use these codes if necessary. |

|     |                 |   |
|-----|-----------------|---|
| 56  | TDT             | In case of pre-carriage (qualifier 10), element 8212 is the only element that is mapped to BILLAD (free text). On-carriage information cannot be mapped. Data element 8067 (mode of transport) and composite element C040 (carrier identification) are not covered in BILLAD.<br><br>In element 8213, only the call sign can be mapped to BILLAD. |
| 64  | NAD             | This segment cannot be mapped with qualifier CA (carrier). Although qualifier FW (forwarder) is not foreseen, this information will be mapped, so that you can agree with the shipping agent to use these codes if necessary.   |
| 90  | GID.SGP.MEA     | The use of volumes in the SGP group (qualifier ABJ in data element 6313).   |
| 93  | GID.DGS         | Element 8092 (hazard code version number), element 8339 (packing group – 1,2 or 3) and composite C236 (dangerous goods label).  |
| 99  | GID.DGS.CTA/COM | Dangerous goods contact information.  |
| 102 | EQD             | When using the Porthuscontainer codes (SSTHH), the height of the container cannot be mapped to BILLAD (mapping IFTMIN-BILLAD).  |
| 106 | EQD.SEL         | Data element 9302 (sealing party – free text)   |
| 107 | EQD.FTX         | Only the first line of free text (4440) is mapped. Only two EQD.FTX segments can be mapped  |

### 2.9.3 Length of data fields and different formats.

| PAGE | ELEMENT IN IFTMIN          | LENGTH IN IFTMIN | LENGTH IN BILLAD | ELEMENT IN BILLAD |
|------|----------------------------|------------------|------------------|-------------------|
| 29   | BGM.1004 (Document Number) | an..35           | an..17           | REF.1900          |

|             |  |                         |                         |                          |
|-------------|--|-------------------------|-------------------------|--------------------------|
|             |  |                         |                         |                          |
| 49          | RFF.1154 (Reference number)  | an..35                  | an..17                  | REF.1900                 |
| 51          | RFF.DTM.2380<br>(Date/Time/period)   | an..35<br>(CCYYMMDD)    | n6<br>(YYMMDD)          | DOR.LOC.<br>DTM.2871     |
| 46, 60      | LOC.3224 (Place/location<br>identification)  | an..70                  | an..35                  | LOC.3902                 |
| 56          | TDT.8028 (Voyage Number)   | an..17                  | an..8                   | PCI.8228                 |
| 58          | TDT.8212 (vessel name)   | an..35                  | an..17                  | PCI.8122                 |
| 58          | TDT.8212 (pre-carriage)  | an..35                  | an..17                  | TTD.8428                 |
| <b>PAGE</b> | <b>ELEMENT IN IFTMIN</b>   | <b>LENGTH IN IFTMIN</b> | <b>LENGTH IN BILLAD</b> | <b>ELEMENT IN BILLAD</b> |
| 58          | TDT.8213 (call sign)   | an..9                   | an5                     | PCI.8911                 |
| 61          | TDT.LOC.3222 (Related Place<br>Location one - used for<br>identification of BERTH) | an..70                  | an..17                  | BER.3906                 |
| 64          | NAD.3039 (Party id.<br>identification)   | an..35                  | an..17                  | NAD.3895                 |
| 71          | GID.1496 (Item number)   | n..5                    | n..4                    | GID.1496                 |
| 71          | GID.7224 (Number of<br>packages)   | n..8                    | n..6                    | GID.7224                 |

|        |   |        |        |  |
|--------|---|--------|--------|--|
| 71     | GID.7064 (Type of packages)   | an..35 | an..17 | GID.7064   |
| 75     | GID.RNG.6162, GID.RNG.6152 (Range Temperature)  | n..18  | an..8  | GID.TMP.<br>6904, 6906   |
| 37, 76 | MOA.5004 and GID.MOA.5004 (Monetary amount). The format should be 10 integers and 5 decimals, using an explicit decimal point. No leading or trailing zero's necessary.   | n..18  | n..15  | VLU.5848,<br>GID.VLU.5848<br><br>fixed positions,<br>implicit decimal<br>point (10<br>integers and 5<br>decimals), no<br>leading zero's  |
| 74     | GID.MEA.6314 (Measurement Value)<br><br>- for weights: explicit decimal point, 11 integers and 4 decimals<br><br>- for volumes: explicit decimal point, 9 integers and 6 decimals<br><br>No leading or trailing zero's necessary. | an..18 | an..15 | GID.WEI.<br>6908 and<br>GID.MSE 6842<br><br>fixed positions,<br>implicit decimal<br>point, no leading<br>zero's<br><br>(11 integers and<br>4 decimals<br>without a<br>decimal point) |
| 107    | EQD.FTX.4440 (Free text)  | an..70 | an..17 | EFD.INF.<br>4900   |
| 107    | EQD.FTX.4441 (Free text identification)   | an..17 | an..2  | EFD.INF.<br>4901   |

## 2.10 Userguide maintenance

This document is made and updated by Porthus.

Any remarks, questions, amendments or requested alterations to this user guide are to be addressed to:

PORTHUS  
Duwijckstraat 17  
2500 Lier  
Belgium

Telephone : +32 (0)3 800 06 00  
Fax: +32 (0)3 800 06 00  
E-mail : [info@porthus.com](mailto:info@porthus.com)  
URL : [www.porthus.com](http://www.porthus.com)

### 3 MESSAGE STRUCTURE CHART AND BRANCHING DIAGRAM

**Introduction:**

A message from the party issuing an instruction regarding forwarding/transport services for a consignment under conditions agreed, to the party arranging the forwarding and/or transport services.

**Introduction:**

A message from the party issuing an instruction regarding forwarding/transport services for a consignment under conditions agreed, to the party arranging the forwarding and/or transport services.

|          | <u>Pos. No.</u> | <u>Seg. ID</u> | <u>Name</u>                     | <u>Req. Des.</u> | <u>Max.Use</u> | <u>Group Repeat</u> | <u>Notes and Comments</u> |
|----------|-----------------|----------------|---------------------------------|------------------|----------------|---------------------|---------------------------|
| M        | 0010            | UNH            | Message Header                  | M                | 1              |                     |                           |
| M        | 0020            | BGM            | Beginning of Message            | M                | 1              |                     |                           |
|          | 0030            | CTA            | Contact Information             | C                | 1              |                     |                           |
|          | 0040            | COM            | Communication Contact           | C                | 9              |                     |                           |
|          | 0050            | DTM            | Date/Time/Period                | O                | 9              |                     |                           |
| Must Use | 0060            | TSR            | Transport Service Requirements  | O                | 9              |                     |                           |
|          | 0080            | MOA            | Monetary Amount                 | O                | 99             |                     |                           |
| M        | 0090            | FTX            | Free Text                       | M                | 99             |                     |                           |
| M        | 0100            | CNT            | Control Total                   | M                | 9              |                     |                           |
| Must Use | 0110            | DOC            | Document/Message Details        | O                | 9              |                     |                           |
| M        | 0120            |                | Segment Group 1: LOC            | M                |                | 99                  |                           |
| M        | 0130            | LOC            | Place/Location Identification   | M                | 1              |                     |                           |
| M        | 0180            |                | Segment Group 3: RFF-DTM        | M                |                | 999                 |                           |
| M        | 0190            | RFF            | Reference                       | M                | 1              |                     |                           |
|          | 0200            | DTM            | Date/Time/Period                | O                | 9              |                     |                           |
| M        | 0300            |                | Segment Group 6: CPI            | M                |                | 9                   |                           |
| M        | 0310            | CPI            | Charge Payment Instructions     | M                | 1              |                     |                           |
| M        | 0460            |                | Segment Group 8: TDT-SG9        | M                |                | 99                  |                           |
| M        | 0470            | TDT            | Details of Transport            | M                | 1              |                     |                           |
| M        | 0500            |                | Segment Group 9: LOC            | M                |                | 99                  |                           |
| M        | 0510            | LOC            | Place/Location Identification   | M                | 1              |                     |                           |
| M        | 0560            |                | Segment Group 11: NAD-SG12-SG15 | M                |                | 99                  |                           |
| M        | 0570            | NAD            | Name and Address                | M                | 1              |                     |                           |
|          | 0600            |                | Segment Group 12: CTA-COM       | O                |                | 9                   |                           |
| M        | 0610            | CTA            | Contact Information             | M                | 1              |                     |                           |
|          | 0620            | COM            | Communication Contact           | O                | 9              |                     |                           |
|          | 0730            |                | Segment Group 15: RFF           | C                |                | 9                   |                           |
| M        | 0740            | RFF            | Reference                       | M                | 1              |                     |                           |

|          |      |     |   |   |     |
|----------|------|-----|---|---|-----|
| Must Use | 0880 |     | Segment Group 18: GID-TMP-RNG-MOA-PIA-FTX-SG19-SG20-SG22-SG23-SG29-SG32 | O | 999 |
| M        | 0890 | GID | Goods Item Details  | M | 1   |
|          | 0910 | TMP | Temperature   | O | 1   |
|          | 0920 | RNG | Range Details   | O | 1   |
|          | 0950 | MOA | Monetary Amount   | O | 9   |
|          | 0960 | PIA | Additional Product Id   | O | 9   |
| M        | 0970 | FTX | Free Text   | M | 99  |
|          | 0980 |     | Segment Group 19: NAD   | C | 9   |
| M        | 0990 | NAD | Name and Address  | M | 1   |
|          | 1020 |     | Segment Group 20: MEA   | M | 99  |
| M        | 1030 | MEA | Measurements  | M | 1   |
|          | 1080 |     | Segment Group 22: RFF   | O | 9   |
| M        | 1090 | RFF | Reference   | M | 1   |
|          | 1110 |     | Segment Group 23: PCI   | O | 999 |
| Rec      | 1120 | PCI | Package Identification  | M | 1   |
|          | 1330 |     | Segment Group 29: SGP-SG30  | O | 999 |
| M        | 1340 | SGP | Split Goods Placement   | M | 1   |
| Must Use | 1350 |     | Segment Group 30: MEA   | O | 9   |
| M        | 1360 | MEA | Measurements  | M | 1   |
|          | 1470 |     | Segment Group 32: DGS-FTX-SG33  | O | 9   |
| M        | 1480 | DGS | Dangerous Goods   | M | 1   |
|          | 1490 | FTX | Free Text   | O | 99  |
|          | 1500 |     | Segment Group 33: CTA-COM   | C | 9   |
| M        | 1510 | CTA | Contact Information   | M | 1   |
|          | 1520 | COM | Communication Contact   | C | 9   |
|          | 1610 |     | Segment Group 37: EQD-TMD-MEA-SEL-FTX-SG39                              | O | 999 |
| M        | 1620 | EQD | Equipment Details   | M | 1   |
|          | 1640 | TMD | Transport Movement Details  | O | 1   |
|          | 1650 | MEA | Measurements  | C | 9   |
| Rec      | 1670 | SEL | Seal Number   | O | 99  |
|          | 1710 | FTX | Free Text   | O | 9   |
|          | 1790 |     | Segment Group 39: NAD   | C | 9   |
| M        | 1800 | NAD | Name and Address  | M | 1   |
| M        | 1880 | UNT | Message Trailer   | M | 1   |











**Segment:** **UNH** Message Header  
**Position:** 0010  
**Group:**  
**Level:** 0  
**Usage:** Mandatory  
**Max Use:** 1  
**Purpose:** A service segment starting and uniquely identifying a message. The message type code for the Instruction message is IFTMIN.  
 Note: Instruction messages conforming to this document must contain the following data in segment UNH, composite S009:  
 Data element 0065: IFTMIN  
 Data element 0052: D  
 Data element 0054: 97A  
 Data element 0051: UN

**Dependency Notes:**  
**Semantic Notes:**  
**Comments:**

**Data Element Summary**

|   | <u>Data Element</u> | <u>Component Element</u> | <u>Name</u>  | <u>Attributes</u> |
|---|---------------------|--------------------------|--|-------------------|
| M | 0062                |                          | <b>MESSAGE REFERENCE NUMBER</b><br>Unique message reference assigned by the sender.  | <b>M an..14</b>   |
| M | S009                |                          | <b>MESSAGE IDENTIFIER</b><br>Identification of the type, version etc. of the message being interchanged.   | <b>M</b>          |
| M |                     | 0065                     | <b>Message type identifier</b><br>Code identifying a type of message and assigned by its controlling agency.<br>IFTMIN Instruction message<br>A code to identify the instruction message.  | <b>M an..6</b>    |
| M |                     | 0052                     | <b>Message type version number</b><br>Version number of a message type.<br>D Draft version/UN/EDIFACT Directory<br>Message approved and issued as a draft message (Valid for directories published after March 1993 and prior to March 1997). Message approved as a standard message (Valid for directories published after March 1997). | <b>M an..3</b>    |
| M |                     | 0054                     | <b>Message type release number</b><br>Release number within the current message type version number (0052).<br>97A Release 1997 - A<br>Message approved and issued in the first 1997 release of the UNTDID (United Nations Trade Data Interchange Directory).  | <b>M an..3</b>    |
| M |                     | 0051                     | <b>Controlling agency</b><br>Code identifying the agency controlling the specification, maintenance and publication of the message type.<br>UN UN/ECE/TRADE/WP.4<br>United Nations Economic UN Economic Commission for   | <b>M an..2</b>    |

Europe (UN/ECE), Committee on the development of trade (TRADE), Working Party on facilitation of international trade procedures (WP.4).

|          |             |  |                 |
|----------|-------------|--|-----------------|
| <b>M</b> | <b>0057</b> | <b>Association assigned code</b>   | <b>M an..6</b>  |
|          |             | Code, assigned by the association responsible for the design and maintenance of the message type concerned, which further identifies the message.<br>POR15 Porthus version 1.5             |                 |
|          | <b>0068</b> | <b>COMMON ACCESS REFERENCE</b>   | <b>O an..35</b> |
|          |             | Reference serving as a key to relate all subsequent transfers of data to the same business case or file.   |                 |
|          | <b>S010</b> | <b>STATUS OF THE TRANSFER</b>  | <b>X</b>        |
|          |             | Statement that the message is one in a sequence of transfers relating to the same topic.   |                 |
|          | <b>0070</b> | <b>Sequence message transfer number</b>  | <b>X n..2</b>   |
|          |             | Number assigned by the sender indicating that the message is an addition or change of a previously sent message relating to the same topic.  |                 |
|          | <b>0073</b> | <b>First/last sequence message transfer indication</b>   | <b>X a1</b>     |
|          |             | Indication used for the first and last message in a sequence of the same type of message relating to the same topic.<br>Refer to D.97A Data Element Dictionary for acceptable code values. |                 |

**Segment:** **BGM** Beginning of Message  
**Position:** 0020  
**Group:**  
**Level:** 0  
**Usage:** Mandatory  
**Max Use:** 1  
**Purpose:** A segment to indicate the beginning of a message and to transmit identifying number and type of the message.

**Dependency Notes:**

**Semantic Notes:**

**Comments:**

**Notes:**

For replaces/deletions the whole message must be repeated.

For INTTRA & GTNexus, deletions are not foreseen (only code 9 - original and code 5 - replace).

Example: BGM+705+172345801+9'

**Data Element Summary**

|   | <u>Data Element</u> | <u>Component Element</u> | <u>Name</u>  | <u>Attributes</u> |
|---|---------------------|--------------------------|--|-------------------|
| M | C002                |                          | <b>DOCUMENT/MESSAGE NAME</b>   | M                 |
|   |                     |                          | Identification of a type of document/message by code or name. Code preferred.  |                   |
| M |                     | 1001                     | <b>Document/message name, coded</b>  | M an..3           |
|   |                     |                          | Document/message identifier expressed in code.   |                   |
|   |                     | 705                      | Bill of lading   |                   |
|   |                     |                          | Negotiable document/message which evidences a contract of carriage by sea and the taking over or loading of goods by carrier, and by which carrier undertakes to deliver goods against surrender of the document. A provision in the document that goods are to be delivered to the order of a named person, or to order, or to bearer, constitutes such an undertaking. |                   |
|   |                     | 1131                     | <b>Code list qualifier</b>   | X an..3           |
|   |                     |                          | Identification of a code list.   |                   |
|   |                     |                          | Refer to D.97A Data Element Dictionary for acceptable code values.   |                   |
|   |                     | 3055                     | <b>Code list responsible agency, coded</b>   | X an..3           |
|   |                     |                          | Code identifying the agency responsible for a code list.   |                   |
|   |                     |                          | Refer to D.97A Data Element Dictionary for acceptable code values.   |                   |
|   |                     | 1000                     | <b>Document/message name</b>   | X an..35          |
|   |                     |                          | Plain language identifier specifying the function of a document/message.   |                   |
| M | C106                |                          | <b>DOCUMENT/MESSAGE IDENTIFICATION</b>   | M                 |
|   |                     |                          | Identification of a document/message by its number and eventually its version or revision.   |                   |
| M |                     | 1004                     | <b>Document/message number</b>   | M an..35          |
|   |                     |                          | Reference number assigned to the document/message by the issuer.   |                   |
|   |                     |                          | Unique message identification number.  |                   |

If a message is to be corrected or updated, a new unique identification can be used and reference to the original message is made in the RFF segment with qualifier ACW. In case of multiple replace messages, reference must be made to the original message. An alternative for using RFF/ACW is to send in the replace message the reference of the original message in BGM/1004. A specific revision number 000001, 000002, ... can be used for each replace.

**1056**    **Version**    **X an..9**

To specify the version number or name of an object.

**1060**    **Revision number**    **O an..6**

To specify a revision number.

A specific revision number 000001, 000002, ... can be used for each update.

**M**            **1225**    **MESSAGE FUNCTION, CODED**    **M an..3**

Code indicating the function of the message.

This data element is a critical data element in this segment. It applies to all data indicated in the message.

- 1            Cancellation  
              Message cancelling a previous transmission for a given transaction.
- 5            Replace  
              Message replacing a previous message.
- 9            Original  
              Initial transmission related to a given transaction.

**4343**    **RESPONSE TYPE, CODED**    **X an..3**

Code specifying the type of acknowledgment required or transmitted.

Refer to D.97A Data Element Dictionary for acceptable code values.

**Segment:** **CTA** Contact Information  
**Position:** 0030  
**Group:**  
**Level:** 0  
**Usage:** Conditional (Optional)  
**Max Use:** 1  
**Purpose:** A segment to identify a person or department to whom communication should be directed.

**Dependency Notes:**

**Semantic Notes:**

**Comments:**

**Notes:** Contact details of the submitter of the B/L instruction.

Example: CTA+IC+:JACK COGAN'

#### Data Element Summary

|   | <u>Data Element</u> | <u>Component Element</u> | <u>Name</u>  | <u>Attributes</u> |
|---|---------------------|--------------------------|--|-------------------|
| M | 3139                |                          | <b>CONTACT FUNCTION, CODED</b><br>Code specifying the function of a contact (e.g. department or person).<br>IC Information contact<br>Department/person to contact for questions regarding transactions. | M an..3           |
|   | C056                |                          | <b>DEPARTMENT OR EMPLOYEE DETAILS</b><br>Code and/or name of a department or employee. Code preferred.   | C                 |
|   |                     | 3413                     | <b>Department or employee identification</b><br>Internal identification code.  | C an..17          |
| M |                     | 3412                     | <b>Department or employee</b><br>The department or person within an organizational entity.   | M an..35          |



**Segment:** **COM** Communication Contact  
**Position:** 0040  
**Group:**  
**Level:** 1  
**Usage:** Conditional (Optional)  
**Max Use:** 9  
**Purpose:** A segment to identify a communication number of a person or department to whom communication should be directed.

**Dependency Notes:**

**Semantic Notes:**

**Comments:**

**Notes:** Communication numbers are to be transmitted without spaces or hyphens. Telephone and fax numbers should include country codes.

**Data Element Summary**

| <b>Data Element</b> | <b>Component Element</b> | <b>Name</b>  | <b>Attributes</b> |
|---------------------|--------------------------|--|-------------------|
| M                   | C076                     | COMMUNICATION CONTACT  | M                 |
|                     |                          | Communication number of a department or employee in a specified channel.   |                   |
| M                   | 3148                     | Communication number   | M an..512         |
|                     |                          | The communication number.  |                   |
| M                   | 3155                     | Communication channel qualifier  | M an..3           |
|                     |                          | Code identifying the type of communication channel being used.   |                   |
|                     | EM                       | Electronic mail  |                   |
|                     |                          | Creating/sending/receiving of unstructured free text messages or documents using computer network, a mini-computer or an attached modem and regular telephone line or other electronic transmission media. |                   |
|                     | FX                       | Telefax  |                   |
|                     |                          | Device used for transmitting and reproducing fixed graphic material (as printing) by means of signals over telephone lines or other electronic transmission media.   |                   |
|                     | TE                       | Telephone  |                   |
|                     |                          | Voice/data transmission by telephone.  |                   |
|                     | TL                       | Telex  |                   |
|                     |                          | Transmission of text/data via telex.   |                   |

**Segment:** **DTM** Date/Time/Period  
**Position:** 0050  
**Group:**  
**Level:** 1  
**Usage:** Optional (Optional)  
**Max Use:** 9  
**Purpose:** A segment to indicate a date and time applying to the whole message, e.g., date and time of document issue.

**Dependency Notes:**

**Semantic Notes:**

**Comments:**

**Notes:**

Example: DTM+137:20030301:102'

This is the date of the message, not the B/L issue date (see RFF.DTM for the issue date of the B/L).

**Data Element Summary**

|   | <u>Data Element</u> | <u>Component Element</u> | <u>Name</u>  | <u>Attributes</u> |
|---|---------------------|--------------------------|--|-------------------|
| M | C507                |                          | DATE/TIME/PERIOD   | M                 |
|   |                     |                          | Date and/or time, or period relevant to the specified date/time/period type.               |                   |
| M |                     | 2005                     | Date/time/period qualifier   | M an..3           |
|   |                     |                          | Code giving specific meaning to a date, time or period.                                    |                   |
|   |                     | 137                      | Document/message date/time   |                   |
|   |                     |                          | (2006) Date/time when a document/message is issued.  |                   |
|   |                     |                          | This may include authentication.   |                   |
| M |                     | 2380                     | Date/time/period   | M an..35          |
|   |                     |                          | The value of a date, a date and time, a time or of a period in a specified representation. |                   |
| M |                     | 2379                     | Date/time/period format qualifier  | M an..3           |
|   |                     |                          | Specification of the representation of a date, a date and time or of a period.             |                   |
|   |                     | 102                      | CCYYMMDD   |                   |
|   |                     |                          | Calendar date: C = Century ; Y = Year ; M = Month ; D = Day.                               |                   |

**Segment:** **TSR** Transport Service Requirements  
**Position:** 0060  
**Group:**  
**Level:** 1  
**Usage:** Optional (Required)  
**Max Use:** 9  
**Purpose:** A segment to identify the contract, conditions of carriage, services, and priority requirements for the transport.

**Dependency Notes:**

**Semantic Notes:**

**Comments:**

**Notes:**

The TSR is to specify contractual requirements, whereas the TMD segment (on container level - EQD group) is to be used for operational requirements.

Values at this level are by default for the whole consignment.

Example: TSR+27+2:::2'

**Data Element Summary**

|   | <u>Data Element</u> | <u>Component Element</u> | <u>Name</u>  | <u>Attributes</u> |
|---|---------------------|--------------------------|--|-------------------|
| M | C536                |                          | <b>CONTRACT AND CARRIAGE CONDITION</b><br>To identify a contract and carriage condition.   | M                 |
| M |                     | <b>4065</b>              | <b>Contract and carriage condition, coded</b><br>Code to identify the conditions of contract and carriage.   | M an..3           |
|   |                     | 27                       | Door-to-door<br>The carrier is responsible for the intermodal carriage of cargo including both the pre-carriage and the on- carriage.  |                   |
|   |                     | 28                       | Door-to-pier<br>The carrier is responsible for the intermodal carriage of cargo including the pre-carriage, but excluding the on-carriage.                                   |                   |
|   |                     | 29                       | Pier-to-door<br>The carrier is responsible for the intermodal carriage of cargo including the on-carriage, but excluding the pre-carriage.                                   |                   |
|   |                     | 30                       | Pier-to-pier<br>The carrier of intermodal cargo is only responsible for the main carriage.   |                   |
|   |                     | <b>1131</b>              | <b>Code list qualifier</b><br>Identification of a code list.<br>Refer to D.97A Data Element Dictionary for acceptable code values.   | <b>X an..3</b>    |
|   |                     | <b>3055</b>              | <b>Code list responsible agency, coded</b><br>Code identifying the agency responsible for a code list.<br>Refer to D.97A Data Element Dictionary for acceptable code values. | <b>X an..3</b>    |
| M | C233                |                          | <b>SERVICE</b><br>To identify a service (which may constitute an additional component to a basic   | M                 |

|   |      |  |         |
|---|------|--|---------|
| M | 7273 | contract).<br><b>Service requirement, coded</b>  | M an..3 |
|   |      | Identification of a service requirement (which may constitute an additional component to a basic contract).                    |         |
|   |      | <b>ORIGIN</b>  |         |
|   |      | 2 Full loads<br>Container to be stuffed or stripped under responsibility and for account of the shipper or the consignee.      |         |
|   |      | 3 Less than full loads<br>Container to be stuffed and stripped for account and risk of the carrier.                            |         |
|   | 1131 | <b>Code list qualifier</b>   | X an..3 |
|   |      | Identification of a code list.<br>Refer to D.97A Data Element Dictionary for acceptable code values.                           |         |
|   | 3055 | <b>Code list responsible agency, coded</b>   | X an..3 |
|   |      | Code identifying the agency responsible for a code list.<br>Refer to D.97A Data Element Dictionary for acceptable code values. |         |
| M | 7273 | <b>Service requirement, coded</b>  | M an..3 |
|   |      | Identification of a service requirement (which may constitute an additional component to a basic contract).                    |         |
|   |      | <b>DESTINATION</b>   |         |
|   |      | 2 Full loads<br>Container to be stuffed or stripped under responsibility and for account of the shipper or the consignee.      |         |
|   |      | 3 Less than full loads<br>Container to be stuffed and stripped for account and risk of the carrier.                            |         |
|   | 1131 | <b>Code list qualifier</b>   | X an..3 |
|   |      | Identification of a code list.<br>Refer to D.97A Data Element Dictionary for acceptable code values.                           |         |
|   | 3055 | <b>Code list responsible agency, coded</b>   | X an..3 |
|   |      | Code identifying the agency responsible for a code list.<br>Refer to D.97A Data Element Dictionary for acceptable code values. |         |
|   | C537 | <b>TRANSPORT PRIORITY</b>  | X       |
|   |      | To indicate the priority of requested transport service.   |         |
|   | 4219 | <b>Transport priority, coded</b>   | X an..3 |
|   |      | Coded priority of requested transport service.<br>Refer to D.97A Data Element Dictionary for acceptable code values.           |         |
|   | 1131 | <b>Code list qualifier</b>   | X an..3 |
|   |      | Identification of a code list.<br>Refer to D.97A Data Element Dictionary for acceptable code values.                           |         |
|   | 3055 | <b>Code list responsible agency, coded</b>   | X an..3 |
|   |      | Code identifying the agency responsible for a code list.<br>Refer to D.97A Data Element Dictionary for acceptable code values. |         |
|   | C703 | <b>NATURE OF CARGO</b>   | X       |
|   |      | Rough classification of a type of cargo.   |         |

- 7085 Nature of cargo, coded X an..3**  
Code indicating the type of cargo as a rough classification.  
Refer to D.97A Data Element Dictionary for acceptable code values.
- 1131 Code list qualifier X an..3**  
Identification of a code list.  
Refer to D.97A Data Element Dictionary for acceptable code values.
- 3055 Code list responsible agency, coded X an..3**  
Code identifying the agency responsible for a code list.  
Refer to D.97A Data Element Dictionary for acceptable code values.

**Segment:** **MOA** Monetary Amount  
**Position:** 0080  
**Group:**  
**Level:** 1  
**Usage:** Optional (Optional)  
**Max Use:** 99  
**Purpose:** A segment to indicate a monetary value for entire consignment, e.g. insured value, invoice amount, disbursements, etc.

**Dependency Notes:**

**Semantic Notes:**

**Comments:**

**Notes:**

Example: MOA+44:200000:EUR'

#### Data Element Summary

| Data Element | Component Element | Data Element Summary   |                |
|--------------|-------------------|--|----------------|
|              |                   | Name   | Attributes     |
| M            | C516              | <b>MONETARY AMOUNT</b><br>Amount of goods or services stated as a monetary amount in a specified currency.   | <b>M</b>       |
| M            | 5025              | <b>Monetary amount type qualifier</b><br>Indication of type of amount.   | <b>M an..3</b> |
|              | 44                | Declared value for carriage<br>(5036) Value, declared by the shipper or his agent solely for the purpose of varying the carrier's level of liability from that provided in the contract of carriage, in case of loss or damage to goods or delayed delivery. |                |
| M            | 5004              | <b>Monetary amount</b><br>Number of monetary units.<br>The recommended format is I10.D5 (10 integers, 5 decimals) using an explicit decimal point. No leading or trailing zeroes are necessary (e.g. 122332.235 or 12565).                                   | <b>M n..18</b> |
| M            | 6345              | <b>Currency, coded</b><br>Identification of the name or symbol of the monetary unit involved in the transaction.   | <b>M an..3</b> |
|              | 6343              | <b>Currency qualifier</b><br>Code giving specific meaning to data element 6345 Currency.<br>Refer to D.97A Data Element Dictionary for acceptable code values.   | <b>X an..3</b> |
|              | 4405              | <b>Status, coded</b><br>Provides information regarding a status.<br>Refer to D.97A Data Element Dictionary for acceptable code values.   | <b>X an..3</b> |

**Segment:** **FTX** Free Text  
**Position:** 0090  
**Group:**  
**Level:** 1  
**Usage:** Mandatory  
**Max Use:** 99  
**Purpose:** A segment to specify free form or processable supplementary information, such as status of transport, remarks to be printed on the transport documents (where required), consignment remarks, insurance instructions or any other additional information.

**Dependency Notes:**

**Semantic Notes:**

**Comments:**

**Notes:**

Depending on the code used in data element 4451, different data elements are used later on.

If data element 4451 equals BLC, BLR and AAS the information given with these qualifiers has to be printed on the Bill of Lading. Please only use BLR and AAS after consulting Porthus, as not all carriers support this. The BLC is supported by all carriers.

AAW is not recommended any more.

If data element 4451 equals AAI, the information is NOT printed on the Bill of Lading (instructions to the carrier).

The qualifier CCI is not printed either, but used for Customs Clearance Instructions.

This segment is mandatory with qualifier SIN. If data element 4451 equals SIN, data element 4441 indicates the layout to be used (see 1.6 of this manual). For container B/Ls, layout 2 or 7 is STRONGLY RECOMMENDED - mandatory for INTTRA/GTNexus.

The segment with qualifier DOC is mandatory for mapping to BILLAD. If data element 4451 equals 'DOC' and data element 4441 has the value 'Y', there is an attached sheet. Data element 4440 can contain the terms 'see attached sheet' or similar.

The DOC segment is also used to indicate the "Single Message Indicator", which means that this is a consolidation shipment where details of house B/Ls and filing information are sent on GID detail level (only INTTRA).

Qualifiers SIN and DOC are not supported by all shipping agents/carriers.

Example: FTX+DOC++Y+SEE ATTACHMENT'  
FTX+BLC+++SHIPPED ON BOARD'

Extra information US/Canada requirements for qualifier CCI (only INTTRA):

For export to US and Canada:

When Port of Discharge is a US or Canadian port, Manifest Filer Status (MFS) and Manifest Filing Country are mandatory at the Header level:

Example:

FTX+CCI++MFS+5:US

or  
FTX+CCI++MFS+1:US:SCAC  
If Manifest Filer Status is Self (1), then Manifest Filer Identification C108, 4440(3) is mandatory.

FROB (Freight Remaining On Board) Cargo through US or Canada:

- a. For FROB cargo through the US, eg., Antwerp -> US -> Santos, it is recommended that customers provide Filer Status (Self or Carrier) for Manifest Filing Country US
- b. For FROB cargo through Canada, eg., Antwerp-> Montreal -> New York, it is recommended that customers provide Filer Status (Self or Carrier) for Manifest Filing Country CA (Canada).
- c. Filer status should NOT be provided for FROB cargo NOT involving US or CA

**Data Element Summary**

| <b>Data Element</b> | <b>Component Element</b> | <b>Name</b>                             | <b>Attributes</b> |
|---------------------|--------------------------|---|-------------------|
| M                   | 4451                     | <b>TEXT SUBJECT QUALIFIER</b>           | <b>M an..3</b>    |
|                     |                          | Code specifying subject of a free text. |                   |
|                     |                          | AAI General information                 |                   |
|                     |                          | AAS Bill of lading remarks              |                   |
|                     |                          | AAW Letter of credit information        |                   |
|                     |                          | BLC Bill of lading clause               |                   |
|                     |                          | BLR Transport document remarks          |                   |
|                     |                          | CCI Customs clearance instructions      |                   |
|                     |                          | DOC Documentation instructions          |                   |
|                     |                          | SIN Special instructions                |                   |



|          |             |  |                 |
|----------|-------------|--|-----------------|
|          | <b>4453</b> | <b>TEXT FUNCTION, CODED</b>  | <b>O an..3</b>  |
|          |             | Code specifying how to handle the text.  |                 |
|          |             | In case of qualifier DOC the value SMI is added for the "Single Message Indicator" (only INTTRA).  |                 |
|          | <b>C107</b> | <b>TEXT REFERENCE</b>  | <b>O</b>        |
|          |             | Coded reference to a standard text and its source.   |                 |
| <b>M</b> | <b>4441</b> | <b>Free text identification</b>  | <b>M an..17</b> |
|          |             | Free text in coded form.   |                 |
|          |             | <b>Business Rules:</b>   |                 |
|          |             | Variable Name:4451   |                 |
|          |             | If the text subject qualifier is DOC values are Y and N.   |                 |
|          |             | The value Y means that the goods description needs to be fully printed on an attached sheet. Most carriers/shipping agents are not processing this selement anymore. |                 |
|          |             | The values 1 to 10 are used with qualifier SIN.  |                 |
|          |             | The value MFS (Manifest Filer Status) is used with qualifier CCI.  |                 |
|          |             | 1 Container B/L without SGP, print total containers  |                 |
|          |             | 2 Container B/L with SGP, print total containers   |                 |
|          |             | 3 Conventional + container B/L without SGP, print total containers   |                 |
|          |             | 4 Conventional + container B/L with SGP, print total container   |                 |
|          |             | 5 Conventional B/L   |                 |
|          |             | 6 Container B/L without SGP, print total packages  |                 |
|          |             | 7 Container B/L with SGP, print total packages   |                 |
|          |             | 8 Conventional + container B/L without SGP, print total packages   |                 |
|          |             | 9 Conventional + container B/L with SGP, print total packages  |                 |
|          |             | MFS Manifest Filer Status  |                 |
|          |             | N no attached sheet  |                 |
|          |             | Y attached sheet   |                 |
|          | <b>1131</b> | <b>Code list qualifier</b>   | <b>O an..3</b>  |
|          |             | Identification of a code list.   |                 |
|          |             | Refer to D.97A Data Element Dictionary for acceptable code values.   |                 |
|          | <b>3055</b> | <b>Code list responsible agency, coded</b>   | <b>O an..3</b>  |
|          |             | Code identifying the agency responsible for a code list.   |                 |
|          |             | Refer to D.97A Data Element Dictionary for acceptable code values.   |                 |
|          | <b>C108</b> | <b>TEXT LITERAL</b>  | <b>O</b>        |
|          |             | Free text; one to five lines.  |                 |
| <b>M</b> | <b>4440</b> | <b>Free text</b>   | <b>M an..70</b> |
|          |             | Free text field available to the message sender for information.   |                 |
|          |             | In case of qualifier CCI the values are:   |                 |
|          |             | 1: Self-filing, meaning that the forwarder or shipper does the manifest filing.  |                 |

5: Carrier manifest filing

|             |  |
|-------------|--|
| <b>4440</b> | <p><b>Free text</b> <span style="float: right;"><b>O an..70</b></span></p> <p>Free text field available to the message sender for information.</p> <p>In case of qualifier CCI: manifest filing country (ISO 2-character country code).</p> <p>Mandatory in case manifest filing status is provided.</p> |
| <b>4440</b> | <p><b>Free text</b> <span style="float: right;"><b>O an..70</b></span></p> <p>Free text field available to the message sender for information.</p> <p>In case of qualifier CCI: manifest filer identification, more specially the SCAC code, only in case of self-filing code 1 in element 4440#1.</p>   |
| <b>4440</b> | <p><b>Free text</b> <span style="float: right;"><b>O an..70</b></span></p> <p>Free text field available to the message sender for information.</p>   |
| <b>4440</b> | <p><b>Free text</b> <span style="float: right;"><b>O an..70</b></span></p> <p>Free text field available to the message sender for information.</p>   |
| <b>3453</b> | <p><b>LANGUAGE, CODED</b> <span style="float: right;"><b>X an..3</b></span></p> <p>Code of language (ISO 639-1988).</p>  |

**Segment:** **CNT** Control Total  
**Position:** 0100  
**Group:**  
**Level:** 1  
**Usage:** Mandatory  
**Max Use:** 9  
**Purpose:** A segment to specify totals for a consignment.

**Dependency Notes:**

**Semantic Notes:**

**Comments:**

**Notes:**

Where the CNT is used to indicate a number of packages, the definition of package will depend on the usage of the GID segment agreed between the parties. The segment with qualifier 11 (total number of packages) indicates the outer packaging, and 8 (total pieces) the inner packaging.

The segment is mandatory for the total gross weight (qualifier 7 in data element 6069).

Example: CNT+11:800'

#### Data Element Summary

|   | <u>Data Element</u> | <u>Component Element</u> | <u>Name</u>  | <u>Attributes</u> |
|---|---------------------|--------------------------|--|-------------------|
| M | C270                |                          | <b>CONTROL</b>   | <b>M</b>          |
|   |                     |                          | Control total for checking integrity of a message or part of a message.  |                   |
| M |                     | <b>6069</b>              | <b>Control qualifier</b>   | <b>M an..3</b>    |
|   |                     |                          | Determines the source data elements in the message which forms the basis for 6066 Control value.   |                   |
|   |                     |                          | The segment with qualifier 11 (total number of packages) indicate the outer packaging, and 8 (total pieces) the inner packaging.   |                   |
|   |                     |                          | 7 Total gross weight   |                   |
|   |                     |                          | Code to indicate total gross weight of a consignment.  |                   |
|   |                     |                          | 8 Total pieces   |                   |
|   |                     |                          | 11 Total number of packages  |                   |
|   |                     |                          | [7370] Total number of packages of the entire consignment.   |                   |
|   |                     |                          | 15 Total consignment, cube   |                   |
|   |                     |                          | The total cube of consignment.   |                   |
|   |                     |                          | 16 Total number of equipment   |                   |
|   |                     |                          | Total number of equipment mentioned in the message.  |                   |
|   |                     |                          | 29 Total net weight of consignment   |                   |
|   |                     |                          | A code to indicate the total net weight of a consignment.  |                   |
| M |                     | <b>6066</b>              | <b>Control value</b>   | <b>M n..18</b>    |
|   |                     |                          | Value obtained from summing the values specified by the Control Qualifier throughout the message (Hash total).   |                   |
|   |                     |                          | For qualifier 15 (volume) in data element 6069 the recommended format is I9.D6 (9 integers, 6 decimals) using an explicit decimal point. No leading or trailing zeroes are required (e.g. 123.235 , 12565.356854). |                   |
|   |                     |                          | For qualifier 7 and 29 the format is I11.D4 (11 integers, 4 decimals) using an   |                   |

explicit decimal point. No leading or trailing zeroes are required (e.g. 123.235 , 12565.3568).

|             |  |                |
|-------------|--|----------------|
| <b>6411</b> | <b>Measure unit qualifier</b>  | <b>O an..3</b> |
|             | Indication of the unit of measurement in which weight (mass), capacity, length, area, volume or other quantity is expressed. |                |
|             | KGM  | Kilograms      |
|             | MTQ  | Cubic metres   |

**Segment:** **DOC** Document/Message Details  
**Position:** 0110  
**Group:**  
**Level:** 1  
**Usage:** Optional (Required)  
**Max Use:** 9  
**Purpose:** A segment to indicate the number of document copies required (such as the number of ocean Bill of Lading copies needed by the customer).

**Dependency Notes:**

**Semantic Notes:**

**Comments:**

**Notes:** Example: DOC+705+++10+2'

**Data Element Summary**

|   | <u>Data Element</u> | <u>Component Element</u> | <u>Name</u>  | <u>Attributes</u> |
|---|---------------------|--------------------------|--|-------------------|
| M | C002                |                          | <b>DOCUMENT/MESSAGE NAME</b><br>Identification of a type of document/message by code or name. Code preferred.  | <b>M</b>          |
| M |                     | <b>1001</b>              | <b>Document/message name, coded</b><br>Document/message identifier expressed in code.<br>Sea waybills can be indicated by using qualifier 710 or ESW.<br><br>Following qualifiers are recommended:<br>- 705 in case of original B/L<br>- 710 in case of sea waybill<br><br>Qualifier 714 is used to send a house B/L to the carrier/shipping agent (to be agreed with the carrier). In this case the other qualifiers don't need to be sent, there are also no originals and copies.<br><br>For example 2 house B/Ls on 1 master B/L will generate 3 B/L messages: 2 house B/L messages (including DOC+714) and 1 master B/L message (including DOC+705 or DOC+710). | <b>M an..3</b>    |
|   |                     | 705                      | Bill of lading<br>Negotiable document/message which evidences a contract of carriage by sea and the taking over or loading of goods by carrier, and by which carrier undertakes to deliver goods against surrender of the document. A provision in the document that goods are to be delivered to the order of a named person, or to order, or to bearer, constitutes such an undertaking.   |                   |
|   |                     | 710                      | Sea waybill<br>Non-negotiable document which evidences a contract for the carriage of goods by sea and the taking over of the goods by the carrier, and by which the carrier undertakes to deliver the goods to the consignee named in the document.   |                   |
|   |                     | 714                      | House bill of lading   |                   |

|             |             |   |                 |
|-------------|-------------|---|-----------------|
|             |             | The bill of lading issued not by the carrier but by the freight forwarder/consolidator known by the carrier.  |                 |
|             | 761         | Through bill of lading  |                 |
|             |             | Bill of lading which evidences a contract of carriage from one place to another in separate stages of which at least one stage is a sea transit, and by which the issuing carrier accepts responsibility for the carriage as set forth in the through bill of lading. |                 |
|             | 766         | Combined transport bill of lading/multimodal bill of lading   |                 |
|             |             | Document which evidences a multimodal transport contract, the taking in charge of the goods by the multimodal transport operator, and an undertaking by him to deliver the goods in accordance with the terms of the contract.  |                 |
|             | ESW         | Express Sea Waybill   |                 |
|             | ETB         | Express Through Bill of Lading  |                 |
|             | LBL         | Liner Bill of Lading  |                 |
|             | <b>1131</b> | <b>Code list qualifier</b>  | <b>X an..3</b>  |
|             |             | Identification of a code list.  |                 |
|             |             | Refer to D.97A Data Element Dictionary for acceptable code values.  |                 |
|             | <b>3055</b> | <b>Code list responsible agency, coded</b>  | <b>X an..3</b>  |
|             |             | Code identifying the agency responsible for a code list.  |                 |
|             |             | Refer to D.97A Data Element Dictionary for acceptable code values.  |                 |
|             | <b>1000</b> | <b>Document/message name</b>  | <b>O an..35</b> |
|             |             | Plain language identifier specifying the function of a document/message.  |                 |
|             |             | Only used in case of DOC+714 to send the house B/L number.  |                 |
| <b>C503</b> |             | <b>DOCUMENT/MESSAGE DETAILS</b>   | <b>O</b>        |
|             |             | Identification of document/message by number, status, source and/or language.   |                 |
|             | <b>1004</b> | <b>Document/message number</b>  | <b>X an..35</b> |
|             |             | Reference number assigned to the document/message by the issuer.  |                 |
|             | <b>1373</b> | <b>Document/message status, coded</b>   | <b>O an..3</b>  |
|             |             | To identify the status of a document/message.   |                 |
|             |             | The indication freighted means that the freight charges are included on the Bill of lading.   |                 |
|             |             | Not foreseen in SE/BILLAD and not allowed for DOC qualifier 714 (house B/L).  |                 |
|             |             | 26 Document not freighted   |                 |
|             |             | 27 Document freighted   |                 |
|             | <b>1366</b> | <b>Document/message source</b>  | <b>X an..35</b> |
|             |             | Indication of the source from which the printed information is to be or has been obtained.  |                 |
|             | <b>3453</b> | <b>Language, coded</b>  | <b>X an..3</b>  |
|             |             | Code of language (ISO 639-1988).  |                 |
| <b>3153</b> |             | <b>COMMUNICATION CHANNEL IDENTIFIER, CODED</b>  | <b>X an..3</b>  |

|             |   |
|-------------|---|
|             | Code identifying the type of communication channel being used.<br>Refer to D.97A Data Element Dictionary for acceptable code values.  |
| <b>1220</b> | <b>NUMBER OF COPIES OF DOCUMENT REQUIRED O n..2</b><br>Number of originals or copies of a document stipulated or referred to as being required.   |
| <b>1218</b> | <b>NUMBER OF ORIGINALS OF DOCUMENT O n..2<br/>REQUIRED</b><br>Specification of the number of originals of a stipulated document that are required.<br>Mandatory for all qualifiers except for 714 (house B/L).<br>The value is 0 in case of sea waybills.<br>Not allowed for DOC qualifier 714 (house B/L). |

**Group:** **LOC** Segment Group 1: Place/Location Identification  
**Position:** 0120  
**Group:**  
**Level:** 1  
**Usage:** Mandatory  
**Max Use:** 99  
**Purpose:** A group of segments to specify locations and related date(s)/time(s) which apply to the entire message, e.g. place of transshipment.

**Segment Summary**

|   | <u>Pos. No.</u> | <u>Seg. ID</u> | <u>Name</u>                   | <u>Req. Des.</u> | <u>Max. Use</u> | <u>Group: Repeat</u> |
|---|-----------------|----------------|-------------------------------|------------------|-----------------|----------------------|
| M | 0130            | LOC            | Place/Location Identification | M                | 1               |                      |



**Segment:** **LOC** Place/Location Identification  
**Position:** 0130 (Trigger Segment)  
**Group:** Segment Group 1 (Place/Location Identification) Mandatory  
**Level:** 1  
**Usage:** Mandatory  
**Max Use:** 1  
**Purpose:** A segment to identify a location applying to the entire message.

**Dependency Notes:**

**Semantic Notes:**

**Comments:**

**Notes:**

This segment is required with qualifier 57 ("place of payment"). Qualifier 91 is mandatory for INTTRA/GTNexus (routing purposes), and recommended in case of an original Bill of Lading.

This is the place of payment that relates to basic freight or all charges in the CPI segment.

It is recommended to use both UN/LOCODES (element 3225) and locations descriptions (element 3224). The location in words is to be literally taken over on the Bill of lading.

Example: LOC+57+BEANR:139:6:ANTWERPEN'

**Data Element Summary**

|   | <u>Data Element</u> | <u>Component Element</u> | <u>Name</u>  | <u>Attributes</u> |
|---|---------------------|--------------------------|--|-------------------|
| M | 3227                |                          | <b>PLACE/LOCATION QUALIFIER</b><br>Code identifying the function of a location.<br>57 Place of payment<br>91 Name of the location at which freight and charges for main transport are payable.<br>Place of document issue<br>The place or location where a document is issued. | <b>M an..3</b>    |
| M | C517                |                          | <b>LOCATION IDENTIFICATION</b><br>Identification of a location by code or name.  | <b>M</b>          |
|   | 3225                |                          | <b>Place/location identification</b><br>Identification of the name of place/location, other than 3164 City name.<br>It is recommended to use UN/LOCODES.   | <b>O an..25</b>   |
|   | 1131                |                          | <b>Code list qualifier</b><br>Identification of a code list.<br>139 Port<br>A location having facilities for means of transport to load or discharge cargo.  | <b>O an..3</b>    |
|   | 3055                |                          | <b>Code list responsible agency, coded</b><br>Code identifying the agency responsible for a code list.<br>6 UN/ECE (United Nations - Economic Commission for Europe)   | <b>O an..3</b>    |
|   | 3224                |                          | <b>Place/location</b><br>Name of place/location, other than 3164 City name.  | <b>O an..70</b>   |

|          |             |  |                 |
|----------|-------------|--|-----------------|
|          | <b>C519</b> | <b>RELATED LOCATION ONE IDENTIFICATION</b>   | <b>O</b>        |
|          |             | Identification the first related location by code or name.   |                 |
| <b>M</b> | <b>3223</b> | <b>Related place/location one identification</b>   | <b>M an..25</b> |
|          |             | Specification of the first related place/location by code.<br>ISO 2-character country code.                                    |                 |
|          | <b>1131</b> | <b>Code list qualifier</b>   | <b>X an..3</b>  |
|          |             | Identification of a code list.<br>Refer to D.97A Data Element Dictionary for acceptable code values.                           |                 |
|          | <b>3055</b> | <b>Code list responsible agency, coded</b>   | <b>X an..3</b>  |
|          |             | Code identifying the agency responsible for a code list.<br>Refer to D.97A Data Element Dictionary for acceptable code values. |                 |
|          | <b>3222</b> | <b>Related place/location one</b>  | <b>X an..70</b> |
|          |             | Specification of the first related place/location by name.   |                 |
|          | <b>C553</b> | <b>RELATED LOCATION TWO IDENTIFICATION</b>   | <b>X</b>        |
|          |             | Identification of second related location by code or name.   |                 |
|          | <b>3233</b> | <b>Related place/location two identification</b>   | <b>X an..25</b> |
|          |             | Specification of a second related place/location by code.  |                 |
|          | <b>1131</b> | <b>Code list qualifier</b>   | <b>X an..3</b>  |
|          |             | Identification of a code list.<br>Refer to D.97A Data Element Dictionary for acceptable code values.                           |                 |
|          | <b>3055</b> | <b>Code list responsible agency, coded</b>   | <b>X an..3</b>  |
|          |             | Code identifying the agency responsible for a code list.<br>Refer to D.97A Data Element Dictionary for acceptable code values. |                 |
|          | <b>3232</b> | <b>Related place/location two</b>  | <b>X an..70</b> |
|          |             | Specification of a second related place/location by name.  |                 |
|          | <b>5479</b> | <b>RELATION, CODED</b>   | <b>X an..3</b>  |
|          |             | To specify the relationship between two or more items.   |                 |

**Group:** **RFF** Segment Group 3: Reference  
**Position:** 0180  
**Group:**  
**Level:** 1  
**Usage:** Mandatory  
**Max Use:** 999  
**Purpose:** A group of segments containing a reference and constants which apply to the entire message.

**Segment Summary**

|   | <b>Pos.</b> | <b>Seg.</b> |                  | <b>Req.</b> | <b>Max.</b> | <b>Group:</b> |
|---|-------------|-------------|------------------|-------------|-------------|---------------|
|   | <b>No.</b>  | <b>ID</b>   | <b>Name</b>      | <b>Des.</b> | <b>Use</b>  | <b>Repeat</b> |
| M | 0190        | RFF         | Reference        | M           | 1           |               |
|   | 0200        | DTM         | Date/Time/Period | O           | 9           |               |

**Segment:** **RFF** Reference  
**Position:** 0190 (Trigger Segment)  
**Group:** Segment Group 3 (Reference) Mandatory  
**Level:** 1  
**Usage:** Mandatory  
**Max Use:** 1  
**Purpose:** A segment to express a reference which applies to the entire message such as: the document/message number that is to be updated by this very message (according to data element 1225 Message Function, Coded in segment BGM), booking reference, order number, insurance contract, etc.

**Dependency Notes:**  
**Semantic Notes:**  
**Comments:**  
**Notes:**

This segment is mandatory with qualifier FF (element 1153).

The segment with qualifier BN (booking reference - 1153) is mandatory for container B/Ls and for NVOCC house B/Ls.

Example: RFF+FF:EXP1245'

**Data Element Summary**

|   | <u>Data Element</u> | <u>Component Element</u> | <u>Name</u>  | <u>Attributes</u> |
|---|---------------------|--------------------------|--|-------------------|
| M | C506                |                          | <b>REFERENCE</b><br>Identification of a reference.   | M                 |
| M |                     | 1153                     | <b>Reference qualifier</b><br>Code giving specific meaning to a reference segment or a reference number.<br>Code ACW, reference number to previous message, is used to refer to the unique message reference number (data element 1004 of BGM) of the original message, there must always be a link to the original message in case of multiple replace messages.<br>Code BN, booking reference number, can be used several times, since reference can be made to multiple bookings. | M an..3           |
|   |                     | ACW                      | Reference number to previous message<br>Reference number assigned to the message which was previously issued (e.g. in the case of a cancellation, the primary reference of the message to be cancelled will be quoted in this element).  |                   |
|   |                     | BM                       | Bill of lading number<br>Reference number assigned to a bill of lading, see: 1001 = 705.   |                   |
|   |                     | BN                       | Booking reference number<br>[1016] Reference number assigned by the carrier or his agent when cargo space is reserved prior to loading.<br>Strongly recommended - mandatory for INTTRA/GTNexus.  |                   |
|   |                     | CT                       | Contract number<br>Reference number of a contract concluded between parties.   |                   |

|    |  |
|----|--|
| FF | Freight forwarder's reference number<br>[1460] Reference number assigned to the consignment by the freight forwarder.                          |
| GN | Government reference number<br>Description to be provided.<br>Government reference number - tax ID or Federal Maritime Commission (FMC) number |
| LC | Letter of credit number<br>Reference number identifying the letter of credit document.<br>Qualifier not foreseen in SE/BILLAD.                 |
| ON | Order number (purchase)<br>[1022] Reference number assigned by the buyer to an order.<br>Qualifier not foreseen in SE/BILLAD.                  |
| SI | SID (Shipper's identifying number for shipment)<br>Description to be provided.<br>Qualifier not foreseen in SE/BILLAD.                         |

|   |   |                 |
|---|---|-----------------|
| M | <b>1154 Reference number</b>  | <b>M an..35</b> |
|   | Identification number the nature and function of which can be qualified by an entry in data element 1153 Reference qualifier. |                 |
|   | <b>1156 Line number</b>   | <b>X an..6</b>  |
|   | Number of the line in the document/message referenced in 1154 Reference number.   |                 |
|   | <b>4000 Reference version number</b>  | <b>X an..35</b> |
|   | To uniquely identify a reference by its revision number.  |                 |

**Segment:** **DTM** Date/Time/Period  
**Position:** 0200  
**Group:** Segment Group 3 (Reference) Mandatory  
**Level:** 2  
**Usage:** Optional (Optional)  
**Max Use:** 9  
**Purpose:** A segment to indicate date and time relating to the reference.

**Dependency Notes:**

**Semantic Notes:**

**Comments:**

**Notes:** This segment will be triggered by the RFF-segment with qualifier FF in data element 1153.

Example: DTM+95:19980214:102'

**Data Element Summary**

| <u>Data Element</u> | <u>Component Element</u> | <u>Name</u>   | <u>Attributes</u> |
|---------------------|--------------------------|---|-------------------|
| M                   | C507                     | <b>DATE/TIME/PERIOD</b><br>Date and/or time, or period relevant to the specified date/time/period type.                                 | M                 |
| M                   | 2005                     | <b>Date/time/period qualifier</b><br>Code giving specific meaning to a date, time or period.  | M an..3           |
|                     |                          | 95 Bill of lading date<br>Date as specified on the bill of lading.  |                   |
|                     |                          | 123 Documentary credit expiry date/time<br>The latest date/time for presentation of the documents to the bank where the credit expires. |                   |
|                     |                          | 182 Issue date<br>Date when a document/message has been or will be issued.<br>L/C issue date.   |                   |
| M                   | 2380                     | <b>Date/time/period</b><br>The value of a date, a date and time, a time or of a period in a specified representation.                   | M an..35          |
| M                   | 2379                     | <b>Date/time/period format qualifier</b><br>Specification of the representation of a date, a date and time or of a period.              | M an..3           |
|                     |                          | 102 CCYYMMDD<br>Calendar date: C = Century ; Y = Year ; M = Month ; D = Day.  |                   |

**Group:** **CPI** Segment Group 6: Charge Payment Instructions  
**Position:** 0300  
**Group:**  
**Level:** 1  
**Usage:** Mandatory  
**Max Use:** 9  
**Purpose:** A group of segments to indicate charge methodology which applies to the entire message.

**Segment Summary**

|   | <u>Pos. No.</u> | <u>Seg. ID</u> | <u>Name</u>                 | <u>Req. Des.</u> | <u>Max. Use</u> | <u>Group: Repeat</u> |
|---|-----------------|----------------|-----------------------------|------------------|-----------------|----------------------|
| M | 0310            | CPI            | Charge Payment Instructions | M                | 1               |                      |

**Segment:** **CPI Charge Payment Instructions**  
**Position:** 0310 (Trigger Segment)  
**Group:** Segment Group 6 (Charge Payment Instructions) Mandatory  
**Level:** 1  
**Usage:** Mandatory  
**Max Use:** 1  
**Purpose:** A segment to indicate default charge methodology.

**Dependency Notes:**

**Semantic Notes:**

**Comments:**

**Notes:**

This segment is mandatory for basic freight (code 4) or all charges (code 1).  
 If all charges is used, no other CPI segments should be used.

The place of payment is indicated in the LOC segment - qualifier 57.  
 Only the place of payment relating to basic freight or all charges can be included.

Example: CPI+4++P'

**Data Element Summary**

|   | <u>Data Element</u> | <u>Component Element</u> | <u>Name</u>  | <u>Attributes</u> |
|---|---------------------|--------------------------|--|-------------------|
| M | C229                |                          | <b>CHARGE CATEGORY</b>   | M                 |
|   |                     |                          | Identification of a category or a zone of charges.   |                   |
| M |                     | 5237                     | <b>Charge category, coded</b>  | M an..3           |
|   |                     |                          | To indicate the category or zone of charges.   |                   |
|   |                     | 1                        | All charges  |                   |
|   |                     |                          | All amounts calculated by the carrier in accordance with tariffs or in case of special events during the voyage (e.g. Rail - freights costs - additional costs). |                   |
|   |                     | 4                        | Basic freight  |                   |
|   |                     |                          | The basic freight payable on the cargo as per tariff.  |                   |
|   |                     | 5                        | Destination haulage charges  |                   |
|   |                     | 7                        | Destination port charges   |                   |
|   |                     |                          | Charges payable at the port of destination.  |                   |
|   |                     | 10                       | Origin port charges  |                   |
|   |                     |                          | Charges payable at the port of origin.   |                   |
|   |                     | 11                       | Origin haulage charges   |                   |
|   |                     | 1131                     | <b>Code list qualifier</b>   | X an..3           |
|   |                     |                          | Identification of a code list.   |                   |
|   |                     |                          | Refer to D.97A Data Element Dictionary for acceptable code values.   |                   |
|   |                     | 3055                     | <b>Code list responsible agency, coded</b>   | X an..3           |
|   |                     |                          | Code identifying the agency responsible for a code list.   |                   |
|   |                     |                          | Refer to D.97A Data Element Dictionary for acceptable code values.   |                   |
|   | C231                |                          | <b>METHOD OF PAYMENT</b>   | X                 |
|   |                     |                          | Code identifying the method of payment.  |                   |
|   |                     | 4215                     | <b>Transport charges method of payment, coded</b>  | X an..3           |



Identification of method of payment for transport charges.

Refer to D.97A Data Element Dictionary for acceptable code values.

**1131 Code list qualifier** **X an..3**

Identification of a code list.

Refer to D.97A Data Element Dictionary for acceptable code values.

**3055 Code list responsible agency, coded** **X an..3**

Code identifying the agency responsible for a code list.

Refer to D.97A Data Element Dictionary for acceptable code values.

**M 4237 PREPAID/COLLECT INDICATOR, CODED** **M an..3**

Code indicating whether freight item amount is prepaid or to be collected.

**C Collect**

Charges are (to be) collected from the consignee at the destination.

**P Prepaid**

Charges are (to be) prepaid before the transport actually leaves.

**Group:** **TDT** Segment Group 8: Details of Transport  
**Position:** 0460  
**Group:**  
**Level:** 1  
**Usage:** Mandatory  
**Max Use:** 99  
**Purpose:** A group of segments to indicate details of the movement of goods such as mode and means of transport, locations, departure, and arrival date(s) and time(s).

**Segment Summary**

|   | <b>Pos.<br/>No.</b> | <b>Seg.<br/>ID</b> | <b>Name</b>                                    | <b>Req.<br/>Des.</b> | <b>Max.<br/>Use</b> | <b>Group:<br/>Repeat</b> |
|---|---------------------|--------------------|--|----------------------|---------------------|--------------------------|
| M | 0470                | TDT                | Details of Transport                           | M                    | 1                   |                          |
|   | 0500                |                    | Segment Group 9: Place/Location Identification | M                    |                     | 99                       |

**Segment:** **TDT** Details of Transport  
**Position:** 0470 (Trigger Segment)  
**Group:** Segment Group 8 (Details of Transport) Mandatory  
**Level:** 1  
**Usage:** Mandatory  
**Max Use:** 1  
**Purpose:** A segment to indicate information related to a certain stage of the transport, such as mode, means and carrier.

**Dependency Notes:**  
**Semantic Notes:**  
**Comments:**

**Notes:**  
 The use of main carriage information is mandatory (TDT+20).  
 The use of on-carriage or pre-carriage information is optional (TDT+10, TDT+30).  
 For mapping pre-carriage information to SE/BILLAD, only element 8212 can be used.  
 On-carriage information cannot be mapped to SE/BILLAD.  
 Example: TDT+20+1478+1+++++::VESSEL NAME'

**Data Element Summary**

|   | <u>Data Element</u> | <u>Component Element</u> | <u>Name</u>  | <u>Attributes</u> |
|---|---------------------|--------------------------|--|-------------------|
| M | 8051                |                          | <b>TRANSPORT STAGE QUALIFIER</b><br>Qualifier giving a specific meaning to the transport details.  | <b>M an..3</b>    |
|   |                     | 10                       | Pre-carriage transport<br>Transport by which the goods are moved prior to their main carriage transport.   |                   |
|   |                     | 20                       | Main-carriage transport<br>The primary stage in the movement of cargo from the point of origin to the intended destination.  |                   |
|   |                     | 30                       | On-carriage transport<br>Transport by which the goods are moved after the main carriage transport.   |                   |
| R | 8028                |                          | <b>CONVEYANCE REFERENCE NUMBER</b><br>Unique reference given by the carrier to a certain journey or departure of a means of transport (generic term).<br>Voyage Number in case of main carriage.<br>Strongly recommended - mandatory for INTTRA & GTNexus. | <b>O an..17</b>   |
|   | C220                |                          | <b>MODE OF TRANSPORT</b><br>Method of transport code or name. Code preferred.  | <b>O</b>          |
| M | 8067                |                          | <b>Mode of transport, coded</b><br>Coded method of transport used for the carriage of the goods.<br>Information in this element cannot be mapped to SE/BILLAD.   | <b>M an..3</b>    |
|   |                     | 1                        | Maritime   |                   |
|   |                     | 2                        | Rail   |                   |
|   |                     | 3                        | Road   |                   |
|   |                     | 4                        | Air  |                   |

|             |             |             |  |          |               |
|-------------|-------------|-------------|--|----------|---------------|
|             |             | 8           | Inland Water   |          |               |
|             |             | <b>8066</b> | <b>Mode of transport</b>   | <b>X</b> | <b>an..17</b> |
|             |             |             | Method of transport used for the carriage of the goods.  |          |               |
| <b>C228</b> |             |             | <b>TRANSPORT MEANS</b>   | <b>X</b> |               |
|             |             |             | Code and/or name identifying the type of means of transport.   |          |               |
|             |             | <b>8179</b> | <b>Type of means of transport identification</b>   | <b>X</b> | <b>an..8</b>  |
|             |             |             | Code defining the type of the means of transport being utilized.<br>Refer to D.97A Data Element Dictionary for acceptable code values.   |          |               |
|             |             | <b>8178</b> | <b>Type of means of transport</b>  | <b>X</b> | <b>an..17</b> |
|             |             |             | Description of the type of the means of transport being utilized.  |          |               |
| <b>C040</b> |             |             | <b>CARRIER</b>   | <b>O</b> |               |
|             |             |             | Identification of a carrier by code and/or by name. Code preferred.  |          |               |
|             |             |             | This information is not mapped to SE/BILLAD.   |          |               |
|             |             | <b>3127</b> | <b>Carrier identification</b>  | <b>O</b> | <b>an..17</b> |
|             |             |             | Identification of party undertaking or arranging transport of goods between named points.<br>SCAC code.  |          |               |
|             |             | <b>1131</b> | <b>Code list qualifier</b>   | <b>O</b> | <b>an..3</b>  |
|             |             |             | Identification of a code list.<br>Refer to D.97A Data Element Dictionary for acceptable code values.   |          |               |
|             |             | <b>3055</b> | <b>Code list responsible agency, coded</b>   | <b>O</b> | <b>an..3</b>  |
|             |             |             | Code identifying the agency responsible for a code list.<br>Refer to D.97A Data Element Dictionary for acceptable code values.   |          |               |
|             |             | <b>3128</b> | <b>Carrier name</b>  | <b>O</b> | <b>an..35</b> |
|             |             |             | Name of party undertaking or arranging transport of goods between named points.  |          |               |
| <b>8101</b> |             |             | <b>TRANSIT DIRECTION, CODED</b>  | <b>X</b> | <b>an..3</b>  |
|             |             |             | Identification of the point of origin and point of direction.<br>Refer to D.97A Data Element Dictionary for acceptable code values.  |          |               |
| <b>C401</b> |             |             | <b>EXCESS TRANSPORTATION INFORMATION</b>   | <b>X</b> |               |
|             |             |             | To provide details of reason for, and responsibility for, use of transportation other than normally utilized.  |          |               |
|             |             | <b>8457</b> | <b>Excess transportation reason, coded</b>   | <b>X</b> | <b>an..3</b>  |
|             |             |             | Indication of reason for excess transportation.<br>Refer to D.97A Data Element Dictionary for acceptable code values.  |          |               |
|             |             | <b>8459</b> | <b>Excess transportation responsibility, coded</b>   | <b>X</b> | <b>an..3</b>  |
|             |             |             | Indication of responsibility for excess transportation.<br>Refer to D.97A Data Element Dictionary for acceptable code values.  |          |               |
|             |             | <b>7130</b> | <b>Customer authorization number</b>   | <b>X</b> | <b>an..17</b> |
|             |             |             | Customer provided authorization number to allow supplier to ship goods under specific freight conditions. This number will be transmitted back to customer in the dispatch advice message. |          |               |
| <b>M</b>    | <b>C222</b> |             | <b>TRANSPORT IDENTIFICATION</b>  | <b>M</b> |               |
|             |             |             | Code and/or name identifying the means of transport.<br>If data element equals 20, the vessel call sign (or IMO number) and the vessel   |          |               |

|             |             |  |          |               |
|-------------|-------------|--|----------|---------------|
|             |             | name can be given.   |          |               |
|             | <b>8213</b> | <b>Id. of means of transport identification</b>  | <b>O</b> | <b>an..9</b>  |
|             |             | Identification of the means of transport by name or number.<br>IMO number (=lloyd's number) in case of maritime transport.     |          |               |
|             | <b>1131</b> | <b>Code list qualifier</b>   | <b>O</b> | <b>an..3</b>  |
|             |             | Identification of a code list.   |          |               |
|             |             | 146 Means of transport identification  |          |               |
|             |             | Code identifying the name or number of a means of transport (vessel, vehicle).   |          |               |
|             | <b>3055</b> | <b>Code list responsible agency, coded</b>   | <b>X</b> | <b>an..3</b>  |
|             |             | Code identifying the agency responsible for a code list.<br>Refer to D.97A Data Element Dictionary for acceptable code values. |          |               |
| <b>M</b>    | <b>8212</b> | <b>Id. of the means of transport</b>   | <b>M</b> | <b>an..35</b> |
|             |             | Identification of the means of transport by name or number.<br>Vessel name (or other means of transport ID free text)          |          |               |
|             | <b>8453</b> | <b>Nationality of means of transport, coded</b>  | <b>X</b> | <b>an..3</b>  |
|             |             | Coded name of the country in which a means of transport is registered.   |          |               |
| <b>8281</b> |             | <b>TRANSPORT OWNERSHIP, CODED</b>  | <b>X</b> | <b>an..3</b>  |
|             |             | Code indicating the ownership of the means of transport.<br>Refer to D.97A Data Element Dictionary for acceptable code values. |          |               |

**Group:** **LOC** Segment Group 9: Place/Location Identification  
**Position:** 0500  
**Group:** Segment Group 8 (Details of Transport) Mandatory  
**Level:** 2  
**Usage:** Mandatory  
**Max Use:** 99  
**Purpose:** A group of segments to specify a location and date/time related to this leg of transport.

**Segment Summary**

|   | <u>Pos.</u> | <u>Seg.</u> |                               | <u>Req.</u> | <u>Max.</u> | <u>Group:</u> |
|---|-------------|-------------|-------------------------------|-------------|-------------|---------------|
|   | <u>No.</u>  | <u>ID</u>   | <u>Name</u>                   | <u>Des.</u> | <u>Use</u>  | <u>Repeat</u> |
| M | 0510        | LOC         | Place/Location Identification | M           | 1           |               |

**Segment:** **LOC** **Place/Location Identification**  
**Position:** 0510 (Trigger Segment)  
**Group:** Segment Group 9 (Place/Location Identification) Mandatory  
**Level:** 2  
**Usage:** Mandatory  
**Max Use:** 1  
**Purpose:** A segment to indicate a location such as origin, destination, stop off, etc. related to this leg of transport.

**Dependency Notes:**

**Semantic Notes:**

**Comments:**

**Notes:**

The segment is always mandatory with qualifiers 9 and 11.

The place of receipt (qualifier 88) is mandatory in case of door-pier and door-door movements.

The place of delivery (qualifier 7) is mandatory in case of pier-door and door-door movements.

Please only use qualifier 198 if agreed with the carrier. This qualifier is used for Customs purposes (e.g. US 10+2).

It is recommended to use both UN/LOCODES (element 3225) and locations descriptions (element 3224). The location in words is to be literally taken over on the Bill of lading.

Optionally, a berth can be indicated in element 3223 (coded) or 3222 (free text).

Example: LOC+9+BEANR::6:ANTWERPEN'

**Data Element Summary**

| M | <u>Data Element</u> | <u>Component Element</u> | <u>Name</u>   | <u>Attributes</u>   |
|---|---------------------|--------------------------|---|---|
|   |                     | 3227                     |   | <b>PLACE/LOCATION QUALIFIER</b><br>Code identifying the function of a location. |
|   |                     | 7                        | Place of delivery<br>(3246) Place to which the goods are to be finally delivered under transport contract terms (operational term).   |   |
|   |                     | 9                        | Place/port of loading<br>(3334 + 3230) Seaport, airport, freight terminal, rail station or other place at which the goods (cargo) are loaded on to the means of transport being used for their carriage.          |   |
|   |                     | 11                       | Place/port of discharge<br>(3392 + 3414) Seaport, airport, freight terminal, rail station or other place at which the goods (cargo) are unloaded from the means of transport having been used for their carriage. |   |
|   |                     | 88                       | Place of receipt<br>Identification of the location at which the cargo is actually   |   |

|          |             |     |  |                 |
|----------|-------------|-----|--|-----------------|
|          |             | 198 | received.<br>Origin location<br>Bill of lading origin of the goods (contractual).<br>Used for Customs purposes in the first place (e.g. US 10+2) |                 |
| <b>M</b> | <b>C517</b> |     | <b>LOCATION IDENTIFICATION</b>   | <b>M</b>        |
|          |             |     | Identification of a location by code or name.  |                 |
|          | <b>3225</b> |     | <b>Place/location identification</b>   | <b>O an..25</b> |
|          |             |     | Identification of the name of place/location, other than 3164 City name.<br>UN/LOCODES are mandatory for qualifiers 9, 11, 7 and 88.             |                 |
|          | <b>1131</b> |     | <b>Code list qualifier</b>   | <b>O an..3</b>  |
|          |             |     | Identification of a code list.<br>Refer to D.97A Data Element Dictionary for acceptable code values.   |                 |
|          | <b>3055</b> |     | <b>Code list responsible agency, coded</b>   | <b>O an..3</b>  |
|          |             | 6   | UN/ECE (United Nations - Economic Commission for Europe)   |                 |
|          | <b>3224</b> |     | <b>Place/location</b>  | <b>O an..70</b> |
|          |             |     | Name of place/location, other than 3164 City name.   |                 |
|          | <b>C519</b> |     | <b>RELATED LOCATION ONE IDENTIFICATION</b>   | <b>O</b>        |
|          |             |     | Identification the first related location by code or name.   |                 |
|          | <b>3223</b> |     | <b>Related place/location one identification</b>   | <b>O an..25</b> |
|          |             |     | Specification of the first related place/location by code.<br>Country code (ISO 2-character codes).  |                 |
|          | <b>1131</b> |     | <b>Code list qualifier</b>   | <b>X an..3</b>  |
|          |             |     | Identification of a code list.   |                 |
|          | <b>3055</b> |     | <b>Code list responsible agency, coded</b>   | <b>X an..3</b>  |
|          |             |     | Code identifying the agency responsible for a code list.   |                 |
|          | <b>3222</b> |     | <b>Related place/location one</b>  | <b>X an..70</b> |
|          |             |     | Specification of the first related place/location by name.   |                 |
|          | <b>C553</b> |     | <b>RELATED LOCATION TWO IDENTIFICATION</b>   | <b>O</b>        |
|          |             |     | Identification of second related location by code or name.   |                 |
|          | <b>3233</b> |     | <b>Related place/location two identification</b>   | <b>M an..25</b> |
|          |             |     | Specification of a second related place/location by code.<br>Berth code  |                 |
|          | <b>1131</b> |     | <b>Code list qualifier</b>   | <b>M an..3</b>  |
|          |             |     | Identification of a code list.<br>BER Berth<br>Refer to D.97A Data Element Dictionary for acceptable code values.                                |                 |
|          | <b>3055</b> |     | <b>Code list responsible agency, coded</b>   | <b>M an..3</b>  |
|          |             | SE  | Seagha   |                 |
|          |             | ZZZ | Mutually defined   |                 |
|          | <b>3232</b> |     | <b>Related place/location two</b>  | <b>X an..70</b> |



**5479**

Specification of a second related place/location by name.

**RELATION, CODED**

**X an..3**

To specify the relationship between two or more items.

**Group:** **NAD** Segment Group 11: Name and Address  
**Position:** 0560  
**Group:**  
**Level:** 1  
**Usage:** Mandatory  
**Max Use:** 99  
**Purpose:** A group of segments to identify a party, related references, locations contacts, required documents, and charges to be paid by the party.

**Segment Summary**

|   | <b>Pos.<br/>No.</b> | <b>Seg.<br/>ID</b> | <b>Name</b>                           | <b>Req.<br/>Des.</b> | <b>Max.<br/>Use</b> | <b>Group:<br/>Repeat</b> |
|---|---------------------|--------------------|---------------------------------------|----------------------|---------------------|--------------------------|
| M | 0570                | NAD                | Name and Address                      | M                    | 1                   |                          |
|   | 0600                |                    | Segment Group 12: Contact Information | O                    |                     | 9                        |
|   | 0730                |                    | Segment Group 15: Reference           | C                    |                     | 9                        |

**Segment:** **NAD** Name and Address  
**Position:** 0570 (Trigger Segment)  
**Group:** Segment Group 11 (Name and Address) Mandatory  
**Level:** 1  
**Usage:** Mandatory  
**Max Use:** 1  
**Purpose:** A segment to identify the party's name, address, and function.

**Dependency Notes:**

**Semantic Notes:**

**Comments:**

**Notes:**

This segment is mandatory for the consignor (qualifier CZ in data element 3035), the consignee (qualifier CN in data element 3035) and the carrier's agent (qualifier CG).

The carrier's agent in element 3039 (CG in data element 3035) should be a valid agent code (Seagha agent code list).

With qualifier CA, the SCAC-code of the carrier is used in data element 3039. For INTTRA and GTNexus you can use the SCAC code instead of the shipping agent.

With qualifier HR, a valid shipping line service code must be put in data element 3039 (Seagha shipping line code list).

Unstructured free text in data element C058 is used for a consignee, a consignor, freight forwarder, notify party no. 1, notify party no. 2. If the B/L is "to order", the words "ORDER" or similar are sufficient in element 3124.

Postal code and country code only allowed in case this is required for Customs Authorities. It is not automatically printed on the B/L.

In case of qualifier MR, the element 3035 is the only element. The qualifier MR is used in case notifications need to be sent to 3rd parties, e.g. the US 10+2 information. It is only further used by INTTRA. E.g. NAD+MR'.

Example: NAD+CG+AGENTX:160:SE'

Extra information US/Canada/Brazil requirements (only INTTRA):

For export to Canada:

When Port of Discharge (0520LOC) is a Canadian port, postal code of the Consignee (CN) must be provided whenever Consignee's unstructured address is provided. Consignee address and postal code may be omitted when shipment is "to order".

For export to US:

a. When Port of Discharge (0520LOC) is a US port, postal code of the Consignee (CN) must be provided whenever an unstructured address (element C059, 3042) is provided for the Consignee Party. Consignee address and postal code may be omitted when shipment is "to order".

b. Additionally, postal code of Main Notify Party (NI) must be provided whenever an

unstructured address (element C059, 3042) is provided for the Main Notify Party.

c. Following qualifiers can be used for US 10+2 regulation (optionally):

- EX (exporter/seller)
- GO (goods owner/buyer)
- ST (ship to)
- SU (supplier/manufacturer)
- CS (consolidator)
- IM (importer)

For export to Brazil (Discharge Port in Brazil):

- a. Government Reference/Tax ID for Consignee must be provided whenever Consignee address is provided.
- b. To Order shipments: Name/ Unstructured Address, Country Code and Government Reference /Tax ID (NAD+RFF+GN1153) for Main Notify Party must be provided whenever Consignee address is omitted.
- c. Country code (3207) must be provided for Consignee whenever Consignee address is provided.
- d. If Country code for Consignee is NOT Brazil, then Notify Party name/address, Country Code and Government Reference/Tax ID (NAD+RFF+GN1153) must be provided.

#### Data Element Summary

| <u>Data Element</u> | <u>Component Element</u> | <u>Name</u>   | <u>Attributes</u> |
|---------------------|--------------------------|---|-------------------|
| M                   | 3035                     | <b>PARTY QUALIFIER</b>  | M an..3           |
|                     |                          | Code giving specific meaning to a party.  |                   |
|                     | CA                       | Carrier<br>(3126) Party undertaking or arranging transport of goods between named points.   |                   |
|                     | CG                       | Carrier's agent<br>Party authorized to act for or on behalf of carrier.   |                   |
|                     | CN                       | Consignee<br>(3132) Party to which goods are consigned.   |                   |
|                     | CS                       | Consolidator<br>Party consolidating various consignments, payments etc.<br>In case of consolidated shipments (US 10+2).   |                   |
|                     | CZ                       | Consignor<br>(3336) Party which, by contract with a carrier, consigns or sends goods with the carrier, or has them conveyed by him. Synonym: shipper, sender.   |                   |
|                     | EX                       | Exporter<br>(3030) Party who makes - or on whose behalf a Customs clearing agent or other authorized person makes - an export declaration. This may include a manufacturer, seller or other person. Within a Customs union, consignor may have the same meaning as exporter.<br>Ultimate exporter in case of consolidation. |                   |

|  |    |  |
|--|----|--|
|  | FW | Seller in case of US 10+2.<br>Freight forwarder  |
|  | GO | Party arranging forwarding of goods.<br>Goods owner<br>The party which owns the goods.   |
|  | HR | Ultimate consignee in case of consolidation.<br>Buyer (goods owner) in case of US 10+2.<br>Shipping line service<br>Identifies the shipping line service organization.   |
|  | IM | Importer<br>(3020) Party who makes - or on whose behalf a Customs clearing agent or other authorized person makes - an import declaration. This may include a person who has possession of the goods or to whom the goods are consigned. |
|  | MR | Imporer US 10+2<br>Message recipient   |
|  | N1 | Notify party no. 1   |
|  | N2 | Notify party no. 2   |
|  | N3 | Notify party no. 3   |
|  | N4 | Notify party no. 4   |
|  | ST | Ship to<br>Identification of the party to where goods will be or have been shipped.  |
|  | SU | Ship to US 10+2 (e.g. in case of FROB)<br>Supplier<br>(3280) Party which manufactures or otherwise has possession of goods, and consigns or makes them available in trade.   |
|  |    | Manufacturer US 10+2   |

**C082**

**PARTY IDENTIFICATION DETAILS** **O**

Identification of a transaction party by code.

**M** **3039** **Party id. identification** **M an..35**

Code identifying a party involved in a transaction.

This element is mandatory with qualifier CA, CG and HR.

**1131** **Code list qualifier** **O an..3**

Identification of a code list.

Use qualifier 172 with qualifier CA and HR in data element 3035.

160 Party identification  
Identification of parties, corporates, etc.

172 Carrier code

**3055** **Code list responsible agency, coded** **O an..3**

Code identifying the agency responsible for a code list.

SE Seagha

**C058**

**NAME AND ADDRESS** **O**

Unstructured name and address: one to five lines.

|             |             |   |                 |
|-------------|-------------|---|-----------------|
| <b>M</b>    | <b>3124</b> | <b>Name and address line</b><br>Free form name and address description.   | <b>M an..35</b> |
|             | <b>3124</b> | <b>Name and address line</b><br>Free form name and address description.   | <b>O an..35</b> |
|             | <b>3124</b> | <b>Name and address line</b><br>Free form name and address description.   | <b>O an..35</b> |
|             | <b>3124</b> | <b>Name and address line</b><br>Free form name and address description.   | <b>O an..35</b> |
|             | <b>3124</b> | <b>Name and address line</b><br>Free form name and address description.   | <b>O an..35</b> |
| <b>C080</b> |             | <b>PARTY NAME</b><br>Identification of a transaction party by name, one to five lines. Party name may be formatted.   | <b>X</b>        |
|             | <b>3036</b> | <b>Party name</b><br>Name of a party involved in a transaction.   | <b>X an..35</b> |
|             | <b>3036</b> | <b>Party name</b><br>Name of a party involved in a transaction.   | <b>X an..35</b> |
|             | <b>3036</b> | <b>Party name</b><br>Name of a party involved in a transaction.   | <b>X an..35</b> |
|             | <b>3036</b> | <b>Party name</b><br>Name of a party involved in a transaction.   | <b>X an..35</b> |
|             | <b>3036</b> | <b>Party name</b><br>Name of a party involved in a transaction.   | <b>X an..35</b> |
|             | <b>3045</b> | <b>Party name format, coded</b><br>Specification of the representation of a party name.<br>Refer to D.97A Data Element Dictionary for acceptable code values. | <b>X an..3</b>  |
| <b>C059</b> |             | <b>STREET</b><br>Street address and/or PO Box number in a structured address: one to three lines.   | <b>X</b>        |
|             | <b>3042</b> | <b>Street and number/p.o. box</b><br>Street and number in plain language, or Post Office Box No.  | <b>X an..35</b> |
|             | <b>3042</b> | <b>Street and number/p.o. box</b><br>Street and number in plain language, or Post Office Box No.  | <b>X an..35</b> |
|             | <b>3042</b> | <b>Street and number/p.o. box</b><br>Street and number in plain language, or Post Office Box No.  | <b>X an..35</b> |
|             | <b>3042</b> | <b>Street and number/p.o. box</b><br>Street and number in plain language, or Post Office Box No.  | <b>X an..35</b> |
| <b>3164</b> |             | <b>CITY NAME</b><br>Name of a city (a town, a village) for addressing purposes.   | <b>X an..35</b> |
| <b>3229</b> |             | <b>COUNTRY SUB-ENTITY IDENTIFICATION</b><br>Identification of the name of sub-entities (state, province) defined by appropriate governmental agencies.        | <b>X an..9</b>  |
| <b>3251</b> |             | <b>POSTCODE IDENTIFICATION</b><br>Code defining postal zones or addresses.<br>Only if required by Customs Authorities.  | <b>O an..9</b>  |

3207

**COUNTRY, CODED**

**O an..3**

Identification of the name of a country or other geographical entity as specified in ISO 3166.

ISO 2-character country code.

Only if required by Customs Authorities.

**Group:** **CTA** Segment Group 12: Contact Information  
**Position:** 0600  
**Group:** Segment Group 11 (Name and Address) Mandatory  
**Level:** 2  
**Usage:** Optional (Optional)  
**Max Use:** 9  
**Purpose:** A group of segments identifying a contact and its communications related to the party.

**Segment Summary**

|   | <u>Pos. No.</u> | <u>Seg. ID</u> | <u>Name</u>           | <u>Req. Des.</u> | <u>Max. Use</u> | <u>Group: Repeat</u> |
|---|-----------------|----------------|-----------------------|------------------|-----------------|----------------------|
| M | 0610            | CTA            | Contact Information   | M                | 1               |                      |
|   | 0620            | COM            | Communication Contact | O                | 9               |                      |



**Segment:** **CTA** Contact Information

**Position:** 0610 (Trigger Segment)

**Group:** Segment Group 12 (Contact Information) Optional (Optional)

**Level:** 2

**Usage:** Mandatory

**Max Use:** 1

**Purpose:** A segment to identify a person or department within a party.

**Dependency Notes:**

**Semantic Notes:**

**Comments:**

**Notes:**

If the dangerous goods contact in the DGS group (CTA/COM) on goods level is not provided, the contact information of the shipper (CTA/COM) can be used as dangerous goods contact for INTTRA/GTNexus.

Example: CTA+IC+:JACK COGAN'

#### Data Element Summary

|   | <u>Data Element</u> | <u>Component Element</u> | <u>Name</u>  | <u>Attributes</u> |
|---|---------------------|--------------------------|--|-------------------|
| M | 3139                |                          | <b>CONTACT FUNCTION, CODED</b><br>Code specifying the function of a contact (e.g. department or person).<br>BN Certification contact<br>Only used for NAD with qualifier MR.<br>IC Information contact<br>Department/person to contact for questions regarding transactions. | M an..3           |
| M | C056                |                          | <b>DEPARTMENT OR EMPLOYEE DETAILS</b><br>Code and/or name of a department or employee. Code preferred.   | M                 |
|   |                     | 3413                     | <b>Department or employee identification</b><br>Internal identification code.  | O an..17          |
| M |                     | 3412                     | <b>Department or employee</b><br>The department or person within an organizational entity.   | M an..35          |

**Segment:** **COM** **Communication Contact**  
**Position:** 0620  
**Group:** Segment Group 12 (Contact Information)      Optional (Optional)  
**Level:** 3  
**Usage:** Optional (Optional)  
**Max Use:** 9  
**Purpose:** A segment to identify a communication number of a person or department to whom communication should be directed.

**Dependency Notes:**

**Semantic Notes:**

**Comments:**

**Notes:**

Communication numbers are to be transmitted without spaces or hyphens. Telephone and fax numbers should include country codes.

Example: COM+12341231234:TE'

**Data Element Summary**

| <b>Data Element</b>   | <b>Component Element</b> | <b>Name</b>   | <b>Attributes</b> |
|---|--------------------------|---|-------------------|
| M   | C076                     | <b>COMMUNICATION CONTACT</b><br>Communication number of a department or employee in a specified channel.  | M                 |
| M   | 3148                     | <b>Communication number</b><br>The communication number.  | M an..512         |
| M   | 3155                     | <b>Communication channel qualifier</b><br>Code identifying the type of communication channel being used.  | M an..3           |
| For NAD/MR only e-mail addresses (qualifier EM) are accepted. |                          |   |                   |
|   | EM                       | Electronic mail<br>Creating/sending/receiving of unstructured free text messages or documents using computer network, a mini-computer or an attached modem and regular telephone line or other electronic transmission media. |                   |
|   | FX                       | Telefax<br>Device used for transmitting and reproducing fixed graphic material (as printing) by means of signals over telephone lines or other electronic transmission media.   |                   |
|   | TE                       | Telephone<br>Voice/data transmission by telephone.  |                   |
|   | TL                       | Telex<br>Transmission of text/data via telex.   |                   |

**Group:** **RFF** Segment Group 15: Reference  
**Position:** 0730  
**Group:** Segment Group 11 (Name and Address) Mandatory  
**Level:** 2  
**Usage:** Conditional (Optional)  
**Max Use:** 9  
**Purpose:** A group of segments to specify a reference related to the party.

**Segment Summary**

|   | <u>Pos.</u><br><u>No.</u> | <u>Seg.</u><br><u>ID</u> | <u>Name</u> | <u>Req.</u><br><u>Des.</u> | <u>Max.</u><br><u>Use</u> | <u>Group:</u><br><u>Repeat</u> |
|---|---------------------------|--------------------------|-------------|----------------------------|---------------------------|--------------------------------|
| M | 0740                      | RFF                      | Reference   | M                          | 1                         |                                |

**Segment:** **RFF** Reference  
**Position:** 0740 (Trigger Segment)  
**Group:** Segment Group 15 (Reference) Conditional (Optional)  
**Level:** 2  
**Usage:** Mandatory  
**Max Use:** 1  
**Purpose:** A segment to identify a reference used by a party.

**Dependency Notes:**

**Semantic Notes:**

**Comments:**

**Notes:**

Extra information US/Brazil requirements (only INTTRA):

For export to Brazil:

a. When Port of Discharge (0520LOC) is a Brazilian port, and Consignee address is provided and Country Code for Consignee is Brazil, then Consignee's Government Reference/Tax ID (NAD+RFF+GN) must be provided.

b. When Port of Discharge (0520LOC) is a Brazilian port, and Consignee address is NOT provided OR Country Code for Consignee is NOT Brazil, then Government Reference/Tax ID (NAD+RFF+GN) and Name and Address for Main Notify must be provided.

For exports to US:

a. Requestor may provide the Government Reference/Tax ID (NAD+RFF+GN) for the Importer to 3rd parties responsible for "10+2" Importer Security Filing ("ISF+10"), Carriers will ignore this information.

**Data Element Summary**

|   | <u>Data Element</u> | <u>Component Element</u> | <u>Name</u>  | <u>Attributes</u> |
|---|---------------------|--------------------------|--|-------------------|
| M | C506                |                          | <b>REFERENCE</b><br>Identification of a reference.   | M                 |
| M |                     | 1153                     | <b>Reference qualifier</b><br>Code giving specific meaning to a reference segment or a reference number.<br>GN Government reference number<br>Description to be provided.<br>Tax ID number, e.g. US or Brazil consignee or notify party. | M an..3           |
|   |                     | 1154                     | <b>Reference number</b><br>Identification number the nature and function of which can be qualified by an entry in data element 1153 Reference qualifier.   | C an..35          |
| X |                     | 1156                     | <b>Line number</b><br>Number of the line in the document/message referenced in 1154 Reference number.  | C an..6           |
| X |                     | 4000                     | <b>Reference version number</b><br>To uniquely identify a reference by its revision number.  | C an..35          |

**Group:** **GID** Segment Group 18: Goods Item Details  
**Position:** 0880  
**Group:**  
**Level:** 1  
**Usage:** Optional (Required)  
**Max Use:** 999  
**Purpose:** A group of segments to describe the goods items for which transport is undertaken.

**Segment Summary**

|   | <u>Pos. No.</u> | <u>Seg. ID</u> | <u>Name</u>                              | <u>Req. Des.</u> | <u>Max. Use</u> | <u>Group: Repeat</u> |
|---|-----------------|----------------|--|------------------|-----------------|----------------------|
| M | 0890            | GID            | Goods Item Details                       | M                | 1               |                      |
|   | 0910            | TMP            | Temperature                              | O                | 1               |                      |
|   | 0920            | RNG            | Range Details                            | O                | 1               |                      |
|   | 0950            | MOA            | Monetary Amount                          | O                | 9               |                      |
|   | 0960            | PIA            | Additional Product Id                    | O                | 9               |                      |
| M | 0970            | FTX            | Free Text                                | M                | 99              |                      |
|   | 0980            |                | Segment Group 19: Name and Address       | C                |                 | 9                    |
|   | 1020            |                | Segment Group 20: Measurements           | M                |                 | 99                   |
|   | 1080            |                | Segment Group 22: Reference              | O                |                 | 9                    |
|   | 1110            |                | Segment Group 23: Package Identification | O                |                 | 999                  |
|   | 1330            |                | Segment Group 29: Split Goods Placement  | O                |                 | 999                  |
|   | 1470            |                | Segment Group 32: Dangerous Goods        | O                |                 | 9                    |

**Segment:** **GID** Goods Item Details  
**Position:** 0890 (Trigger Segment)  
**Group:** Segment Group 18 (Goods Item Details) Optional (Required)  
**Level:** 1  
**Usage:** Mandatory  
**Max Use:** 1  
**Purpose:** A segment to identify a goods item for which transport is undertaken. A goods item can be identified by up to three levels of packaging.

**Dependency Notes:**

**Semantic Notes:**

**Comments:**

**Notes:**

**Segment Notes:**

A goods item consists of several packages of a :

- specific type;
- specific weight;
- specific measure;
- specific value;
- specific dangerous goods class.

Whenever one of these changes, the GID group has to be repeated.

The use of GID with '0' in data element 1496 is not recommended any more.  
 The GID segment with '0' in data element 1496 is information which applies to the whole message. Only FTX- and PCI-segments can be used in this case. The goods item number 0 may occur only once and is to be given in the beginning. This aspect makes this manual compatible with SE/BILLAD.

In this manual 3 levels of packaging are possible (outer, intermediate, inner). Only one level of packaging is mandatory. The outer packaging should be the lowest external packaging unit.

The use of package codes in element 7065 is **STRONGLY RECOMMENDED** and mandatory for INTTRA, GTNexus.

It is recommended to provide both package code and description. The package description in element 7064 should be printed literally on the B/L.

Example: GID+1+20:BX:3::BOX+40:CT:2::CARTON'

**Data Element Summary**

| <b>Data Element</b>  | <b>Component Element</b> | <b>Name</b>       | <b>Attributes</b> |
|--|--------------------------|-------------------|-------------------|
| M  | 1496                     | GOODS ITEM NUMBER | M n..5            |
| <p>Serial number differentiating each separate goods item entry of a consignment as contained in one document/declaration.</p> <p>The GID group will give all the specific characteristics of the different goods items in case the GID numbers are 1, 2, 3, 4,5,6, ...The goods item number (differing from 0) is numbered consecutively.</p> |                          |                   |                   |

|   |      |  |          |
|---|------|--|----------|
| M | C213 | <b>NUMBER AND TYPE OF PACKAGES</b>   | M        |
|   |      | Number and type of individual parts of a shipment.   |          |
| M | 7224 | <b>Number of packages</b>  | M n..8   |
|   |      | Number of individual parts of a shipment either unpacked, or packed in such a way that they cannot be divided without first undoing the packing. |          |
| R | 7065 | <b>Type of packages identification</b>   | O an..17 |
|   |      | Coded description of the form in which goods are presented.  |          |
|   |      | Package codes - UN Recommendation 21 two alpha code. The use of this codes is STRONGLY RECOMMENDED and mandatory for INTTRA/GTNexus.             |          |
| M | 1131 | <b>Code list qualifier</b>   | M an..3  |
|   |      | Identification of a code list.   |          |
|   |      | 3 Outer  |          |
|   | 3055 | <b>Code list responsible agency, coded</b>   | X an..3  |
|   |      | Code identifying the agency responsible for a code list.   |          |
|   |      | Refer to D.97A Data Element Dictionary for acceptable code values.   |          |
|   | 7064 | <b>Type of packages</b>  | O an..35 |
|   |      | Description of the form in which goods are presented.  |          |
|   | 7233 | <b>Packaging related information, coded</b>  | X an..3  |
|   |      | Code giving packaging, handling and marking related information.   |          |
|   |      | Refer to D.97A Data Element Dictionary for acceptable code values.   |          |
|   | C213 | <b>NUMBER AND TYPE OF PACKAGES</b>   | O        |
|   |      | Number and type of individual parts of a shipment.   |          |
| M | 7224 | <b>Number of packages</b>  | M n..8   |
|   |      | Number of individual parts of a shipment either unpacked, or packed in such a way that they cannot be divided without first undoing the packing. |          |
| R | 7065 | <b>Type of packages identification</b>   | O an..17 |
|   |      | Coded description of the form in which goods are presented.  |          |
|   |      | Package codes - UN Recommendation 21 two alpha code. The use of this codes is STRONGLY RECOMMENDED.  |          |
| M | 1131 | <b>Code list qualifier</b>   | M an..3  |
|   |      | Identification of a code list.   |          |
|   |      | 2 Intermediate   |          |
|   | 3055 | <b>Code list responsible agency, coded</b>   | X an..3  |
|   |      | Code identifying the agency responsible for a code list.   |          |
|   |      | Refer to D.97A Data Element Dictionary for acceptable code values.   |          |
|   | 7064 | <b>Type of packages</b>  | O an..35 |
|   |      | Description of the form in which goods are presented.  |          |
|   | 7233 | <b>Packaging related information, coded</b>  | X an..3  |
|   |      | Code giving packaging, handling and marking related information.   |          |
|   |      | Refer to D.97A Data Element Dictionary for acceptable code values.   |          |
|   | C213 | <b>NUMBER AND TYPE OF PACKAGES</b>   | O        |
|   |      | Number and type of individual parts of a shipment.   |          |
| M | 7224 | <b>Number of packages</b>  | M n..8   |

|             |             |   |
|-------------|-------------|---|
| <b>R</b>    | <b>7065</b> | <p>Number of individual parts of a shipment either unpacked, or packed in such a way that they cannot be divided without first undoing the packing.</p> <p><b>Type of packages identification</b> <span style="float: right;"><b>O an..17</b></span></p> <p>Coded description of the form in which goods are presented.</p> |
|             |             | <p>Package codes - UN Recommendation 21 two alpha code. The use of this codes is <b>STRONGLY RECOMMENDED</b>.</p>   |
| <b>M</b>    | <b>1131</b> | <p><b>Code list qualifier</b> <span style="float: right;"><b>M an..3</b></span></p> <p>Identification of a code list.</p> <p style="padding-left: 20px;">1 Inner</p>  |
|             | <b>3055</b> | <p><b>Code list responsible agency, coded</b> <span style="float: right;"><b>X an..3</b></span></p> <p>Code identifying the agency responsible for a code list.</p> <p>Refer to D.97A Data Element Dictionary for acceptable code values.</p>   |
|             | <b>7064</b> | <p><b>Type of packages</b> <span style="float: right;"><b>O an..35</b></span></p> <p>Description of the form in which goods are presented.</p>  |
|             | <b>7233</b> | <p><b>Packaging related information, coded</b> <span style="float: right;"><b>X an..3</b></span></p> <p>Code giving packaging, handling and marking related information.</p> <p>Refer to D.97A Data Element Dictionary for acceptable code values.</p>  |
| <b>C213</b> |             | <p><b>NUMBER AND TYPE OF PACKAGES</b> <span style="float: right;"><b>X</b></span></p> <p>Number and type of individual parts of a shipment.</p>   |
|             | <b>7224</b> | <p><b>Number of packages</b> <span style="float: right;"><b>X n..8</b></span></p> <p>Number of individual parts of a shipment either unpacked, or packed in such a way that they cannot be divided without first undoing the packing.</p>   |
|             | <b>7065</b> | <p><b>Type of packages identification</b> <span style="float: right;"><b>X an..17</b></span></p> <p>Coded description of the form in which goods are presented.</p>   |
|             | <b>1131</b> | <p><b>Code list qualifier</b> <span style="float: right;"><b>X an..3</b></span></p> <p>Identification of a code list.</p> <p>Refer to D.97A Data Element Dictionary for acceptable code values.</p>   |
|             | <b>3055</b> | <p><b>Code list responsible agency, coded</b> <span style="float: right;"><b>X an..3</b></span></p> <p>Code identifying the agency responsible for a code list.</p> <p>Refer to D.97A Data Element Dictionary for acceptable code values.</p>   |
|             | <b>7064</b> | <p><b>Type of packages</b> <span style="float: right;"><b>X an..35</b></span></p> <p>Description of the form in which goods are presented.</p>  |
|             | <b>7233</b> | <p><b>Packaging related information, coded</b> <span style="float: right;"><b>X an..3</b></span></p> <p>Code giving packaging, handling and marking related information.</p> <p>Refer to D.97A Data Element Dictionary for acceptable code values.</p>  |
| <b>C213</b> |             | <p><b>NUMBER AND TYPE OF PACKAGES</b> <span style="float: right;"><b>X</b></span></p> <p>Number and type of individual parts of a shipment.</p>   |
|             | <b>7224</b> | <p><b>Number of packages</b> <span style="float: right;"><b>X n..8</b></span></p> <p>Number of individual parts of a shipment either unpacked, or packed in such a way that they cannot be divided without first undoing the packing.</p>   |
|             | <b>7065</b> | <p><b>Type of packages identification</b> <span style="float: right;"><b>X an..17</b></span></p> <p>Coded description of the form in which goods are presented.</p>   |
|             | <b>1131</b> | <p><b>Code list qualifier</b> <span style="float: right;"><b>X an..3</b></span></p> <p>Identification of a code list.</p> <p>Refer to D.97A Data Element Dictionary for acceptable code values.</p>   |



- |             |  |          |               |
|-------------|--|----------|---------------|
| <b>3055</b> | <b>Code list responsible agency, coded</b>   | <b>X</b> | <b>an..3</b>  |
|             | Code identifying the agency responsible for a code list.<br>Refer to D.97A Data Element Dictionary for acceptable code values.         |          |               |
| <b>7064</b> | <b>Type of packages</b>  | <b>X</b> | <b>an..35</b> |
|             | Description of the form in which goods are presented.  |          |               |
| <b>7233</b> | <b>Packaging related information, coded</b>  | <b>X</b> | <b>an..3</b>  |
|             | Code giving packaging, handling and marking related information.<br>Refer to D.97A Data Element Dictionary for acceptable code values. |          |               |

**Segment:** **TMP** Temperature  
**Position:** 0910  
**Group:** Segment Group 18 (Goods Item Details) Optional (Required)  
**Level:** 2  
**Usage:** Optional (Optional)  
**Max Use:** 1  
**Purpose:** A segment to specify a temperature setting for a goods item.

**Dependency Notes:**

**Semantic Notes:**

**Comments:**

**Notes:**

For INTTRA/GTNexus, the temperature can only be provided on container level (FTX segment in EQD group) - only in case of a reefer container

If the temperature value is negative the minus (-) sign must be transmitted in data element 6246. The minus sign and/or decimal point do not count in the total number of characters. This is demonstrated in the following example:

TMP+2+-15.0:CEL' (Transport temperature -15.0 degrees C)

Temperatures should only be expressed to one decimal place.

Example: TMP+2+003:CEL'

**Data Element Summary**

| <b>Data Element</b> | <b>Component Element</b> | <b>Name</b>  | <b>Attributes</b> |
|---------------------|--------------------------|--|-------------------|
| <b>M</b>            | <b>6245</b>              | <b>TEMPERATURE QUALIFIER</b><br>A code giving specific meaning to the temperature.<br>2 Transport temperature<br>The temperature at which cargo is to be kept while it is under transport. | <b>M an..3</b>    |
|                     | <b>C239</b>              | <b>TEMPERATURE SETTING</b><br>The temperature under which the goods are (to be) stored or shipped.   | <b>O</b>          |
| <b>M</b>            | <b>6246</b>              | <b>Temperature setting</b><br>The actual temperature value in degrees Celsius (e.g. 008, 020).   | <b>M n3</b>       |
| <b>M</b>            | <b>6411</b>              | <b>Measure unit qualifier</b><br>Indication of the unit of measurement in which weight (mass), capacity, length, area, volume or other quantity is expressed.<br>CEL Celsius               | <b>M an..3</b>    |

**Segment:** **RNG** Range Details  
**Position:** 0920  
**Group:** Segment Group 18 (Goods Item Details) Optional (Required)  
**Level:** 2  
**Usage:** Optional (Optional)  
**Max Use:** 1  
**Purpose:** A segment to specify a temperature range setting for a goods item.

**Dependency Notes:**

**Semantic Notes:**

**Comments:**

**Notes:** For INTTRA/GTNexus, the temperature can only be provided on container level (FTX segment in EQD group) - only in case of a reefer container  
  
 Temperatures should only be expressed to one decimal place.  
  
 Example: RNG+5+CEL:15:18'

**Data Element Summary**

|   | <u>Data Element</u> | <u>Component Element</u> | <u>Name</u>  | <u>Attributes</u> |
|---|---------------------|--------------------------|--|-------------------|
| M | 6167                |                          | <b>RANGE TYPE QUALIFIER</b><br>Identification of the type of range.<br>5 Temperature range<br>The range of a temperature.  | M an..3           |
| M | C280                |                          | <b>RANGE</b><br>Range minimum and maximum limits.  | M                 |
| M |                     | 6411                     | <b>Measure unit qualifier</b><br>Indication of the unit of measurement in which weight (mass), capacity, length, area, volume or other quantity is expressed.<br>CEL Celsius | M an..3           |
| M |                     | 6162                     | <b>Range minimum</b><br>Minimum of a range.  | M n..18           |
| M |                     | 6152                     | <b>Range maximum</b><br>Maximum of a range.  | M n..18           |

**Segment:** **MOA** Monetary Amount  
**Position:** 0950  
**Group:** Segment Group 18 (Goods Item Details) Optional (Required)  
**Level:** 2  
**Usage:** Optional (Optional)  
**Max Use:** 9  
**Purpose:** A segment to specify a monetary amount associated with a goods item, such as declared value, FOB value, etc.

**Dependency Notes:**

**Semantic Notes:**

**Comments:**

**Notes:**

Not to be used for INTTRA/GTNexus.  
 For INTTRA this segment can only be used on header level.

Example: MOA+44:17500:EUR'

**Data Element Summary**

| <b>Data Element</b> | <b>Component Element</b> | <b>Name</b>   | <b>Attributes</b> |
|---------------------|--------------------------|---|-------------------|
| M                   | C516                     | <b>MONETARY AMOUNT</b><br>Amount of goods or services stated as a monetary amount in a specified currency.  | M                 |
| M                   | 5025                     | <b>Monetary amount type qualifier</b><br>Indication of type of amount.  | M an..3           |
|                     | 44                       | Declared value for carriage (5036) Value, declared by the shipper or his agent solely for the purpose of varying the carrier's level of liability from that provided in the contract of carriage, in case of loss or damage to goods or delayed delivery. |                   |
| M                   | 5004                     | <b>Monetary amount</b><br>Number of monetary units.   | M n..18           |
|                     |                          | The recommended format is I10.D5 (10 integers, 5 decimals) using an explicit decimal point. No leading or trailing zeroes are necessary (e.g. 122332.235 or 12565).   |                   |
| M                   | 6345                     | <b>Currency, coded</b><br>Identification of the name or symbol of the monetary unit involved in the transaction.<br>ISO 4217  | M an..3           |
|                     | 6343                     | <b>Currency qualifier</b><br>Code giving specific meaning to data element 6345 Currency.<br>Refer to D.97A Data Element Dictionary for acceptable code values.  | X an..3           |
|                     | 4405                     | <b>Status, coded</b><br>Provides information regarding a status.<br>Refer to D.97A Data Element Dictionary for acceptable code values.  | X an..3           |

**Segment:** **PIA** Additional Product Id  
**Position:** 0960  
**Group:** Segment Group 18 (Goods Item Details) Optional (Required)  
**Level:** 2  
**Usage:** Optional (Optional)  
**Max Use:** 9  
**Purpose:** A segment to specify article numbers.

**Dependency Notes:**

**Semantic Notes:**

**Comments:**

**Notes:**

This segment is used to indicate the Harmonised System Code.

Mandatory for INTTRA in case of destination US, Canada or Israël.

#### Data Element Summary

|   | <u>Data Element</u> | <u>Component Element</u> | <u>Name</u>  | <u>Attributes</u> |
|---|---------------------|--------------------------|--|-------------------|
| M | 4347                |                          | <b>PRODUCT ID. FUNCTION QUALIFIER</b><br>Indication of the function of the product code.<br>5 Product identification   | M an..3           |
| M | C212                |                          | <b>ITEM NUMBER IDENTIFICATION</b><br>Goods identification for a specified source.  | M                 |
|   |                     | 7140                     | <b>Item number</b><br>A number allocated to a group or item.   | C an..35          |
|   |                     | 7143                     | <b>Item number type, coded</b><br>Identification of the type of item number.<br>HS Harmonised system   | C an..3           |
| X |                     | 1131                     | <b>Code list qualifier</b><br>Identification of a code list.<br>Refer to D.97A Data Element Dictionary for acceptable code values.   | X an..3           |
| X |                     | 3055                     | <b>Code list responsible agency, coded</b><br>Code identifying the agency responsible for a code list.<br>Refer to D.97A Data Element Dictionary for acceptable code values. | X an..3           |
|   | C212                |                          | <b>ITEM NUMBER IDENTIFICATION</b><br>Goods identification for a specified source.  | X                 |
| X |                     | 7140                     | <b>Item number</b><br>A number allocated to a group or item.   | X an..35          |
| X |                     | 7143                     | <b>Item number type, coded</b><br>Identification of the type of item number.<br>Refer to D.97A Data Element Dictionary for acceptable code values.                           | X an..3           |
| X |                     | 1131                     | <b>Code list qualifier</b><br>Identification of a code list.<br>Refer to D.97A Data Element Dictionary for acceptable code values.   | X an..3           |
| X |                     | 3055                     | <b>Code list responsible agency, coded</b>   | X an..3           |

|          |             |  |          |               |
|----------|-------------|--|----------|---------------|
|          |             | Code identifying the agency responsible for a code list.<br>Refer to D.97A Data Element Dictionary for acceptable code values. |          |               |
|          | <b>C212</b> | <b>ITEM NUMBER IDENTIFICATION</b>  | <b>X</b> |               |
|          |             | Goods identification for a specified source.   |          |               |
| <b>X</b> | <b>7140</b> | <b>Item number</b>   | <b>X</b> | <b>an..35</b> |
|          |             | A number allocated to a group or item.   |          |               |
| <b>X</b> | <b>7143</b> | <b>Item number type, coded</b>   | <b>X</b> | <b>an..3</b>  |
|          |             | Identification of the type of item number.<br>Refer to D.97A Data Element Dictionary for acceptable code values.               |          |               |
| <b>X</b> | <b>1131</b> | <b>Code list qualifier</b>   | <b>X</b> | <b>an..3</b>  |
|          |             | Identification of a code list.<br>Refer to D.97A Data Element Dictionary for acceptable code values.                           |          |               |
| <b>X</b> | <b>3055</b> | <b>Code list responsible agency, coded</b>   | <b>X</b> | <b>an..3</b>  |
|          |             | Code identifying the agency responsible for a code list.<br>Refer to D.97A Data Element Dictionary for acceptable code values. |          |               |
|          | <b>C212</b> | <b>ITEM NUMBER IDENTIFICATION</b>  | <b>X</b> |               |
|          |             | Goods identification for a specified source.   |          |               |
| <b>X</b> | <b>7140</b> | <b>Item number</b>   | <b>X</b> | <b>an..35</b> |
|          |             | A number allocated to a group or item.   |          |               |
| <b>X</b> | <b>7143</b> | <b>Item number type, coded</b>   | <b>X</b> | <b>an..3</b>  |
|          |             | Identification of the type of item number.<br>Refer to D.97A Data Element Dictionary for acceptable code values.               |          |               |
| <b>X</b> | <b>1131</b> | <b>Code list qualifier</b>   | <b>X</b> | <b>an..3</b>  |
|          |             | Identification of a code list.<br>Refer to D.97A Data Element Dictionary for acceptable code values.                           |          |               |
| <b>X</b> | <b>3055</b> | <b>Code list responsible agency, coded</b>   | <b>X</b> | <b>an..3</b>  |
|          |             | Code identifying the agency responsible for a code list.<br>Refer to D.97A Data Element Dictionary for acceptable code values. |          |               |
|          | <b>C212</b> | <b>ITEM NUMBER IDENTIFICATION</b>  | <b>X</b> |               |
|          |             | Goods identification for a specified source.   |          |               |
| <b>X</b> | <b>7140</b> | <b>Item number</b>   | <b>X</b> | <b>an..35</b> |
|          |             | A number allocated to a group or item.   |          |               |
| <b>X</b> | <b>7143</b> | <b>Item number type, coded</b>   | <b>X</b> | <b>an..3</b>  |
|          |             | Identification of the type of item number.<br>Refer to D.97A Data Element Dictionary for acceptable code values.               |          |               |
| <b>X</b> | <b>1131</b> | <b>Code list qualifier</b>   | <b>C</b> | <b>an..3</b>  |
|          |             | Identification of a code list.<br>Refer to D.97A Data Element Dictionary for acceptable code values.                           |          |               |
| <b>X</b> | <b>3055</b> | <b>Code list responsible agency, coded</b>   | <b>C</b> | <b>an..3</b>  |
|          |             | Code identifying the agency responsible for a code list.<br>Refer to D.97A Data Element Dictionary for acceptable code values. |          |               |

**Segment:** **FTX** Free Text  
**Position:** 0970  
**Group:** Segment Group 18 (Goods Item Details)      Optional (Required)  
**Level:** 2  
**Usage:** Mandatory  
**Max Use:** 99  
**Purpose:** A segment to specify processable supplementary information relating to the goods item.

**Dependency Notes:**

**Semantic Notes:**

**Comments:**

**Notes:**

If data element 4451 equals 'AAA' it is recommended that each occurrence of data element 4440 is limited to the length of the UN layout key i.e. an..26. This guarantees a correct layout on the document (no line wrapping).

The FTX-segment with qualifier SIN should only be used in case of layout type 3, 4, 8 or 9 (conventional goods). In this case data element 4440 will have the value 'end of conventional items'.

The qualifier CCI is only used in case the "Single Message Indicator" (see FTX/DOC on header) has been sent, which means that this is a consolidation shipment where details of house B/Ls and filing information are sent on GID detail level (only INTTRA). The qualifier CCI is not printed, but used for Customs Clearance Instructions.

Example: FTX+AAA+++FROZEN SHRIMP'

Extra information US/Canada requirements for qualifier CCI (only INTTRA):

For export to US and Canada:

When Port of Discharge is a US or Canadian port, Manifest Filer Status (MFS) and Manifest Filing Country are mandatory at the Header level:

Example:

FTX+CCI++MFS+5:US

or

FTX+CCI++MFS+1:US:SCAC

If Manifest Filer Status is Self (1), then Manifest Filer Identification C108, 4440(3) is mandatory.

FROB (Freight Remaining On Board) Cargo through US or Canada:

- a. For FROB cargo through the US, eg., Antwerp -> US -> Santos, it is recommended that customers provide Filer Status (Self or Carrier) for Manifest Filing Country US
- b. For FROB cargo through Canada, eg., Antwerp-> Montreal -> New York, it is recommended that customers provide Filer Status (Self or Carrier) for Manifest Filing Country CA (Canada).
- c. Filer status should NOT be provided for FROB cargo NOT involving US or CA

**Data Element Summary**

| <u>Data Element</u> | <u>Component Element</u> | <u>Name</u> | <u>Attributes</u> |
|---------------------|--------------------------|-------------|-------------------|
|---------------------|--------------------------|-------------|-------------------|

|   |      |   |          |
|---|------|---|----------|
| M | 4451 | <b>TEXT SUBJECT QUALIFIER</b><br>Code specifying subject of a free text.  | M an..3  |
|   |      | AAA Goods description<br>[7002] Plain language description of the nature of the goods sufficient to identify them at the level required for banking, Customs, statistical or transport purposes, avoiding unnecessary detail (Generic term).      |          |
|   |      | CCI Customs clearance instructions<br>Any coded or clear instruction agreed by customer and carrier regarding the declaration of the goods.   |          |
|   |      | SIN Special instructions<br>Special instructions like licence no, high value, handle with care, glass.  |          |
|   | 4453 | <b>TEXT FUNCTION, CODED</b><br>Code specifying how to handle the text.<br>Refer to D.97A Data Element Dictionary for acceptable code values.  | X an..3  |
|   | C107 | <b>TEXT REFERENCE</b><br>Coded reference to a standard text and its source.   | X        |
|   | 4441 | <b>Free text identification</b><br>Free text in coded form.<br>Qualifier MFS is only used in case of qualifier CCI in 4451.   | X an..17 |
|   |      | MFS Manifest Filer Status   |          |
| X | 1131 | <b>Code list qualifier</b><br>Identification of a code list.<br>Refer to D.97A Data Element Dictionary for acceptable code values.  | X an..3  |
| X | 3055 | <b>Code list responsible agency, coded</b><br>Code identifying the agency responsible for a code list.<br>Refer to D.97A Data Element Dictionary for acceptable code values.  | X an..3  |
|   | C108 | <b>TEXT LITERAL</b><br>Free text; one to five lines.  | O        |
| M | 4440 | <b>Free text</b><br>Free text field available to the message sender for information.<br>In case of qualifier CCI the values are:<br>1: Self-filing, meaning that the forwarder or shipper does the manifest filing.<br>5: Carrier manifest filing | M an..26 |
|   | 4440 | <b>Free text</b><br>Free text field available to the message sender for information.<br>In case of qualifier CCI: manifest filing country (ISO 2-character country code).<br>Mandatory in case manifest filing status is provided.                | O an..26 |
|   | 4440 | <b>Free text</b><br>Free text field available to the message sender for information.<br>In case of qualifier CCI: manifest filer identification, more specially the SCAC code, only in case of self-filing code 1 in element 4440#1.              | O an..26 |
|   | 4440 | <b>Free text</b><br>Free text field available to the message sender for information.  | O an..26 |



|             |             |  |          |               |
|-------------|-------------|--|----------|---------------|
|             | <b>4440</b> | <b>Free text</b>   | <b>O</b> | <b>an..26</b> |
|             |             | Free text field available to the message sender for information. |          |               |
| <b>3453</b> |             | <b>LANGUAGE, CODED</b>   | <b>X</b> | <b>an..3</b>  |
|             |             | Code of language (ISO 639-1988).                                 |          |               |

**Group:** **NAD** Segment Group 19: Name and Address  
**Position:** 0980  
**Group:** Segment Group 18 (Goods Item Details) Optional (Required)  
**Level:** 2  
**Usage:** Conditional (Optional)  
**Max Use:** 9  
**Purpose:** A group of segments to identify different places of collection and/or delivery for the goods item.

**Segment Summary**

|   | <b>Pos.</b> | <b>Seg.</b> |                  | <b>Req.</b> | <b>Max.</b> | <b>Group:</b> |
|---|-------------|-------------|------------------|-------------|-------------|---------------|
|   | <b>No.</b>  | <b>ID</b>   | <b>Name</b>      | <b>Des.</b> | <b>Use</b>  | <b>Repeat</b> |
| M | 0990        | NAD         | Name and Address | M           | 1           |               |

**Segment:** **NAD** Name and Address  
**Position:** 0990 (Trigger Segment)  
**Group:** Segment Group 19 (Name and Address) Conditional (Optional)  
**Level:** 2  
**Usage:** Mandatory  
**Max Use:** 1  
**Purpose:** A segment to specify an address of a place of collection or delivery for a goods item.

**Dependency Notes:**

**Semantic Notes:**

**Comments:**

**Notes:**

Only to be used in case of Customs specific requirements (only INTTRA).  
Please see also the qualifiers EX and GO on NAD heading.

Export to US or Canada (only INTTRA):

a. When Port of Discharge (0520LOC) is a US port and Single Message Indicator is sent, then Manifest Filing Country = US must be provided.  
b. When Port of Discharge (0520LOC) is a Canadian port and Single Message Indicator is sent, then Manifest Filing Country CA must be provided.  
c. If Filer status (0990FTX) is Carrier (5) for Manifest Filing Country = US or CA , then name and address must be provided for the following parties :  
OS Original Shipper  
UC Ultimate Consignee  
d. If Filer status is Self (1), Requestor must not provide name and address for OS and UC parties.

**Data Element Summary**

|   | <u>Data Element</u> | <u>Component Element</u> | <u>Name</u>   | <u>Attributes</u> |
|---|---------------------|--------------------------|---|-------------------|
| M | 3035                |                          | <b>PARTY QUALIFIER</b><br>Code giving specific meaning to a party.<br>OS Original shipper<br>The original supplier of the goods.<br>UC Ultimate consignee<br>Party who has been designated on the invoice or packing list as the final recipient of the stated merchandise. | M an..3           |
| X | C082                |                          | <b>PARTY IDENTIFICATION DETAILS</b><br>Identification of a transaction party by code.   | C                 |
| X |                     | 3039                     | <b>Party id. identification</b><br>Code identifying a party involved in a transaction.  | M an..35          |
| X |                     | 1131                     | <b>Code list qualifier</b><br>Identification of a code list.<br>Refer to D.97A Data Element Dictionary for acceptable code values.  | C an..3           |
| X |                     | 3055                     | <b>Code list responsible agency, coded</b><br>Code identifying the agency responsible for a code list.<br>Refer to D.97A Data Element Dictionary for acceptable code values.  | C an..3           |
|   | C058                |                          | <b>NAME AND ADDRESS</b><br>Unstructured name and address: one to five lines.  | C                 |

|   |             |             |   |   |        |
|---|-------------|-------------|---|---|--------|
| M |             | <b>3124</b> | <b>Name and address line</b><br>Free form name and address description.   | M | an..35 |
|   |             | <b>3124</b> | <b>Name and address line</b><br>Free form name and address description.   | C | an..35 |
|   |             | <b>3124</b> | <b>Name and address line</b><br>Free form name and address description.   | C | an..35 |
|   |             | <b>3124</b> | <b>Name and address line</b><br>Free form name and address description.   | C | an..35 |
|   |             | <b>3124</b> | <b>Name and address line</b><br>Free form name and address description.   | C | an..35 |
| X | <b>C080</b> |             | <b>PARTY NAME</b><br>Identification of a transaction party by name, one to five lines. Party name may be formatted.   | C |        |
| X |             | <b>3036</b> | <b>Party name</b><br>Name of a party involved in a transaction.   | M | an..35 |
| X |             | <b>3036</b> | <b>Party name</b><br>Name of a party involved in a transaction.   | C | an..35 |
| X |             | <b>3036</b> | <b>Party name</b><br>Name of a party involved in a transaction.   | C | an..35 |
| X |             | <b>3036</b> | <b>Party name</b><br>Name of a party involved in a transaction.   | C | an..35 |
| X |             | <b>3036</b> | <b>Party name</b><br>Name of a party involved in a transaction.   | C | an..35 |
| X |             | <b>3045</b> | <b>Party name format, coded</b><br>Specification of the representation of a party name.<br>Refer to D.97A Data Element Dictionary for acceptable code values. | C | an..3  |
| X | <b>C059</b> |             | <b>STREET</b><br>Street address and/or PO Box number in a structured address: one to three lines.   | C |        |
| X |             | <b>3042</b> | <b>Street and number/p.o. box</b><br>Street and number in plain language, or Post Office Box No.  | M | an..35 |
| X |             | <b>3042</b> | <b>Street and number/p.o. box</b><br>Street and number in plain language, or Post Office Box No.  | C | an..35 |
| X |             | <b>3042</b> | <b>Street and number/p.o. box</b><br>Street and number in plain language, or Post Office Box No.  | C | an..35 |
| X |             | <b>3042</b> | <b>Street and number/p.o. box</b><br>Street and number in plain language, or Post Office Box No.  | C | an..35 |
| X | <b>3164</b> |             | <b>CITY NAME</b><br>Name of a city (a town, a village) for addressing purposes.   | C | an..35 |
| X | <b>3229</b> |             | <b>COUNTRY SUB-ENTITY IDENTIFICATION</b><br>Identification of the name of sub-entities (state, province) defined by appropriate governmental agencies.        | C | an..9  |
| X | <b>3251</b> |             | <b>POSTCODE IDENTIFICATION</b><br>Code defining postal zones or addresses.  | C | an..9  |
| X | <b>3207</b> |             | <b>COUNTRY, CODED</b>   | C | an..3  |

Identification of the name of a country or other geographical entity as specified in ISO 3166.

**Group:** **MEA** Segment Group 20: Measurements  
**Position:** 1020  
**Group:** Segment Group 18 (Goods Item Details) Optional (Required)  
**Level:** 2  
**Usage:** Mandatory  
**Max Use:** 99  
**Purpose:** A group of segments to specify measurements applicable to a goods item.  
**Notes:** Only the gross weight is mandatory.

**Segment Summary**

|   | <u>Pos. No.</u> | <u>Seg. ID</u> | <u>Name</u>  | <u>Req. Des.</u> | <u>Max. Use</u> | <u>Group: Repeat</u> |
|---|-----------------|----------------|--------------|------------------|-----------------|----------------------|
| M | 1030            | MEA            | Measurements | M                | 1               |                      |

**Segment:** **MEA** Measurements  
**Position:** 1030 (Trigger Segment)  
**Group:** Segment Group 20 (Measurements) Mandatory  
**Level:** 2  
**Usage:** Mandatory  
**Max Use:** 1  
**Purpose:** A segment to specify measurements, other than dimensions, applicable to a goods item.

**Dependency Notes:**

**Semantic Notes:**

**Comments:**

**Notes:**

This segment is mandatory for the gross weight.

Example: MEA+AAE+G+KGM:36000'

Export to Brazil (Customs requirements):

When Port of Discharge or Port of Load (0520LOC) is a Brazilian port, the following units of measurement must be provided:  
 Cargo Gross weight in kilograms  
 Cargo Gross volume in cubic meters

**Data Element Summary**

|   | <u>Data Element</u> | <u>Component Element</u> | <u>Name</u>   | <u>Attributes</u> |
|---|---------------------|--------------------------|---|-------------------|
| M | 6311                |                          | <b>MEASUREMENT PURPOSE QUALIFIER</b><br>Specification of the purpose of the measurement.<br>AAE Measurement<br>[6314] Value of the measured unit.   | M an..3           |
| M | C502                |                          | <b>MEASUREMENT DETAILS</b><br>Identification of measurement type.   | M                 |
| M |                     | 6313                     | <b>Property measured, coded</b><br>Specification of the property measured.<br>By default this code determines the measurement value to be applied to one single unit. "Gross weight" relates to the total gross weight of a number of despatch units in the goods item. | M an..3           |
|   |                     |                          | AAL Net weight<br>[6160] Weight (mass) of goods including any packing normally going with them to a buyer in a retail sale.   |                   |
|   |                     |                          | ABJ Volume<br>The amount of air space taken up by the entity identified in the 6311 qualifier.  |                   |
|   |                     |                          | G Gross weight<br>[6292] Weight (mass) of goods including packing but excluding the carrier's equipment.  |                   |
|   |                     | 6321                     | <b>Measurement significance, coded</b><br>Code specifying the significance of a measurement value.<br>Refer to D.97A Data Element Dictionary for acceptable code values.  | X an..3           |
|   |                     | 6155                     | <b>Measurement attribute identification</b>   | X an..17          |

|          |             |             |  |                 |
|----------|-------------|-------------|--|-----------------|
|          |             |             | Code used to specify non-discrete measurement values.<br>Refer to D.97A Data Element Dictionary for acceptable code values.                          |                 |
|          |             | <b>6154</b> | <b>Measurement attribute</b>   | <b>X an..70</b> |
| <b>M</b> | <b>C174</b> |             | To specify non-discrete measurement values.<br><b>VALUE/RANGE</b>  | <b>M</b>        |
|          |             |             | Measurement value and relevant minimum and maximum tolerances in that order.   |                 |
| <b>M</b> |             | <b>6411</b> | <b>Measure unit qualifier</b>  | <b>M an..3</b>  |
|          |             |             | Indication of the unit of measurement in which weight (mass), capacity, length, area, volume or other quantity is expressed.                         |                 |
|          |             |             | FTQ                      Cubic feet  |                 |
|          |             |             | KGM                      Kilograms   |                 |
|          |             |             | LBR                      Pounds  |                 |
|          |             |             | MTQ                      Cubic metres  |                 |
|          |             |             | MTR                      Metres  |                 |
| <b>M</b> |             | <b>6314</b> | <b>Measurement value</b>   | <b>M an..18</b> |
|          |             |             | Value of the measured unit.<br>Weight or volume.   |                 |
|          |             |             | For weights the recommended format is I11.D4 (11 integers, 4 decimals) using an explicit decimal point. No leading or trailing zeroes are necessary. |                 |
|          |             |             | For volumes the recommended format is I9.D6 (9 integers, 6 decimals) using an explicit decimal point. No leading or trailing zeroes are necessary.   |                 |
|          |             | <b>6162</b> | <b>Range minimum</b>   | <b>X n..18</b>  |
|          |             |             | Minimum of a range.  |                 |
|          |             | <b>6152</b> | <b>Range maximum</b>   | <b>X n..18</b>  |
|          |             |             | Maximum of a range.  |                 |
|          |             | <b>6432</b> | <b>Significant digits</b>  | <b>X n..2</b>   |
|          |             |             | To specify the number of significant digits.   |                 |
|          | <b>7383</b> |             | <b>SURFACE/LAYER INDICATOR, CODED</b>  | <b>X an..3</b>  |
|          |             |             | Code indicating the surface or layer of a product that is being described.<br>Refer to D.97A Data Element Dictionary for acceptable code values.     |                 |



**Group:** **RFF** Segment Group 22: Reference  
**Position:** 1080  
**Group:** Segment Group 18 (Goods Item Details) Optional (Required)  
**Level:** 2  
**Usage:** Optional (Optional)  
**Max Use:** 9  
**Purpose:** A group of segments to identify references to a goods item.

**Segment Summary**

|   | <u>Pos.</u> | <u>Seg.</u> |             | <u>Req.</u> | <u>Max.</u> | <u>Group:</u> |
|---|-------------|-------------|-------------|-------------|-------------|---------------|
|   | <u>No.</u>  | <u>ID</u>   | <u>Name</u> | <u>Des.</u> | <u>Use</u>  | <u>Repeat</u> |
| M | 1090        | RFF         | Reference   | M           | 1           |               |

**Segment:** **RFF** Reference  
**Position:** 1090 (Trigger Segment)  
**Group:** Segment Group 22 (Reference) Optional (Optional)  
**Level:** 2  
**Usage:** Mandatory  
**Max Use:** 1  
**Purpose:** A segment to identify a reference to a goods item.

**Dependency Notes:**

**Semantic Notes:**

**Comments:**

**Notes:**

The possibility exists that for one B/L several booking reference numbers and/or several conference contract numbers can be given.

To demonstrate the link between the reference numbers and the concerned goods item, the RFF segment is repeated on this level in the GID group. However, the booking reference number cannot be repeated within the GID group and the reference must also be provided in the RFF segment on header level.

The qualifier ED is for future use.

The qualifier ON is only used in case you have a different purchase order per commodity. If this is not the case, the RFF/ON on heading is used.

Specific for INTTRA:

When Single Message Indicator is activated (FTX+DOC with indicator SMI), House Bill Number (BH) must be provided for each commodity.

Example: RFF+BN:PO12345/05'

Specific for export to Brazil (only INTTRA):

When Port of Discharge is a Brazilian port, the following must be provided for each commodity: ABT NCM (Nomenclature Comum do Mercosul) commodity code. Per GID the RFF/ABT can occur 140 times.

NCM codes (NCM=Nomenclatura Comum do Mercosul) are made of the HS CODE + 4 digits

Example:

HS Code : 760910

NCM code : 76091010.00

The final 4 digits can change.

There is a web site dedicated to the NCM numbers:

<http://www.braziltradenet.gov.br/classificacaoncm/pesquisa/frmPesqNCM.aspx?cod=00>

**Data Element Summary**

|   | <u>Data Element</u> | <u>Component Element</u> | <u>Name</u>   | <u>Attributes</u> |
|---|---------------------|--------------------------|---|-------------------|
| M | C506                |                          | <b>REFERENCE</b><br>Identification of a reference.  | M                 |
| M |                     | 1153                     | <b>Reference qualifier</b><br>Code giving specific meaning to a reference segment or a reference number.  | M an..3           |
|   |                     |                          | ABT<br>Customs declaration number<br>[1426] Number, assigned or accepted by Customs, to identify a Goods declaration.<br>NCM code.  |                   |
|   |                     |                          | BH<br>House bill of lading number<br>Reference number assigned to a house bill of lading, see: 1001 = 714.<br>Only used in case Single Message Indicator is activated (only INTTRA) |                   |
|   |                     |                          | BN<br>Booking reference number<br>[1016] Reference number assigned by the carrier or his agent when cargo space is reserved prior to loading.                                       |                   |
|   |                     |                          | CT<br>Contract number<br>Reference number of a contract concluded between parties.  |                   |
|   |                     |                          | ED<br>Export declaration<br>Number assigned by the exporter to his export declaration number submitted to an authority.<br>Export declaration type.                                 |                   |
|   |                     |                          | ON<br>Order number (purchase)<br>[1022] Reference number assigned by the buyer to an order.   |                   |
| M |                     | 1154                     | <b>Reference number</b><br>Identification number the nature and function of which can be qualified by an entry in data element 1153 Reference qualifier.                            | M an..35          |
| X |                     | 1156                     | <b>Line number</b><br>Number of the line in the document/message referenced in 1154 Reference number.   | X an..6           |
| X |                     | 4000                     | <b>Reference version number</b><br>To uniquely identify a reference by its revision number.   | X an..35          |

**Group:** **PCI** Segment Group 23: Package Identification  
**Position:** 1110  
**Group:** Segment Group 18 (Goods Item Details) Optional (Required)  
**Level:** 2  
**Usage:** Optional (Advised)  
**Max Use:** 999  
**Purpose:** A group of segments to specify marks and numbers of a goods item.  
**Notes:** This group is recommended to be used at least once. If there are no specific marks and numbers on the item level, the group can be left out for that good item. If there are no marks and numbers on the level of the whole consignment, the group can be left out for gooditem 0 (see remarks GID).

**Segment Summary**

|   | <b>Pos.</b> | <b>Seg.</b> |                        | <b>Req.</b> | <b>Max.</b> | <b>Group:</b> |
|---|-------------|-------------|------------------------|-------------|-------------|---------------|
|   | <b>No.</b>  | <b>ID</b>   | <b>Name</b>            | <b>Des.</b> | <b>Use</b>  | <b>Repeat</b> |
| M | 1120        | PCI         | Package Identification | M           | 1           |               |

**Segment:** **PCI** Package Identification  
**Position:** 1120 (Trigger Segment)  
**Group:** Segment Group 23 (Package Identification)      Optional (Advised)  
**Level:** 2  
**Usage:** Mandatory  
**Max Use:** 1  
**Purpose:** A segment to specify marks and numbers of a goods item.

**Dependency Notes:**

**Semantic Notes:**

**Comments:**

**Notes:** If "marks and numbers" are related to the whole consignment, the qualifier 23 can be used in data element 4233.

Example: PCI+23+B1-B250'

**Data Element Summary**

| <u>Data Element</u> | <u>Component Element</u> | <u>Name</u>  | <u>Attributes</u> |
|---------------------|--------------------------|--|-------------------|
| 4233                |                          | <b>MARKING INSTRUCTIONS, CODED</b>   | <b>O an..3</b>    |
|                     |                          | Code indicating instructions on how specified packages or physical units should be marked. |                   |
|                     | 23                       | Entire shipment  |                   |
|                     |                          | Markings refer to the entire shipment.   |                   |
|                     | 24                       | Shipper assigned   |                   |
|                     |                          | Markings to identify a shipment, package or carton as assigned by shipper.                 |                   |
| <b>M</b>            | <b>C210</b>              | <b>MARKS &amp; LABELS</b>  | <b>M</b>          |
|                     |                          | Shipping marks on packages in free text; one to ten lines.                                 |                   |
| <b>M</b>            | <b>7102</b>              | <b>Shipping marks</b>  | <b>M an..17</b>   |
|                     |                          | Marks and numbers identifying individual packages.   |                   |
|                     |                          | In conformance with the UN Layout Key the data format is an..17.                           |                   |
|                     | <b>7102</b>              | <b>Shipping marks</b>  | <b>O an..17</b>   |
|                     |                          | Marks and numbers identifying individual packages.   |                   |
|                     |                          | In conformance with the UN Layout Key the data format is an..17.                           |                   |
|                     | <b>7102</b>              | <b>Shipping marks</b>  | <b>O an..17</b>   |
|                     |                          | Marks and numbers identifying individual packages.   |                   |
|                     |                          | In conformance with the UN Layout Key the data format is an..17.                           |                   |
|                     | <b>7102</b>              | <b>Shipping marks</b>  | <b>O an..17</b>   |
|                     |                          | Marks and numbers identifying individual packages.   |                   |
|                     |                          | In conformance with the UN Layout Key the data format is an..17.                           |                   |
|                     | <b>7102</b>              | <b>Shipping marks</b>  | <b>O an..17</b>   |
|                     |                          | Marks and numbers identifying individual packages.   |                   |
|                     |                          | In conformance with the UN Layout Key the data format is an..17.                           |                   |

|      |  |   |                 |
|------|--|---|-----------------|
|      |  | In conformance with the UN Layout Key the data format is an..17.  |                 |
| 7102 | <b>Shipping marks</b>                      |   | <b>O an..17</b> |
|      |  | Marks and numbers identifying individual packages.  |                 |
|      |  | In conformance with the UN Layout Key the data format is an..17.  |                 |
| 7102 | <b>Shipping marks</b>                      |   | <b>O an..17</b> |
|      |  | Marks and numbers identifying individual packages.  |                 |
|      |  | In conformance with the UN Layout Key the data format is an..17.  |                 |
| 7102 | <b>Shipping marks</b>                      |   | <b>O an..17</b> |
|      |  | Marks and numbers identifying individual packages.  |                 |
|      |  | In conformance with the UN Layout Key the data format is an..17.  |                 |
| 7102 | <b>Shipping marks</b>                      |   | <b>O an..17</b> |
|      |  | Marks and numbers identifying individual packages.  |                 |
|      |  | In conformance with the UN Layout Key the data format is an..17.  |                 |
| 8275 | <b>CONTAINER/PACKAGE STATUS, CODED</b>     |   | <b>X an..3</b>  |
|      |  | Code to identify whether goods of separate description or comprising separate consignments are contained in the same external packaging or to indicate that a container or similar unit load device is empty. |                 |
|      |  | Refer to D.97A Data Element Dictionary for acceptable code values.  |                 |
| C827 | <b>TYPE OF MARKING</b>                     |   | <b>X</b>        |
|      |  | Specification of the type of marking that reflects the method that was used and the conventions adhered to for marking (e.g. of packages).  |                 |
| 7511 | <b>Type of marking, coded</b>              |   | <b>X an..3</b>  |
|      |  | To specify the type of marking that reflects the method and the conventions adhered to for marking.   |                 |
| 1131 | <b>Code list qualifier</b>                 |   | <b>X an..3</b>  |
|      |  | Identification of a code list.  |                 |
|      |  | Refer to D.97A Data Element Dictionary for acceptable code values.  |                 |
| 3055 | <b>Code list responsible agency, coded</b> |   | <b>X an..3</b>  |
|      |  | Code identifying the agency responsible for a code list.  |                 |
|      |  | Refer to D.97A Data Element Dictionary for acceptable code values.  |                 |

**Group:** **SGP** Segment Group 29: Split Goods Placement  
**Position:** 1330  
**Group:** Segment Group 18 (Goods Item Details) Optional (Required)  
**Level:** 2  
**Usage:** Optional (Dependent)  
**Max Use:** 999  
**Purpose:** A group of segments to specify the distribution of a goods item among the transport equipment.  
**Notes:** If containerised goods are transported, this segment is mandatory.

**Segment Summary**

|   | <u>Pos. No.</u> | <u>Seg. ID</u> | <u>Name</u>                    | <u>Req. Des.</u> | <u>Max. Use</u> | <u>Group: Repeat</u> |
|---|-----------------|----------------|--------------------------------|------------------|-----------------|----------------------|
| M | 1340            | SGP            | Split Goods Placement          | M                | 1               |                      |
|   | 1350            |                | Segment Group 30: Measurements | O                |                 | 9                    |

**Segment:** **SGP** Split Goods Placement  
**Position:** 1340 (Trigger Segment)  
**Group:** Segment Group 29 (Split Goods Placement) Optional (Dependent)  
**Level:** 2  
**Usage:** Mandatory  
**Max Use:** 1  
**Purpose:** A segment to identify the equipment in which goods are transported.

**Dependency Notes:**

**Semantic Notes:**

**Comments:**

**Notes:**

Segment SGP must always be used in case of containerized goods in order to indicate the link between the goods items and the equipment container.

The number provided in data element 8260 in the SGP segment should always match one of the transport equipment numbers specified in data element 8260 within the EQD segment.

Data element 7224 should always be used. It relates to the number of outer packages (lowest external packaging unit).

Example: SGP+ABCU546689+500'

**Data Element Summary**

| <u>Data Element</u> | <u>Component Element</u> | <u>Name</u>  | <u>Attributes</u> |
|---------------------|--------------------------|--|-------------------|
| M                   | C237                     | <b>EQUIPMENT IDENTIFICATION</b><br>Marks (letters and/or numbers) identifying equipment used for transport such as a container.  | <b>M</b>          |
| M                   | 8260                     | <b>Equipment identification number</b><br>Marks (letters and/or numbers) which identify equipment e.g. unit load device.   | <b>M an..17</b>   |
|                     | 1131                     | <b>Code list qualifier</b><br>Identification of a code list.<br>Refer to D.97A Data Element Dictionary for acceptable code values.   | <b>X an..3</b>    |
|                     | 3055                     | <b>Code list responsible agency, coded</b><br>Code identifying the agency responsible for a code list.<br>Refer to D.97A Data Element Dictionary for acceptable code values.   | <b>X an..3</b>    |
|                     | 3207                     | <b>Country, coded</b><br>Identification of the name of a country or other geographical entity as specified in ISO 3166.  | <b>X an..3</b>    |
| M                   | 7224                     | <b>NUMBER OF PACKAGES</b><br>Number of individual parts of a shipment either unpacked, or packed in such a way that they cannot be divided without first undoing the packing.<br>The number of packages should relate to the outer packaging (lowest external packaging unit). | <b>M n..8</b>     |



**Group:** **MEA** Segment Group 30: Measurements  
**Position:** 1350  
**Group:** Segment Group 29 (Split Goods Placement) Optional (Dependent)  
**Level:** 3  
**Usage:** Optional (Required)  
**Max Use:** 9  
**Purpose:** A group of segments to identify measurements.  
**Notes:** Only the gross weight is mandatory.

**Segment Summary**

|   | <u>Pos. No.</u> | <u>Seg. ID</u> | <u>Name</u>  | <u>Req. Des.</u> | <u>Max. Use</u> | <u>Group: Repeat</u> |
|---|-----------------|----------------|--------------|------------------|-----------------|----------------------|
| M | 1360            | MEA            | Measurements | M                | 1               |                      |

**Segment:** **MEA** Measurements  
**Position:** 1360 (Trigger Segment)  
**Group:** Segment Group 30 (Measurements)      Optional (Required)  
**Level:** 3  
**Usage:** Mandatory  
**Max Use:** 1  
**Purpose:** A segment to specify measurements of that portion of the goods item in the equipment.  
**Dependency Notes:**  
**Semantic Notes:**  
**Comments:**  
**Notes:** Example: MEA+AAE+G+KGM:36000'

**Data Element Summary**

|   | <u>Data Element</u> | <u>Component Element</u> | <u>Name</u>   | <u>Attributes</u> |
|---|---------------------|--------------------------|---|-------------------|
| M | 6311                |                          | <b>MEASUREMENT PURPOSE QUALIFIER</b><br>Specification of the purpose of the measurement.<br>AAE Measurement<br>[6314] Value of the measured unit.   | <b>M an..3</b>    |
| M | C502                |                          | <b>MEASUREMENT DETAILS</b><br>Identification of measurement type.   | <b>M</b>          |
| M |                     | 6313                     | <b>Property measured, coded</b><br>Specification of the property measured.<br>AAL Net weight<br>[6160] Weight (mass) of goods including any packing normally going with them to a buyer in a retail sale.<br>ABJ Volume<br>The amount of air space taken up by the entity identified in the 6311 qualifier.<br>G Gross weight<br>[6292] Weight (mass) of goods including packing but excluding the carrier's equipment. | <b>M an..3</b>    |
|   |                     | 6321                     | <b>Measurement significance, coded</b><br>Code specifying the significance of a measurement value.<br>Refer to D.97A Data Element Dictionary for acceptable code values.  | <b>X an..3</b>    |
|   |                     | 6155                     | <b>Measurement attribute identification</b><br>Code used to specify non-discrete measurement values.<br>Refer to D.97A Data Element Dictionary for acceptable code values.  | <b>X an..17</b>   |
|   |                     | 6154                     | <b>Measurement attribute</b><br>To specify non-discrete measurement values.   | <b>X an..70</b>   |
| M | C174                |                          | <b>VALUE/RANGE</b><br>Measurement value and relevant minimum and maximum tolerances in that order.  | <b>M</b>          |
| M |                     | 6411                     | <b>Measure unit qualifier</b><br>Indication of the unit of measurement in which weight (mass), capacity, length, area, volume or other quantity is expressed.<br>FTQ Cubic feet   | <b>M an..3</b>    |

|             |             |  |              |                 |
|-------------|-------------|--|--------------|-----------------|
|             |             | KGM  | Kilograms    |                 |
|             |             | LBR  | Pounds       |                 |
|             |             | MTQ  | Cubic metres |                 |
|             |             | MTR  | Metres       |                 |
| <b>M</b>    | <b>6314</b> | <b>Measurement value</b>   |              | <b>M an..18</b> |
|             |             | Value of the measured unit.  |              |                 |
|             |             | Weight or volume.  |              |                 |
|             |             | For weights the recommended format is I11.D4 (11 integers, 4 decimals) using an explicit decimal point. No leading or trailing zeroes are necessary. |              |                 |
|             |             | For volumes the recommended format is I9.D6 (9 integers, 6 decimals) using an explicit decimal point. No leading or trailing zeroes are necessary.   |              |                 |
|             | <b>6162</b> | <b>Range minimum</b>   |              | <b>X n..18</b>  |
|             |             | Minimum of a range.  |              |                 |
|             | <b>6152</b> | <b>Range maximum</b>   |              | <b>X n..18</b>  |
|             |             | Maximum of a range.  |              |                 |
|             | <b>6432</b> | <b>Significant digits</b>  |              | <b>X n..2</b>   |
|             |             | To specify the number of significant digits.   |              |                 |
| <b>7383</b> |             | <b>SURFACE/LAYER INDICATOR, CODED</b>  |              | <b>X an..3</b>  |
|             |             | Code indicating the surface or layer of a product that is being described.   |              |                 |
|             |             | Refer to D.97A Data Element Dictionary for acceptable code values.   |              |                 |

**Group:** **DGS** Segment Group 32: Dangerous Goods  
**Position:** 1470  
**Group:** Segment Group 18 (Goods Item Details) Optional (Required)  
**Level:** 2  
**Usage:** Optional (Optional)  
**Max Use:** 9  
**Purpose:** A group of segments to specify dangerous goods details related to the goods item. One goods item may be in different dangerous goods classes.

**Segment Summary**

|   | <b>Pos. No.</b> | <b>Seg. ID</b> | <b>Name</b>                           | <b>Req. Des.</b> | <b>Max. Use</b> | <b>Group: Repeat</b> |
|---|-----------------|----------------|---------------------------------------|------------------|-----------------|----------------------|
| M | 1480            | DGS            | Dangerous Goods                       | M                | 1               |                      |
|   | 1490            | FTX            | Free Text                             | O                | 99              |                      |
|   | 1500            |                | Segment Group 33: Contact Information | C                |                 | 9                    |

**Segment:** **DGS** Dangerous Goods  
**Position:** 1480 (Trigger Segment)  
**Group:** Segment Group 32 (Dangerous Goods) Optional (Optional)  
**Level:** 2  
**Usage:** Mandatory  
**Max Use:** 1  
**Purpose:** A segment to indicate the class of dangerous goods, packing group, etc.

**Dependency Notes:**

**Semantic Notes:**

**Comments:**

**Notes:**

For goods with a subsidiary risk code, two methodologies are currently applied:

- (a) the DGS segment should be repeated using DE 8273 and DE 8351 only
- (b) subsidiary risk should be shown in the DGS.FTX segment (with qualifier AAD)

Example: DGS+IMD+3.1+1245'

#### Data Element Summary

|   | <u>Data Element</u> | <u>Component Element</u> | <u>Name</u>   | <u>Attributes</u> |
|---|---------------------|--------------------------|---|-------------------|
| M | 8273                |                          | <b>DANGEROUS GOODS REGULATIONS, CODED</b><br>Code indicating the regulation, international or national, applicable for a means of transport.<br>IMD                      IMO IMDG code<br>Regulations regarding the transportation of dangerous goods on ocean-going vessels issued by the International Maritime Organization. | M an..3           |
| M | C205                |                          | <b>HAZARD CODE</b><br>The identification of the dangerous goods in code.  | M                 |
| M |                     | 8351                     | <b>Hazard code identification</b><br>Dangerous goods code.  | M an..7           |
|   |                     | 8078                     | <b>Hazard substance/item/page number</b><br>Number giving additional hazard code classification of a goods item within the applicable dangerous goods regulation.   | O an..7           |
|   |                     | 8092                     | <b>Hazard code version number</b><br>The version/revision number of date of issuance of the code used.  | O an..10          |
|   |                     |                          | Information in this element cannot be mapped to SE/BILLAD.  |                   |
| M | C234                |                          | <b>UNDG INFORMATION</b><br>Information on United Nations Dangerous Goods classification.  | M                 |
| M |                     | 7124                     | <b>UNDG number</b><br>Unique serial number assigned within the United Nations to substances and articles contained in a list of the dangerous goods most commonly carried.  | M n4              |
|   |                     | 7088                     | <b>Dangerous goods flashpoint</b><br>Lowest temperature, in the case of dangerous goods, at which vapour from an  | X an..8           |

|          |             |  |                 |
|----------|-------------|--|-----------------|
|          |             | inflammable liquid forms an ignitable mixture with air.  |                 |
|          | <b>C223</b> | <b>DANGEROUS GOODS SHIPMENT FLASHPOINT</b>   | <b>O</b>        |
|          |             | Temperature at which a vapor according to ISO 1523/73 can be ignited.  |                 |
| <b>M</b> | <b>7106</b> | <b>Shipment flashpoint</b>   | <b>M n3</b>     |
|          |             | Temperature in centigrade determined by the closed cup test as per ISO 1523/73 where a vapour is given off that can be ignited.  |                 |
|          |             | Flashpoint temperatures in this data element can only be stated to one decimal place, using an explicit decimal point (e.g. 3.4, -2.0). The minus sign and the decimal point are not counted in the length of the element. |                 |
| <b>M</b> | <b>6411</b> | <b>Measure unit qualifier</b>  | <b>M an..3</b>  |
|          |             | Indication of the unit of measurement in which weight (mass), capacity, length, area, volume or other quantity is expressed.   |                 |
|          |             | CEL Celsius  |                 |
|          | <b>8339</b> | <b>PACKING GROUP, CODED</b>  | <b>O an..3</b>  |
|          |             | Identification of a packing group by code.   |                 |
|          |             | Information in this element cannot be mapped to SE/BILLAD.   |                 |
|          |             | 1 Great danger   |                 |
|          |             | Packaging meeting criteria to pack hazardous materials with great danger. Group I according to IATA/IMDG/ADR/RID regulations.  |                 |
|          |             | 2 Medium danger  |                 |
|          |             | Packaging meeting criteria to pack hazardous materials with medium danger. Group II according to IATA/IDMG/ADR/RID regulations.  |                 |
|          |             | 3 Minor danger   |                 |
|          |             | Packaging meeting criteria to pack hazardous materials with minor danger. Group III according to IATA/IDMG/ADR/RID regulations.  |                 |
|          | <b>8364</b> | <b>EMS NUMBER</b>  | <b>O an..6</b>  |
|          |             | Emergency procedures for ships carrying dangerous goods.   |                 |
|          | <b>8410</b> | <b>MFAG</b>  | <b>O an..4</b>  |
|          |             | Medical first aid guide.   |                 |
|          | <b>8126</b> | <b>TREM CARD NUMBER</b>  | <b>X an..10</b> |
|          |             | The identification of a transport emergency card giving advice for emergency actions.  |                 |
|          | <b>C235</b> | <b>HAZARD IDENTIFICATION</b>   | <b>X</b>        |
|          |             | Identification of the Orange placard required on the means of transport.   |                 |
|          | <b>8158</b> | <b>Hazard identification number, upper part</b>  | <b>X an..4</b>  |
|          |             | The id. number for the Orange Placard (upper part) required on the means of transport.   |                 |
|          | <b>8186</b> | <b>Substance identification number, lower part</b>   | <b>X an4</b>    |
|          |             | The number for the Orange Placard (lower part) required on the means of transport.   |                 |
|          | <b>C236</b> | <b>DANGEROUS GOODS LABEL</b>   | <b>O</b>        |
|          |             | Markings identifying the type of hazardous goods and similar information.  |                 |
|          |             | Information in this element cannot be mapped to SE/BILLAD.   |                 |
| <b>M</b> | <b>8246</b> | <b>Dangerous goods label marking</b>   | <b>M an..4</b>  |

|             |  |   |                |
|-------------|--|---|----------------|
|             |  | Marking identifying the type of hazardous goods (substance),<br>Loading/Unloading instructions and advising actions in case of emergency.                     |                |
| <b>8246</b> | <b>Dangerous goods label marking</b>         |   | <b>O an..4</b> |
|             |  | Marking identifying the type of hazardous goods (substance),<br>Loading/Unloading instructions and advising actions in case of emergency.                     |                |
| <b>8246</b> | <b>Dangerous goods label marking</b>         |   | <b>O an..4</b> |
|             |  | Marking identifying the type of hazardous goods (substance),<br>Loading/Unloading instructions and advising actions in case of emergency.                     |                |
| <b>8255</b> | <b>PACKING INSTRUCTION, CODED</b>            |   | <b>X an..3</b> |
|             |  | Code defining the quantity and the type of package in which a product is<br>allowed to be shipped in a passenger or freight aircraft.                         |                |
| <b>8325</b> | <b>CATEGORY OF MEANS OF TRANSPORT, CODED</b> |   | <b>X an..3</b> |
|             |  | Identification of the type of means of transport determined to carry particular<br>goods, not necessarily being hazardous.                                    |                |
|             |  | Refer to D.97A Data Element Dictionary for acceptable code values.  |                |
| <b>8211</b> | <b>PERMISSION FOR TRANSPORT, CODED</b>       |   | <b>X an..3</b> |
|             |  | Code giving evidence that transportation of particular hazardous cargo is<br>permitted and identifies the restrictions being put upon a particular transport. |                |

**Segment:** **FTX** Free Text  
**Position:** 1490  
**Group:** Segment Group 32 (Dangerous Goods) Optional (Optional)  
**Level:** 3  
**Usage:** Optional (Optional)  
**Max Use:** 99  
**Purpose:** A segment to specify the dangerous goods technical name and to specify any additional dangerous goods information.

**Dependency Notes:**

**Semantic Notes:**

**Comments:**

**Notes:**

The proper shipping name/ technical name is indicated with qualifier AAD.

Example: FTX+AAD+++ANTIMONY TRICHLORIDE'

**Data Element Summary**

|   | <u>Data Element</u> | <u>Component Element</u> | <u>Name</u>   | <u>Attributes</u> |
|---|---------------------|--------------------------|---|-------------------|
| M | 4451                |                          | <b>TEXT SUBJECT QUALIFIER</b><br>Code specifying subject of a free text.<br>AAC Dangerous goods additional information<br>Additional information concerning dangerous goods.<br>AAD Dangerous goods, technical name<br>Proper shipping name, supplemented as necessary with the correct technical name, by which a dangerous substance or article may be correctly identified or which is sufficiently informative to permit identification by reference to generally available literature. | M an..3           |
|   | 4453                |                          | <b>TEXT FUNCTION, CODED</b><br>Code specifying how to handle the text.<br>Refer to D.97A Data Element Dictionary for acceptable code values.  | X an..3           |
|   | C107                |                          | <b>TEXT REFERENCE</b><br>Coded reference to a standard text and its source.<br>This data element is used if data element 4451 has the code value AAD.   | O                 |
| M |                     | 4441                     | <b>Free text identification</b><br>Free text in coded form.<br>P Marine Pollutant<br>PP Severe Marine Pollutant   | M an..17          |
|   |                     | 1131                     | <b>Code list qualifier</b><br>Identification of a code list.<br>Refer to D.97A Data Element Dictionary for acceptable code values.  | X an..3           |
|   |                     | 3055                     | <b>Code list responsible agency, coded</b><br>Code identifying the agency responsible for a code list.<br>Refer to D.97A Data Element Dictionary for acceptable code values.  | X an..3           |
|   | C108                |                          | <b>TEXT LITERAL</b>   | O                 |



|             |             |  |                 |
|-------------|-------------|--|-----------------|
| <b>M</b>    |             | Free text; one to five lines.                                    |                 |
|             | <b>4440</b> | <b>Free text</b>   | <b>M an..70</b> |
|             |             | Free text field available to the message sender for information. |                 |
|             | <b>4440</b> | <b>Free text</b>   | <b>O an..70</b> |
|             |             | Free text field available to the message sender for information. |                 |
|             | <b>4440</b> | <b>Free text</b>   | <b>O an..70</b> |
|             |             | Free text field available to the message sender for information. |                 |
|             | <b>4440</b> | <b>Free text</b>   | <b>O an..70</b> |
|             |             | Free text field available to the message sender for information. |                 |
|             | <b>4440</b> | <b>Free text</b>   | <b>O an..70</b> |
|             |             | Free text field available to the message sender for information. |                 |
| <b>3453</b> |             | <b>LANGUAGE, CODED</b>   | <b>X an..3</b>  |
|             |             | Code of language (ISO 639-1988).                                 |                 |

**Group:** **CTA** Segment Group 33: Contact Information  
**Position:** 1500  
**Group:** Segment Group 32 (Dangerous Goods) Optional (Optional)  
**Level:** 3  
**Usage:** Conditional (Optional)  
**Max Use:** 9  
**Purpose:** A group of segments to identify a contact to whom communication regarding the dangerous goods can be directed.

**Segment Summary**

|   | <b>Pos. No.</b> | <b>Seg. ID</b> | <b>Name</b>           | <b>Req. Des.</b> | <b>Max. Use</b> | <b>Group: Repeat</b> |
|---|-----------------|----------------|-----------------------|------------------|-----------------|----------------------|
| M | 1510            | CTA            | Contact Information   | M                | 1               |                      |
|   | 1520            | COM            | Communication Contact | C                | 9               |                      |

**Segment:** **CTA Contact Information**  
**Position:** 1510 (Trigger Segment)  
**Group:** Segment Group 33 (Contact Information)      Conditional (Optional)  
**Level:** 3  
**Usage:** Mandatory  
**Max Use:** 1  
**Purpose:** A segment to identify a person or department.

**Dependency Notes:**

**Semantic Notes:**

**Comments:**

**Notes:** If this segment is not provided at this level, the contact information of the shipper (CTA/COM) is taken as dangerous goods contact. This data is mandatory for INTTRA.

Example: CTA+HG+::CONTACT NAME'

**Data Element Summary**

|   | <u>Data Element</u> | <u>Component Element</u> | <u>Name</u>  | <u>Attributes</u> |
|---|---------------------|--------------------------|--|-------------------|
| M | 3139                |                          | <b>CONTACT FUNCTION, CODED</b><br>Code specifying the function of a contact (e.g. department or person).<br>HG                      Dangerous goods contact<br>Department/person to be contacted for details about the transportation of dangerous goods/hazardous material. | M an..3           |
| M | C056                |                          | <b>DEPARTMENT OR EMPLOYEE DETAILS</b><br>Code and/or name of a department or employee. Code preferred.   | M                 |
| X |                     | 3413                     | <b>Department or employee identification</b><br>Internal identification code.  | C an..17          |
|   |                     | 3412                     | <b>Department or employee</b><br>The department or person within an organizational entity.   | C an..35          |

**Segment:** **COM** **Communication Contact**  
**Position:** 1520  
**Group:** Segment Group 33 (Contact Information) Conditional (Optional)  
**Level:** 4  
**Usage:** Conditional (Optional)  
**Max Use:** 9  
**Purpose:** A segment to identify a communication number of a person or department.

**Dependency Notes:**

**Semantic Notes:**

**Comments:**

**Notes:**

This data is mandatory for INTTRA.

Example: COM+?+32323523651:TE'

**Data Element Summary**

| <b>Data Element</b> | <b>Component Element</b> | <b>Name</b>  | <b>Attributes</b> |
|---------------------|--------------------------|--|-------------------|
| M                   | C076                     | COMMUNICATION CONTACT  | M                 |
|                     |                          | Communication number of a department or employee in a specified channel. |                   |
| M                   | 3148                     | Communication number   | M an..512         |
|                     |                          | The communication number.  |                   |
|                     |                          | Emergency phone number.  |                   |
| M                   | 3155                     | Communication channel qualifier  | M an..3           |
|                     |                          | Code identifying the type of communication channel being used.           |                   |
|                     |                          | TE Telephone   |                   |
|                     |                          | Voice/data transmission by telephone.                                    |                   |

**Group:** **EQD** Segment Group 37: Equipment Details  
**Position:** 1610  
**Group:**  
**Level:** 1  
**Usage:** Optional (Dependent)  
**Max Use:** 999  
**Purpose:** A group of segments to specify equipment in which goods are transported.  
**Notes:** This group is mandatory for container shipments.

**Segment Summary**

|     | <u>Pos. No.</u> | <u>Seg. ID</u> | <u>Name</u>                        | <u>Req. Des.</u> | <u>Max. Use</u> | <u>Group: Repeat</u> |
|-----|-----------------|----------------|------------------------------------|------------------|-----------------|----------------------|
| M   | 1620            | EQD            | Equipment Details                  | M                | 1               |                      |
|     | 1640            | TMD            | Transport Movement Details         | O                | 1               |                      |
|     | 1650            | MEA            | Measurements                       | C                | 9               |                      |
| Rec | 1670            | SEL            | Seal Number                        | O                | 99              |                      |
|     | 1710            | FTX            | Free Text                          | O                | 9               |                      |
|     | 1790            |                | Segment Group 39: Name and Address | C                |                 | 9                    |

**Segment:** **EQD** **Equipment Details**  
**Position:** 1620 (Trigger Segment)  
**Group:** Segment Group 37 (Equipment Details)      Optional (Dependent)  
**Level:** 1  
**Usage:** Mandatory  
**Max Use:** 1  
**Purpose:** A segment to specify equipment, and equipment size and type used in the transport.

**Dependency Notes:**

**Semantic Notes:**

**Comments:**

**Notes:**

Container numbers must always be transmitted.  
 The use of the ISO code for size and type (data element 8155) is mandatory.  
 Example: EQD+CN+ABCU1234567+22G0:102:5'

**Data Element Summary**

| <b>Data Element</b> | <b>Component Element</b> | <b>Name</b>  | <b>Attributes</b> |
|---------------------|--------------------------|--|-------------------|
| M                   | 8053                     | <b>EQUIPMENT QUALIFIER</b><br>Code identifying type of equipment.<br>CN      Container   | M an..3           |
| M                   | C237                     | <b>EQUIPMENT IDENTIFICATION</b><br>Marks (letters and/or numbers) identifying equipment used for transport such as a container.  | M                 |
| M                   | 8260                     | <b>Equipment identification number</b><br>Marks (letters and/or numbers) which identify equipment e.g. unit load device.<br>Equipment numbers are to be transmitted as they appear on the equipment - as a contiguous field. | M an..17          |
| X                   | 1131                     | <b>Code list qualifier</b><br>Identification of a code list.<br>Refer to D.97A Data Element Dictionary for acceptable code values.   | X an..3           |
| X                   | 3055                     | <b>Code list responsible agency, coded</b><br>Code identifying the agency responsible for a code list.<br>Refer to D.97A Data Element Dictionary for acceptable code values.   | X an..3           |
| X                   | 3207                     | <b>Country, coded</b><br>Identification of the name of a country or other geographical entity as specified in ISO 3166.  | X an..3           |
| M                   | C224                     | <b>EQUIPMENT SIZE AND TYPE</b><br>Code and/or name identifying size and type of equipment used in transport.<br>Code preferred.  | M                 |
| M                   | 8155                     | <b>Equipment size and type identification</b><br>Coded description of the size and type of equipment e.g. unit load device.  | M an..10          |

Use of new ISO codes values for size/type is strongly recommended.

Refer to D.97A Data Element Dictionary for acceptable code values.

**1131 Code list qualifier** **O an..3**

Identification of a code list.

102 Size and type

**3055 Code list responsible agency, coded** **O an..3**

Code identifying the agency responsible for a code list.

5 ISO (International Organization for Standardization)

**8154 Equipment size and type** **O an..35**

Plain language description of the size and type of equipment e.g. unit load device.

This element is used for the Seagha size/type/height codes. The code consists of 6 characters : SSTTHH (s= size, t= type, h = height) : at least the first 4 characters are to be given for the size and type. The height is conditional and cannot be mapped to SE/BILLAD.

**8077 EQUIPMENT SUPPLIER, CODED** **O an..3**

To indicate the party that is the supplier of the equipment.

1 Shipper supplied

The transport equipment is supplied by the shipper.

2 Carrier supplied

The transport equipment is supplied by the carrier.

**8249 EQUIPMENT STATUS, CODED** **X an..3**

Indication of the action related to the equipment.

Refer to D.97A Data Element Dictionary for acceptable code values.

**8169 FULL/EMPTY INDICATOR, CODED** **X an..3**

To indicate the extent to which the equipment is full or empty.

Refer to D.97A Data Element Dictionary for acceptable code values.

**Segment:** **TMD** Transport Movement Details  
**Position:** 1640  
**Group:** Segment Group 37 (Equipment Details) Optional (Dependent)  
**Level:** 2  
**Usage:** Optional (Optional)  
**Max Use:** 1  
**Purpose:** A segment to specify transport movement details for the equipment.

**Dependency Notes:**

**Semantic Notes:**

**Comments:**

**Notes:** The values in the TMD segment are operational .

Example: TMD+2'

### Data Element Summary

| <u>Data Element</u> | <u>Component Element</u> | <u>Name</u>   | <u>Attributes</u> |
|---------------------|--------------------------|---|-------------------|
|                     |                          | <b>MOVEMENT TYPE</b>  | <b>O</b>          |
|                     |                          | Description of type of service for movement of cargo.   |                   |
| <b>M</b>            | <b>8335</b>              | <b>Movement type, coded</b>   | <b>M an..3</b>    |
|                     |                          | Code indicating the type of movement.   |                   |
|                     |                          | 2 LCL/LCL<br>Defines the movement of cargo packed in and unpacked from containers by the carrier on behalf of the shipper/consignee. 'LCL' means Less than Container Load.              |                   |
|                     |                          | 3 FCL/FCL<br>Defines the movement of cargo packed by the shipper or shipper's agent and unpacked by the consignee or consignee's agent. 'FCL' means Full Container Load.                |                   |
|                     |                          | 4 FCL/LCL<br>Defines the movement of cargo packed by the shipper or shipper's agent and unpacked by the carrier. 'FCL' means Full Container Load. 'LCL' means Less than Container Load. |                   |
|                     |                          | 5 LCL/FCL<br>Defines the movement of cargo packed by the carrier and unpacked by the consignee or consignee's agent. 'LCL' means Less than Container Load. 'FCL' means Full Load.       |                   |
|                     | <b>8334</b>              | <b>Movement type</b>  | <b>X an..35</b>   |
|                     |                          | Description of the type of movement.  |                   |
|                     | <b>8332</b>              | <b>EQUIPMENT PLAN</b>   | <b>O an..26</b>   |
|                     |                          | Description indicating equipment plan, e.g. FCL or LCL.   |                   |
|                     | <b>8341</b>              | <b>HAULAGE ARRANGEMENTS, CODED</b>  | <b>O an..3</b>    |
|                     |                          | Specification of the type of equipment haulage arrangements.  |                   |
|                     |                          | Carrier or merchant haulage.  |                   |
|                     |                          | 1 Carrier<br>Haulage arranged by carrier.   |                   |



2

Merchant

Haulage arranged by merchant (shipper, consignee, or their agent).

**Segment:** **MEA** Measurements  
**Position:** 1650  
**Group:** Segment Group 37 (Equipment Details) Optional (Dependent)  
**Level:** 2  
**Usage:** Conditional (Optional)  
**Max Use:** 9  
**Purpose:** A segment to specify measurements, other than dimensions, associated with the equipment, such as weight.

**Dependency Notes:**

**Semantic Notes:**

**Comments:**

**Notes:**

Container weights.

Export to Brazil (only INTTRA):

When Port of Discharge or Port of Load (0520LOC) is a Brazilian port, Container tare weight in kilograms must be provided.

**Data Element Summary**

|   | <u>Data Element</u> | <u>Component Element</u> | <u>Name</u>  | <u>Attributes</u> |
|---|---------------------|--------------------------|--|-------------------|
| M | 6311                |                          | <b>MEASUREMENT PURPOSE QUALIFIER</b><br>Specification of the purpose of the measurement.<br>AAE Measurement<br>[6314] Value of the measured unit.  | M an..3           |
|   | C502                |                          | <b>MEASUREMENT DETAILS</b><br>Identification of measurement type.  | C                 |
|   |                     | 6313                     | <b>Property measured, coded</b><br>Specification of the property measured.<br>ABJ Volume<br>The amount of air space taken up by the entity identified in the 6311 qualifier.<br>G Gross weight<br>[6292] Weight (mass) of goods including packing but excluding the carrier's equipment.<br>T Tare weight<br>Weight excluding goods and loose accessories. | C an..3           |
| X |                     | 6321                     | <b>Measurement significance, coded</b><br>Code specifying the significance of a measurement value.<br>Refer to D.97A Data Element Dictionary for acceptable code values.   | C an..3           |
| X |                     | 6155                     | <b>Measurement attribute identification</b><br>Code used to specify non-discrete measurement values.<br>Refer to D.97A Data Element Dictionary for acceptable code values.   | C an..17          |
| X |                     | 6154                     | <b>Measurement attribute</b><br>To specify non-discrete measurement values.  | C an..70          |
|   | C174                |                          | <b>VALUE/RANGE</b><br>Measurement value and relevant minimum and maximum tolerances in that  | C                 |

|          |             |  |                 |
|----------|-------------|--|-----------------|
|          |             | order.   |                 |
| <b>M</b> | <b>6411</b> | <b>Measure unit qualifier</b>  | <b>M an..3</b>  |
|          |             | Indication of the unit of measurement in which weight (mass), capacity, length, area, volume or other quantity is expressed.                     |                 |
|          |             | FTQ                      Cubic feet  |                 |
|          |             | KGM                      Kilograms   |                 |
|          |             | LBR                      Pounds  |                 |
|          |             | MTQ                      Cubic metres  |                 |
|          |             | MTR                      Metres  |                 |
|          | <b>6314</b> | <b>Measurement value</b>   | <b>C an..18</b> |
|          |             | Value of the measured unit.  |                 |
| <b>X</b> | <b>6162</b> | <b>Range minimum</b>   | <b>C n..18</b>  |
|          |             | Minimum of a range.  |                 |
| <b>X</b> | <b>6152</b> | <b>Range maximum</b>   | <b>C n..18</b>  |
|          |             | Maximum of a range.  |                 |
| <b>X</b> | <b>6432</b> | <b>Significant digits</b>  | <b>C n..2</b>   |
|          |             | To specify the number of significant digits.   |                 |
| <b>X</b> | <b>7383</b> | <b>SURFACE/LAYER INDICATOR, CODED</b>  | <b>C an..3</b>  |
|          |             | Code indicating the surface or layer of a product that is being described.<br>Refer to D.97A Data Element Dictionary for acceptable code values. |                 |

**Segment:** **SEL** Seal Number  
**Position:** 1670  
**Group:** Segment Group 37 (Equipment Details) Optional (Dependent)  
**Level:** 2  
**Usage:** Optional (Advised)  
**Max Use:** 99  
**Purpose:** A segment to identify seal and seal issuer associated with the equipment.

**Dependency Notes:**

**Semantic Notes:**

**Comments:**

**Notes:** The seal is recommended for US cargo.

Example: SEL+987654+SH'

### Data Element Summary

|   | <u>Data Element</u> | <u>Component Element</u> | <u>Name</u>  | <u>Attributes</u> |
|---|---------------------|--------------------------|--|-------------------|
| M | 9308                |                          | <b>SEAL NUMBER</b><br>The number of a custom seal or another seal affixed to the containers or other transport unit.   | <b>M an..10</b>   |
|   | C215                |                          | <b>SEAL ISSUER</b><br>Identification of the issuer of a seal on equipment either by code or by name.   | <b>O</b>          |
|   |                     | 9303                     | <b>Sealing party, coded</b><br>Identification of the issuer of the seal number.  | <b>O an..3</b>    |
|   |                     |                          | CA Carrier<br>Party undertaking or arranging transport of goods between named points.  |                   |
|   |                     |                          | CU Customs   |                   |
|   |                     |                          | QA Quarantine<br>Used for veterinary seal  |                   |
|   |                     |                          | SH Shipper<br>Party which, by contract with a carrier, consigns or sends goods with the carrier, or has them conveyed by him.  |                   |
|   |                     |                          | TO Terminal operator<br>Party which handles the loading and unloading of marine vessels.   |                   |
|   |                     | 1131                     | <b>Code list qualifier</b><br>Identification of a code list.<br>Refer to D.97A Data Element Dictionary for acceptable code values.   | <b>X an..3</b>    |
|   |                     | 3055                     | <b>Code list responsible agency, coded</b><br>Code identifying the agency responsible for a code list.<br>Refer to D.97A Data Element Dictionary for acceptable code values. | <b>X an..3</b>    |
|   |                     | 9302                     | <b>Sealing party</b><br>Clear text, representing the name of the issuer of the seal number.<br>Information in this element cannot be mapped to SE/BILLAD.                    | <b>O an..35</b>   |
|   | 4517                |                          | <b>SEAL CONDITION, CODED</b><br>To indicate the condition of a seal.   | <b>X an..3</b>    |

Refer to D.97A Data Element Dictionary for acceptable code values.

**Segment:** **FTX** Free Text  
**Position:** 1710  
**Group:** Segment Group 37 (Equipment Details) Optional (Dependent)  
**Level:** 2  
**Usage:** Optional (Optional)  
**Max Use:** 9  
**Purpose:** A segment to specify processable supplementary information associated with the equipment.

**Dependency Notes:**

**Semantic Notes:**

**Comments:**

**Notes:** INTTRA & GTNexus: in case of reefers this segment (qualifier AAI in 4451 - qualifier TMP in element 4441) is to be used to indicate temperatures. For non-active reefers, the temperature is 999.

Example: FTX+AAI++TMP+012:::CEL'

**Data Element Summary**

| <u>Data Element</u> | <u>Component Element</u> | <u>Name</u>  | <u>Attributes</u> |
|---------------------|--------------------------|--|-------------------|
| M                   | 4451                     | <b>TEXT SUBJECT QUALIFIER</b><br>Code specifying subject of a free text.<br>AAI General information<br>ACF Additional attribute information<br>The text refers to information about an additional attribute not otherwise specified. | M an..3           |
|                     | 4453                     | <b>TEXT FUNCTION, CODED</b><br>Code specifying how to handle the text.<br>Refer to D.97A Data Element Dictionary for acceptable code values.   | X an..3           |
|                     | C107                     | <b>TEXT REFERENCE</b><br>Coded reference to a standard text and its source.<br>This data element is used if data element 4451 contains the code ACF (construction material code).  | O                 |
| M                   | 4441                     | <b>Free text identification</b><br>Free text in coded form.<br>For temperatures, qualifier TMP is used.<br>AU Aluminium<br>PE Plastics reinforced<br>SU Steel unspecified<br>TMP Temperature   | M an..17          |
|                     | 1131                     | <b>Code list qualifier</b><br>Identification of a code list.<br>Refer to D.97A Data Element Dictionary for acceptable code values.   | X an..3           |
|                     | 3055                     | <b>Code list responsible agency, coded</b><br>Code identifying the agency responsible for a code list.<br>Refer to D.97A Data Element Dictionary for acceptable code values.   | X an..3           |

|          |             |  |                 |
|----------|-------------|--|-----------------|
|          | <b>C108</b> | <b>TEXT LITERAL</b>  | <b>O</b>        |
|          |             | Free text; one to five lines.  |                 |
|          |             | This data element is used if data element 4451 contains the value AAI. Only one line of free text can be mapped to SE/BILLAD.  |                 |
| <b>M</b> | <b>4440</b> | <b>Free text</b>   | <b>M an..70</b> |
|          |             | Free text field available to the message sender for information.   |                 |
|          |             | For INTTRA this is the fix temperature (no range possible). For GTNexus this is the minimum temperature.   |                 |
|          |             | Temperatures are always format n3. The minus sign and/or decimal point do not count in the total number of characters.   |                 |
|          | <b>4440</b> | <b>Free text</b>   | <b>O an..70</b> |
|          |             | Free text field available to the message sender for information.   |                 |
|          |             | Only to be used for GTNexus - the maximum temperature (optional). If this temperature is not provided, the first 4440 element is considered to be the fix temperature (minimum = maximum). |                 |
|          |             | Temperatures are always - format n3. The minus sign and/or decimal point do not count in the total number of characters.   |                 |
|          | <b>4440</b> | <b>Free text</b>   | <b>O an..70</b> |
|          |             | Free text field available to the message sender for information.   |                 |
|          |             | Temperature unit qualifier (optional).<br>CEL for Celsius<br>FAH for Fahrenheit (not possible with GTNexus)  |                 |
|          |             | Default if not provided = degrees Celsius.   |                 |
|          | <b>4440</b> | <b>Free text</b>   | <b>O an..70</b> |
|          |             | Free text field available to the message sender for information.   |                 |
|          | <b>4440</b> | <b>Free text</b>   | <b>O an..70</b> |
|          |             | Free text field available to the message sender for information.   |                 |
| <b>X</b> | <b>3453</b> | <b>LANGUAGE, CODED</b>   | <b>X an..3</b>  |
|          |             | Code of language (ISO 639-1988).   |                 |

**Group:** **NAD** Segment Group 39: Name and Address  
**Position:** 1790  
**Group:** Segment Group 37 (Equipment Details) Optional (Dependent)  
**Level:** 2  
**Usage:** Conditional (Optional)  
**Max Use:** 9  
**Purpose:** A group of segments to identify different equipment pick-up or drop-off places.

**Segment Summary**

|   | <u>Pos.</u><br><u>No.</u> | <u>Seg.</u><br><u>ID</u> | <u>Name</u>      | <u>Req.</u><br><u>Des.</u> | <u>Max.</u><br><u>Use</u> | <u>Group:</u><br><u>Repeat</u> |
|---|---------------------------|--------------------------|------------------|----------------------------|---------------------------|--------------------------------|
| M | 1800                      | NAD                      | Name and Address | M                          | 1                         |                                |



**Segment:** **NAD** Name and Address  
**Position:** 1800 (Trigger Segment)  
**Group:** Segment Group 39 (Name and Address) Conditional (Optional)  
**Level:** 2  
**Usage:** Mandatory  
**Max Use:** 1  
**Purpose:** A segment to specify a pick-up or drop-off address.

**Dependency Notes:**

**Semantic Notes:**

**Comments:**

**Notes:**

Only 1 Stuffing Locations (NAD+CS) is allowed per EQD group (only INTTRA).

For export to US (only INTTRA):

When Port of Discharge (0520LOC) is a US port, it is recommended that Stuffing Location be provided (when applicable).

#### Data Element Summary

|   | <u>Data Element</u> | <u>Component Element</u> | <u>Name</u>   | <u>Attributes</u> |
|---|---------------------|--------------------------|---|-------------------|
| M | 3035                |                          | <b>PARTY QUALIFIER</b><br>Code giving specific meaning to a party.<br>CS Consolidator<br>Party consolidating various consignments, payments etc.  | M an..3           |
|   | C082                |                          | <b>PARTY IDENTIFICATION DETAILS</b><br>Identification of a transaction party by code.   | C                 |
| M |                     | 3039                     | <b>Party id. identification</b><br>Code identifying a party involved in a transaction.<br>UN/LOCODE or customer specific.   | M an..35          |
|   |                     | 1131                     | <b>Code list qualifier</b><br>Identification of a code list.<br>263 Packing or unpacking facility   | C an..3           |
|   |                     | 3055                     | <b>Code list responsible agency, coded</b><br>Code identifying the agency responsible for a code list.<br>Assigned by customer, but must be known by the receiver (e.g. INTTRA or carrier).<br>6 UN/ECE (United Nations - Economic Commission for Europe)<br>Used in case of UN/LOCODE.<br>86 Assigned by party originating the message<br>Codes assigned by the party originating the message. | C an..3           |
| X | C058                |                          | <b>NAME AND ADDRESS</b><br>Unstructured name and address: one to five lines.  | C                 |
| X |                     | 3124                     | <b>Name and address line</b><br>Free form name and address description.   | M an..35          |
| X |                     | 3124                     | <b>Name and address line</b><br>Free form name and address description.   | C an..35          |

|   |             |             |   |   |        |
|---|-------------|-------------|---|---|--------|
| X |             | <b>3124</b> | <b>Name and address line</b><br>Free form name and address description.   | C | an..35 |
| X |             | <b>3124</b> | <b>Name and address line</b><br>Free form name and address description.   | C | an..35 |
| X |             | <b>3124</b> | <b>Name and address line</b><br>Free form name and address description.   | C | an..35 |
| X | <b>C080</b> |             | <b>PARTY NAME</b><br>Identification of a transaction party by name, one to five lines. Party name may be formatted.   | C |        |
| X |             | <b>3036</b> | <b>Party name</b><br>Name of a party involved in a transaction.   | M | an..35 |
| X |             | <b>3036</b> | <b>Party name</b><br>Name of a party involved in a transaction.   | C | an..35 |
| X |             | <b>3036</b> | <b>Party name</b><br>Name of a party involved in a transaction.   | C | an..35 |
| X |             | <b>3036</b> | <b>Party name</b><br>Name of a party involved in a transaction.   | C | an..35 |
| X |             | <b>3036</b> | <b>Party name</b><br>Name of a party involved in a transaction.   | C | an..35 |
| X |             | <b>3045</b> | <b>Party name format, coded</b><br>Specification of the representation of a party name.<br>Refer to D.97A Data Element Dictionary for acceptable code values. | C | an..3  |
| X | <b>C059</b> |             | <b>STREET</b><br>Street address and/or PO Box number in a structured address: one to three lines.   | C |        |
| X |             | <b>3042</b> | <b>Street and number/p.o. box</b><br>Street and number in plain language, or Post Office Box No.  | M | an..35 |
| X |             | <b>3042</b> | <b>Street and number/p.o. box</b><br>Street and number in plain language, or Post Office Box No.  | C | an..35 |
| X |             | <b>3042</b> | <b>Street and number/p.o. box</b><br>Street and number in plain language, or Post Office Box No.  | C | an..35 |
| X |             | <b>3042</b> | <b>Street and number/p.o. box</b><br>Street and number in plain language, or Post Office Box No.  | C | an..35 |
| X | <b>3164</b> |             | <b>CITY NAME</b><br>Name of a city (a town, a village) for addressing purposes.   | C | an..35 |
| X | <b>3229</b> |             | <b>COUNTRY SUB-ENTITY IDENTIFICATION</b><br>Identification of the name of sub-entities (state, province) defined by appropriate governmental agencies.        | C | an..9  |
| X | <b>3251</b> |             | <b>POSTCODE IDENTIFICATION</b><br>Code defining postal zones or addresses.  | C | an..9  |
|   | <b>3207</b> |             | <b>COUNTRY, CODED</b><br>Identification of the name of a country or other geographical entity as specified in ISO 3166.<br>ISO 2-character country code       | C | an..3  |

**Segment:** **UNT** Message Trailer  
**Position:** 1880  
**Group:**  
**Level:** 0  
**Usage:** Mandatory  
**Max Use:** 1  
**Purpose:** A service segment ending a message, giving the total number of segments in the message and the control reference number of the message.

**Dependency Notes:**

**Semantic Notes:**

**Comments:**

**Notes:** Example: UNT+45+24680'

**Data Element Summary**

|   | <u>Data Element</u> | <u>Component Element</u> | <u>Name</u>   | <u>Attributes</u> |
|---|---------------------|--------------------------|---|-------------------|
| M | 0074                |                          | <b>NUMBER OF SEGMENTS IN A MESSAGE</b><br>Control count of number of segments in a message. | M n..6            |
| M | 0062                |                          | <b>MESSAGE REFERENCE NUMBER</b><br>Unique message reference assigned by the sender.         | M an..14          |

## 4 Examples

### 4.1 Example 1: Levels of packaging

The message only allows horizontal structuring. This means that all hierarchies of packaging are in one GID segment.

Up to three levels of packaging can be used: outer, intermediate and inner packaging. They are referenced in the first three repetitions of the composite data element C213 in the GID-segment. For each level of packaging the number of packages (mandatory), the type of package identification (using the codes of UN/Recommendation 21) and the type of packages (free text) can be indicated.

The following is an example of this:

GID+1+1:BG:3::BAG+80:BX:2::BOX'

FTX+AAA+++PRODUCT A'

MEA+MEA+G+KGM:36000'

The GID group consists of one bag which contains 80 boxes. The lowest packaging level is a box.

The disadvantage of this is that it is not possible to relate content or weight to the packing concerned. This means that the content or weight always relates to the outer packaging.

## 4.2 Example 2

The following is an example of an instruction for a bill of lading. The message is sent on the 26th of February 2003. The sender requests the receiver to use the AGHA layout number 2 while printing the B/L.

The port of loading is Antwerp and the port of discharge is Singapore. The bill of lading is 'to order'. Therefore a notify party is mentioned.

The shipment consists of 25 bins. 22 bins are in one container, 3 bins in a second one.

|   |  |
|---|--|
| UNH+000866+IFTMIN:D:97A:UN:SEA13+SEAGHA72193' | Message header   |
| BGM+705+SEAGHA7219800+9'                      | Message number SEAGHA7219800. 9 says that is an original message (no replace or delete). |
| TSR+27+2:::2'                                 | Movement type is door-door, service type FCL – FCL.                                      |
| DTM+137:20030226:102'                         | Message date is 26th February 2003.  |
| FTX+SIN++2'                                   | Layout number 2 is selected.   |
| FTX+DOC++N'                                   | No attached sheet required   |
| FTX+BLC+++SHIPPER?'s LOAD AND COUNT'          | B/L clauses  |
| FTX+AAI+++INSTRUCTIONS FOR THE CARRIER'       | Instructions carrier   |
| CNT+7:380.04:KGM'                             | The total gross weight of the consignment is 380.04 Kilogram.                            |
| CNT+11:25'                                    | The total number of packages is 25.  |
| CNT+15:50:MTQ'                                | The total volume is 50 cubic metre.  |

|  |  |
|--|--|
| CNT+29:300.96:KGM'   | The total net weight of the consignment is 380.04 Kilogram.  |
| DOC+705+:26++6+3'  | Bill of lading - 3 originals and 6 copies required, document not freighted (26)                      |
| LOC+57+BEANR:139:6:ANTWERP'  | The place of payment (basic freight – see CPI) is Antwerp.   |
| LOC+91+BEANR:139:6:ANTWERP'  | The place of document issue is Antwerp.  |
| RFF+FF:223/256587'   | Freight forwarder's reference.   |
| DTM+95:20030227:102'   | The date of issue of the bill of lading should be 27 <sup>th</sup> February 2003.                    |
| RFF+BN:ANRE12655'  | The booking reference is ANRE12655   |
| CPI+4++P'  | Basic freight is prepaid.  |
| TDT+20+254E+1+13++++:::M/S SEAGHA'                                 | The voyage number is 254E and the vessel name is M/S SEAGHA. 1 indicates that this is sea transport. |
| LOC+9+BEANR:139:6:ANTWERP'   | The port of loading is Antwerp.  |
| LOC+11+SGSCT:139:6:SINGAPORE'                                      | The port of discharge is Singapore.  |
| LOC+88+NLRTU:139:6:ROTTERDAM'                                      | The place of receipt is Rotterdam.   |
| LOC+7+SGCHG:139:6:CHANGI'  | The place of delivery is Changi  |
| NAD+CG+P&ONED'   | The shipping agent is P&O Nedlloyd   |
| NAD+CZ++PORTHUS:BROUWERSVLIET<br>33/8:2000 ANTWERPEN:BE'           | The consignor is Seagha  |
| NAD+CN++TO ORDER'  | The bill of lading is TO ORDER.  |
| NAD+N1++PORTHUSSINGAPORE:STREET<br>X:SINGAPORE: FAX: 023-22656889' | The notify party is PORTHUSSINGAPORE.  |
| GID+1+25:BI:3::BIN'  | The consignment consists of 25 Bins.   |
| FTX+AAA++BOORZUURWARER'  | Description of the goods.  |
| MEA+AAE+G+KGM:380.04'  | The gross weight of all the 25 Bins is 380.04 KGM.   |
| MEA+AAE+AAL+KGM:300.96'  | The net weight of all the 25 Bins is 300.96 KGM.   |
| MEA+AAE+ABJ+MTQ:50'  | The volume of all the 25 Bins is 50 cubic metre.   |
| PCI+24+ABC/1233'   | Marks & numbers of the bins.   |

|                                 |  |
|---------------------------------|--|
| SGP+CRXU2145657+3'              | 3 bins are in container CRXU2145657                          |
| MEA+AAE+G+KGM:56.72'            | The gross weight of the 3 bins is 56.72.                     |
| MEA+AAE+ABJ+MTQ:8'              | The volume of the 3 bins is 8 cubic metre.                   |
| SGP+LOGU3526124+22'             | 22 bins are in container LOGU3526124                         |
| MEA+AAE+G+KGM:323.32'           | The gross weight of the 22 bins is 323.32 KGM                |
| MEA+AAE+ABJ+MTQ:42'             | The volume of the 22 bins is 42 cubic metre.                 |
| DGS+IMD+9:4+3082'               | The UN number is 3085, IMDG class 9, subclass 4              |
| FTX+AAD+++PROPER SHIPPING NAME' | The proper shipping name of the goods.                       |
| CTA+HG+:TESTER'                 | Emergency contact.   |
| COM+03-2357702:TE'              | Emergency telephone number.                                  |
| EQD+CN+CRXU2145657+42GP:105:5'  | The first container is a general purpose 40 foot container.  |
| TMD+3+FCL/FCL'                  | Indication FCL/FCL.  |
| SEL+251235'                     | Seal number 251235.  |
| EQD+CN+LOGU3526124+22GP:102:5'  | The second container is a general purpose 20 feet container. |
| TMD+3+FCL/FCL'                  | Indication FCL/FCL.  |
| SEL+256365'                     | Seal number 256365.  |

Here is an example of a possible print-out:

| <b>ORIGINAL BILL OF LADING</b>  |   |  |
|---|---|--|
| <b>Logo Carrier</b>   |   |  |
| <b>Shipper</b><br><br>PORTHUS<br>BROUWERSVLIET 33/8:2000<br>ANTWERPEN BE                    | <b>Bill of Lading No</b>                  |  |
|   | <b>Booking No</b><br><br>ANRE12655        |  |
|   | <b>Contract Number</b>                    |  |
| <b>Consignee</b><br><br>TO ORDER  | <b>Forwarding Agent</b><br><br>223/256587 |  |
| <b>Notify address</b><br><br>PORTHUSSINGAPORE<br>STREET X<br>SINGAPORE<br>FAX: 023-22656889 | <b>Pre-carriage by</b>                    |  |
| <b>Ocean Vessel</b><br><br>M/S PORTHUS  | <b>Voy. No</b><br><br>254E                | <b>Place of Receipt (if pre-carriage)</b><br><br>ROTTERDAM |

| <b>Port of Loading</b>                        |                           | <b>Place of Delivery (if on-carriage)</b>   |                     |                    |
|---|---------------------------|---|---------------------|--------------------|
| ANTWERP                                       |                           | CHANGI  |                     |                    |
| <b>Port of Discharge</b>                      |                           |   |                     |                    |
| SINGAPORE                                     |                           |   |                     |                    |
| <b>PARTICULARS FURNISHED BY SHIPPER</b>       |                           |   |                     |                    |
| <b>Marks and Nos, Container Nos, Seal Nos</b> | <b>Number of packages</b> | <b>Description of goods</b>   | <b>Gross weight</b> | <b>Measurement</b> |
| CRXU2145657<br>SEAL: 251235                   | 1                         | 40' CONTAINER   | 56.72 KGM           | 8.0000 CBM         |
| ABC/1233                                      |                           | SAID TO CONTAIN:<br>3 BINS<br><br>BOORZUURWATER<br>UN 3082, CLASS 9<br>PROPER SHIPPING NAME |                     |                    |
| LOGU3526124<br>SEAL : 256365                  | 1                         | 20' CONTAINER   | 323.32 KGM          | 42.0000 CBM        |
| ABC/1233                                      |                           | SAID TO CONTAIN:<br>22 BINS   |                     |                    |



BOORZUURWATER  
UN 3082, CLASS 9  
PROPER SHIPPING NAME

2

380.04 KGM    50.0000 CBM

SHIPPER'S LOAD AND COUNT

|                                    |   |                |   |
|------------------------------------|---|----------------|---|
| <b>Shippers declared value</b>     | <b>Total No. of containers/packages received by the Carrier</b> |                | <b>Movement</b>                         |
|                                    | 2   |                | FCL/FCL                                 |
| <b>Freight charges and</b>         | <b>Prepaid</b>  | <b>Collect</b> | <b>Currency</b>                         |
| <b>All charges</b>                 |   |                | <b>Freight payable at/by</b>            |
| <b>Basic freight</b>               | XXXXX   |                | ANTWERP                                 |
| <b>Destination haulage charges</b> |   |                | <b>Place and date of issue</b>          |
| <b>Destination port charges</b>    |   |                | ANTWERP                      27.02.2003 |
| <b>Origin port charges</b>         |   |                | <b>Number of original Bs/L</b>          |
| <b>Origin haulage charges</b>      |   |                | 3                                       |
|                                    |   |                | <b>For the carrier</b>                  |
|                                    |   |                | <b>as agents only</b>                   |